



FOSDEM

Infrastructure Review

Richard “RichiH” Hartmann - Sebastian Schubert

2024

Core Infra

- Cisco ASR 1006 for routing, ACLs, NAT64, DHCP
- Handful Cisco C3750 Switches
- 3 Arista 7050 Switches **NEW**
- Two very old servers for all other Services
- Three additional servers for running Proxmox Cluster **NEW**
- All Monitoring done via Prometheus, Loki, and Grafana
- Data for Public Dashboards sent and persistet to VM outside ULB



Video

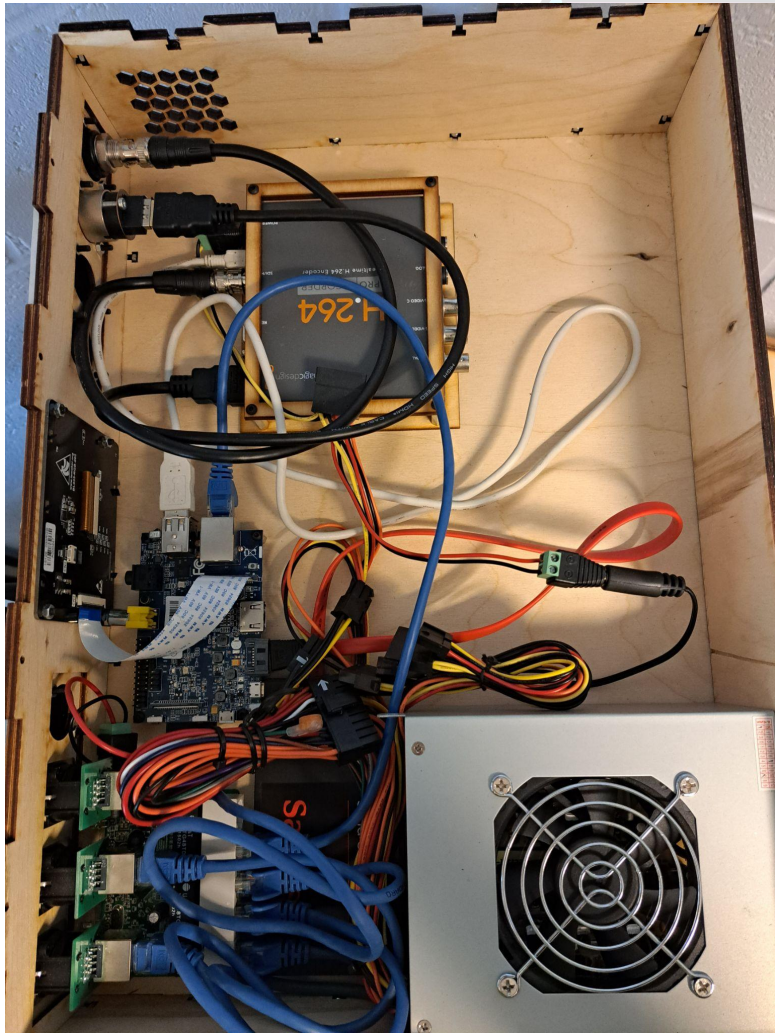
Capturing with our video boxes

See <https://github.com/FOSDEM/video> for details

Send streams to render farm

Send streams off-site for livestreaming and cutting into finished videos

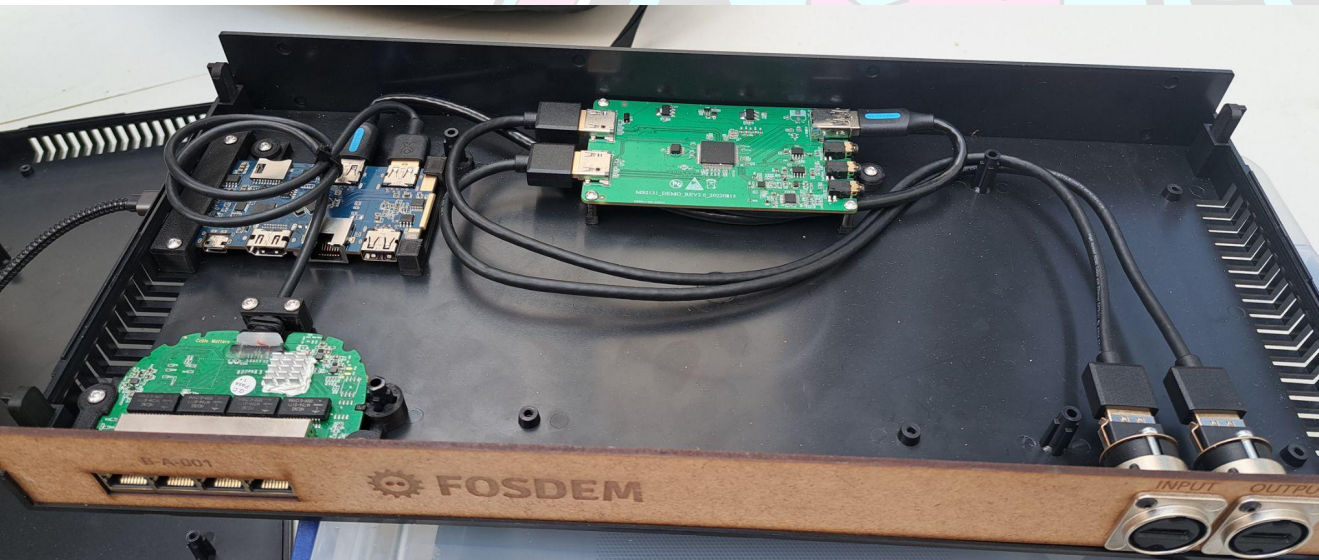
Semi-automated review and cutting process via <https://github.com/yoe/sreview>



Video Boxes



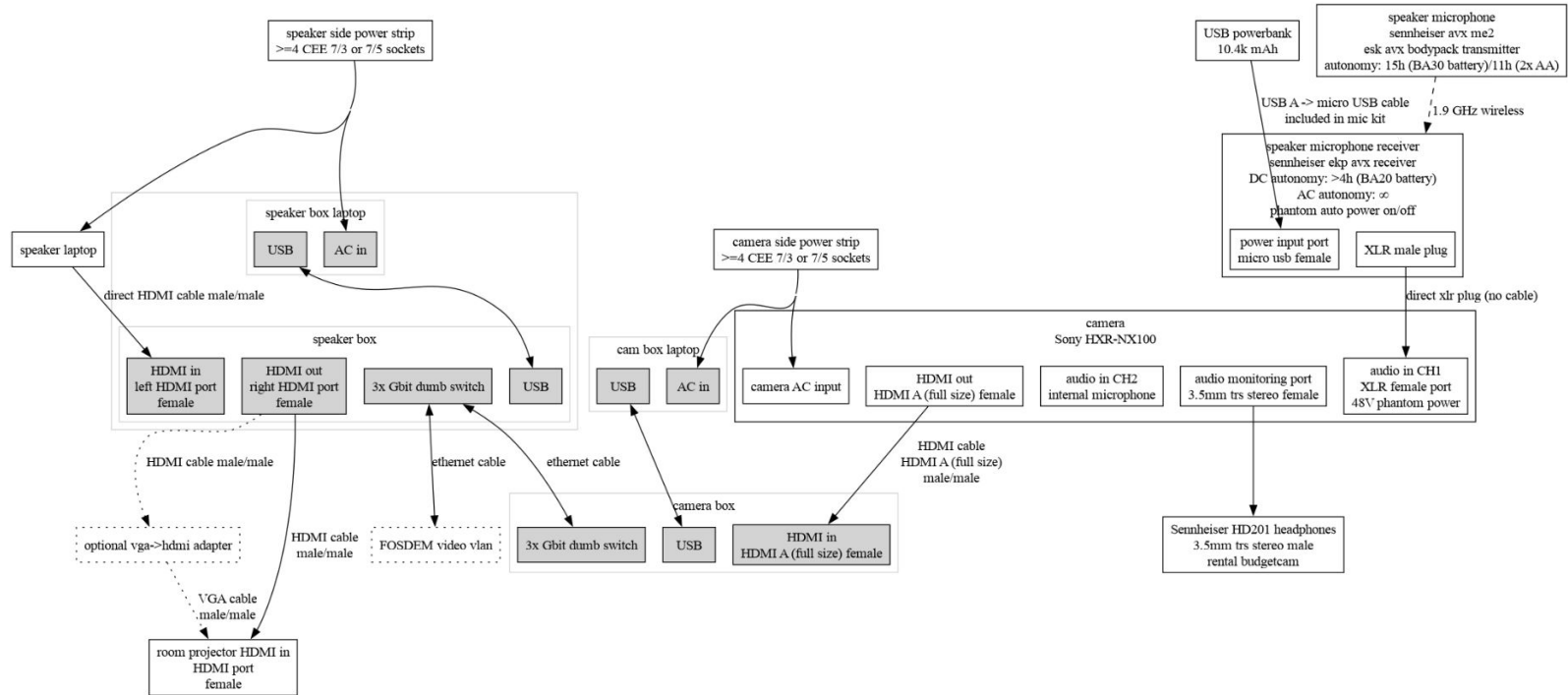
First Version of the new Boxes



Final Videobox



Example Cabling for a room



FOSDEM 2024 12 small rooms video cabling setup:

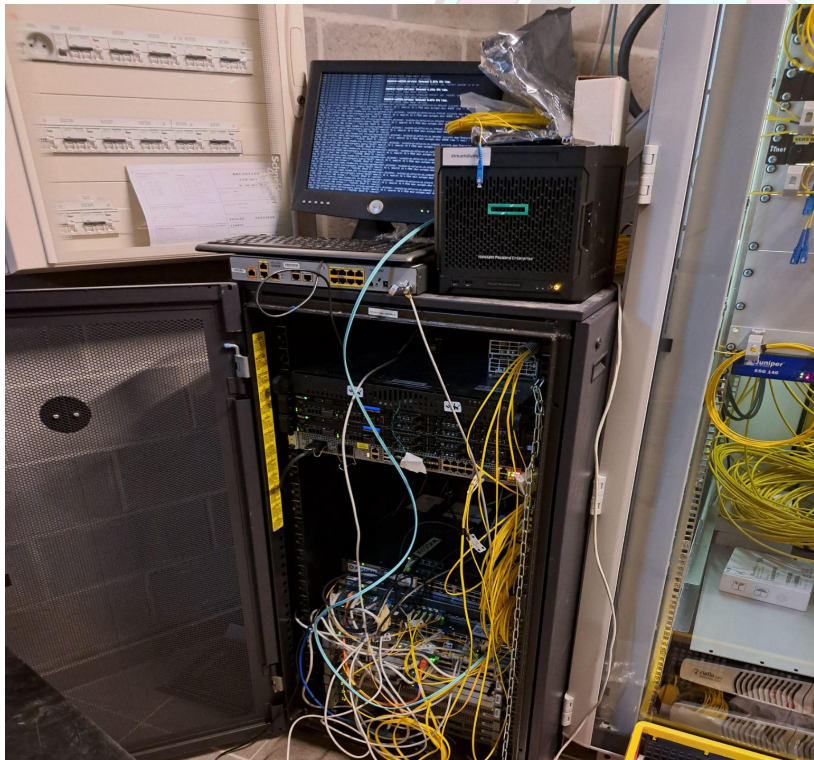
aw1120, aw1121, aw1125, aw1126, h2213, h2214, k3201, k3401, k4201, k4401, k4601, ud2119



Buildings: All aw h j k ua ub ud

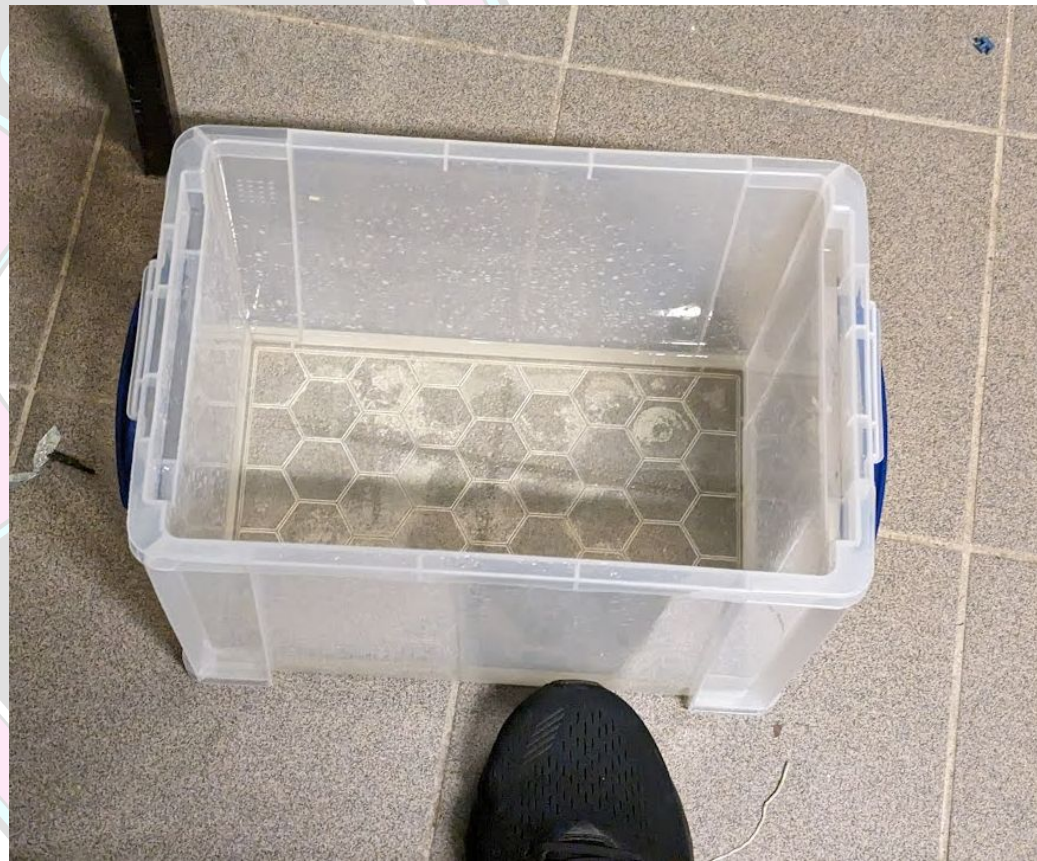
h1301	h1302	h1308	h1309	h2213	h2214	h2215	k1105	k3201	k3401	k4201	k4401
k4601	ua2114	ua2118	ua2220	ub2147	ub2252a	ub4132	ub5132	ub5230	ud2120	ud2208	ud2218a

Render Farm 2023 Edition



Render Farm 2024 Edition









Timelines

Installation of router

2016: Friday

2017: December

2018: December

2019: December

2020: December

2023: January

2024: January 24th (new 10g uplink)

Network up and Running

2015: Saturday 5:00

2016: Friday 19:00

2017: Friday 17:00

2018: Friday 12:00

2019: Thursday, last hiccups fixed Fri. 19:00

2020: Friday 18:00

2023: Friday 20:20

2024: Friday ~14:30



Timelines

Monitoring

2016: Saturday 12:00

2017: Saturday 09:00

2018: January

2019: January

2020: January (2019!)

2023: January 13th , kept it running ...

2024: Immediate ;)

Video

2016: Saturday 11:30

2017: Saturday 09:30

2018: Saturday 08:30

2019: Friday 21:00

2020: Friday 19:00

2023: Friday ~22:00

2024: Friday 23:00

Redoing our setup for 2024

Plan was made to replace the old servers with a cluster onsite

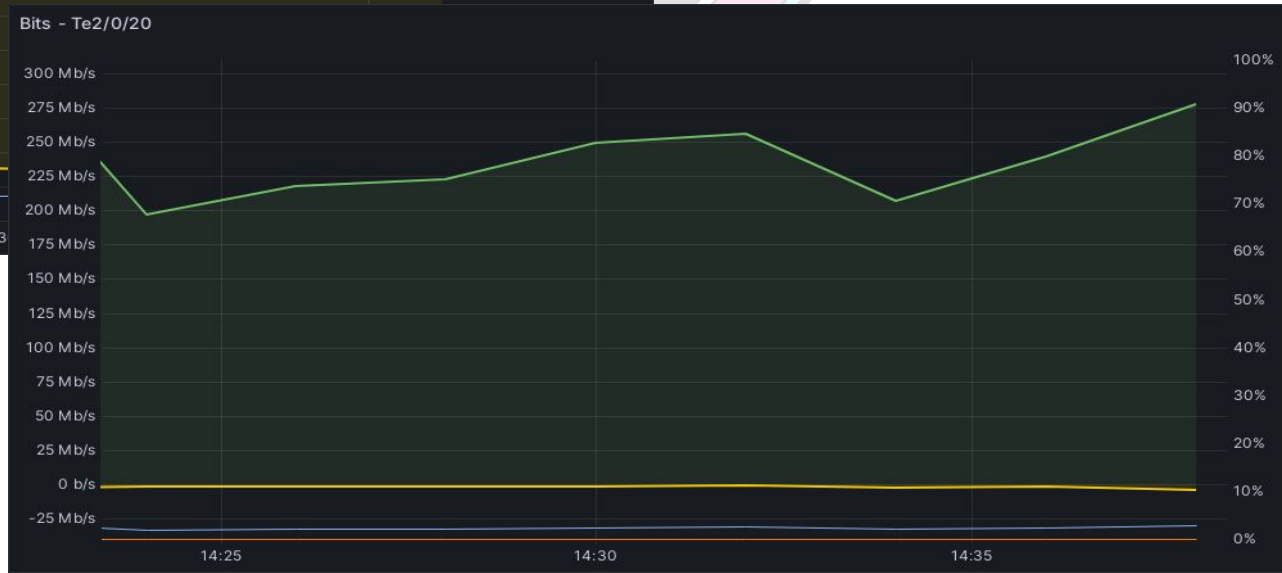
Migration away from the servers still ongoing, first VMs running and giving you DNS64 and providing monitoring

With the new cluster we also needed more bandwidth for Software Defined Storage

Replaced the old stacked switches with 2 “new” switches (Builddate: 2012-07-25) that now do MLAG - got rid of Spanning tree in the setup

Uplinks

colt



dstiny

Clone our Conference

- Clone our Infrastructure: <https://github.com/FOSDEM/infrastructure>





Q & A

FOSDEM

2024