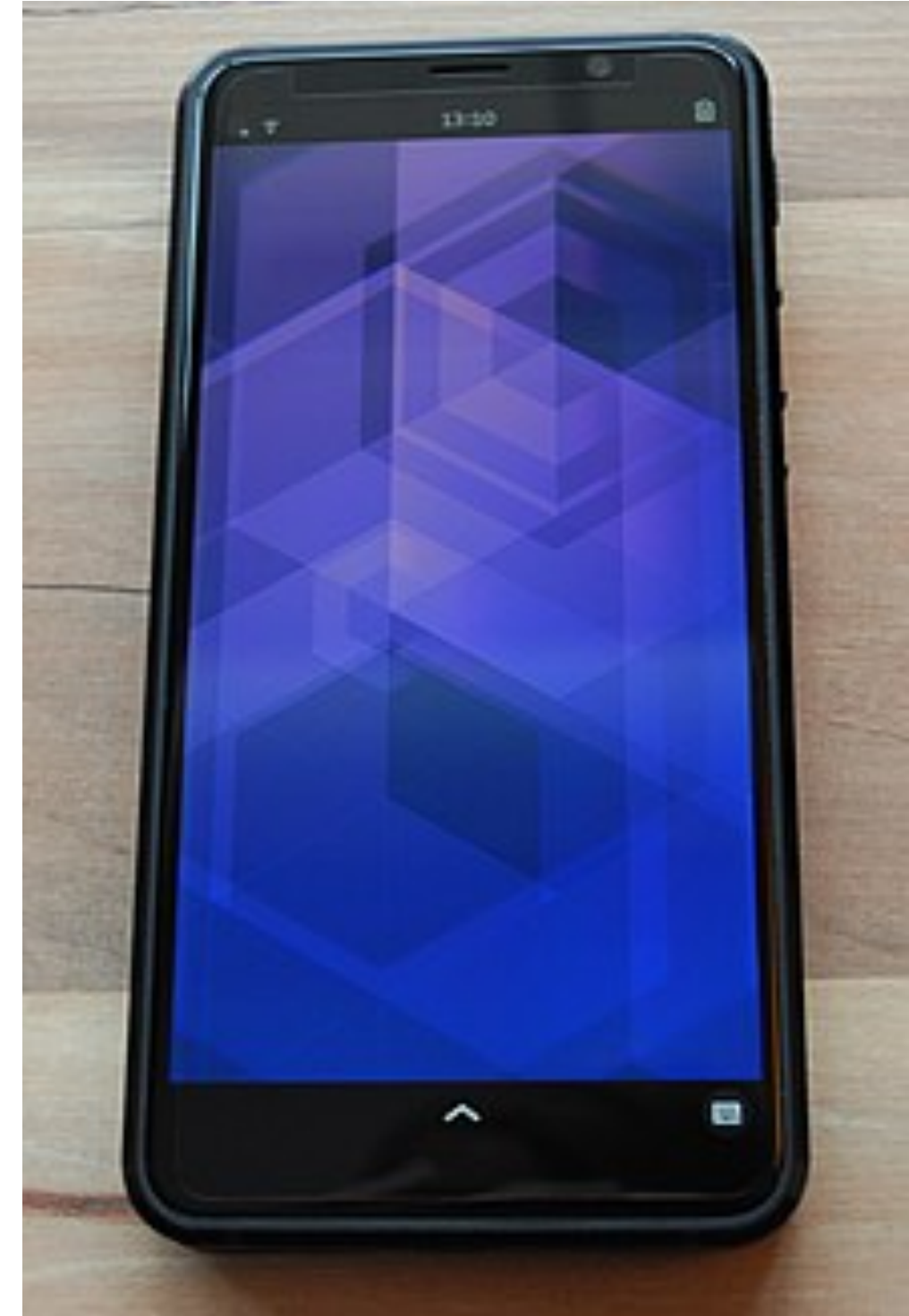


Wayland input method is *broken*
and it's my fault

Wayland input method is *broken*
and it's my fault

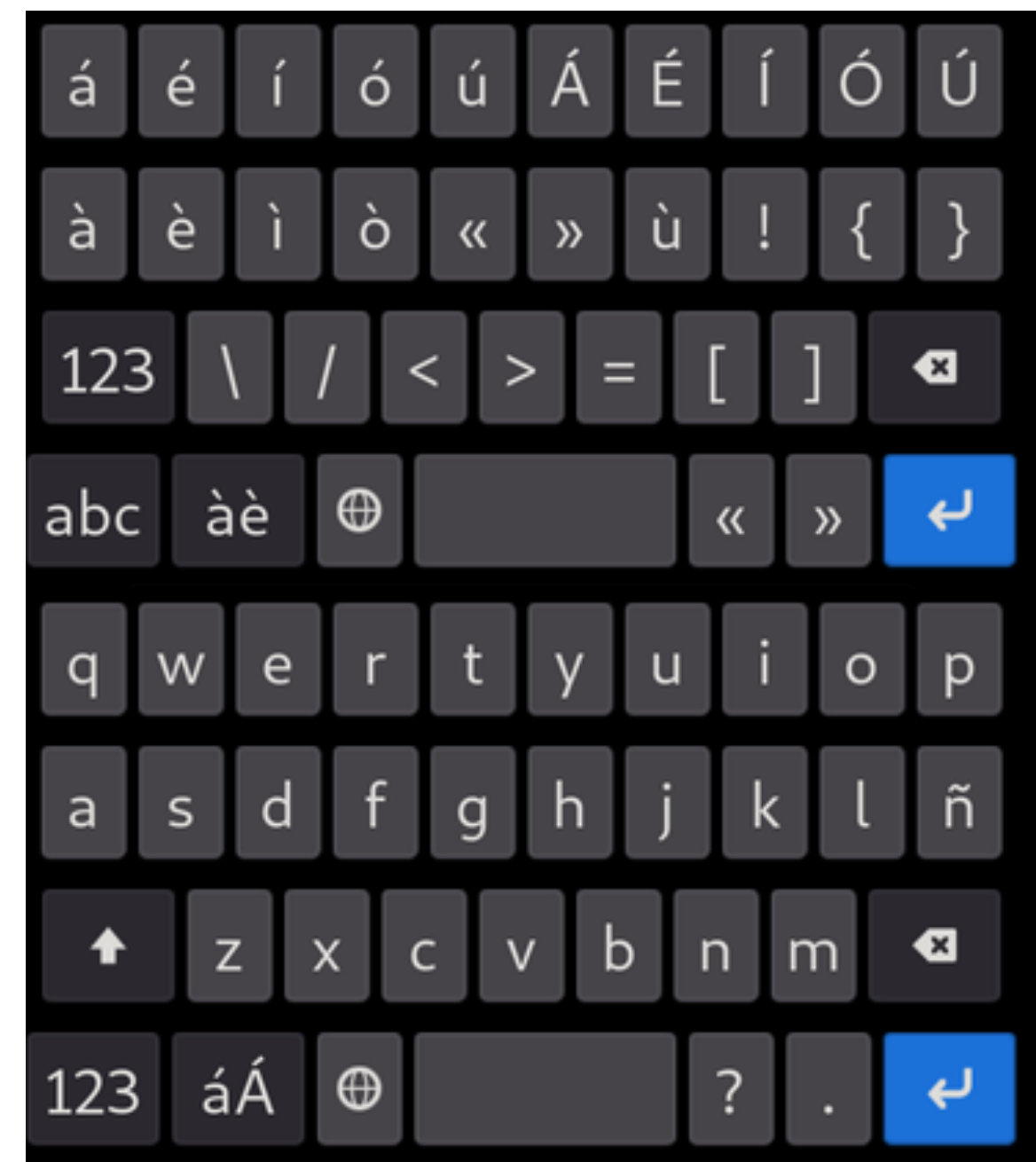
Dorota Czaplejewicz

Librem 5

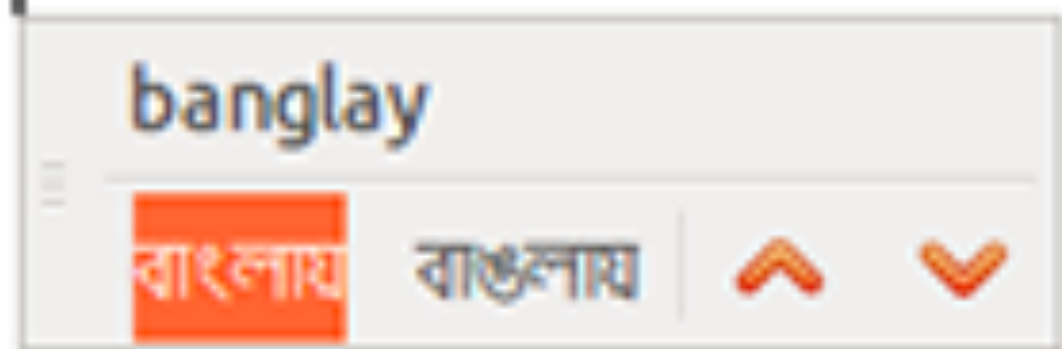




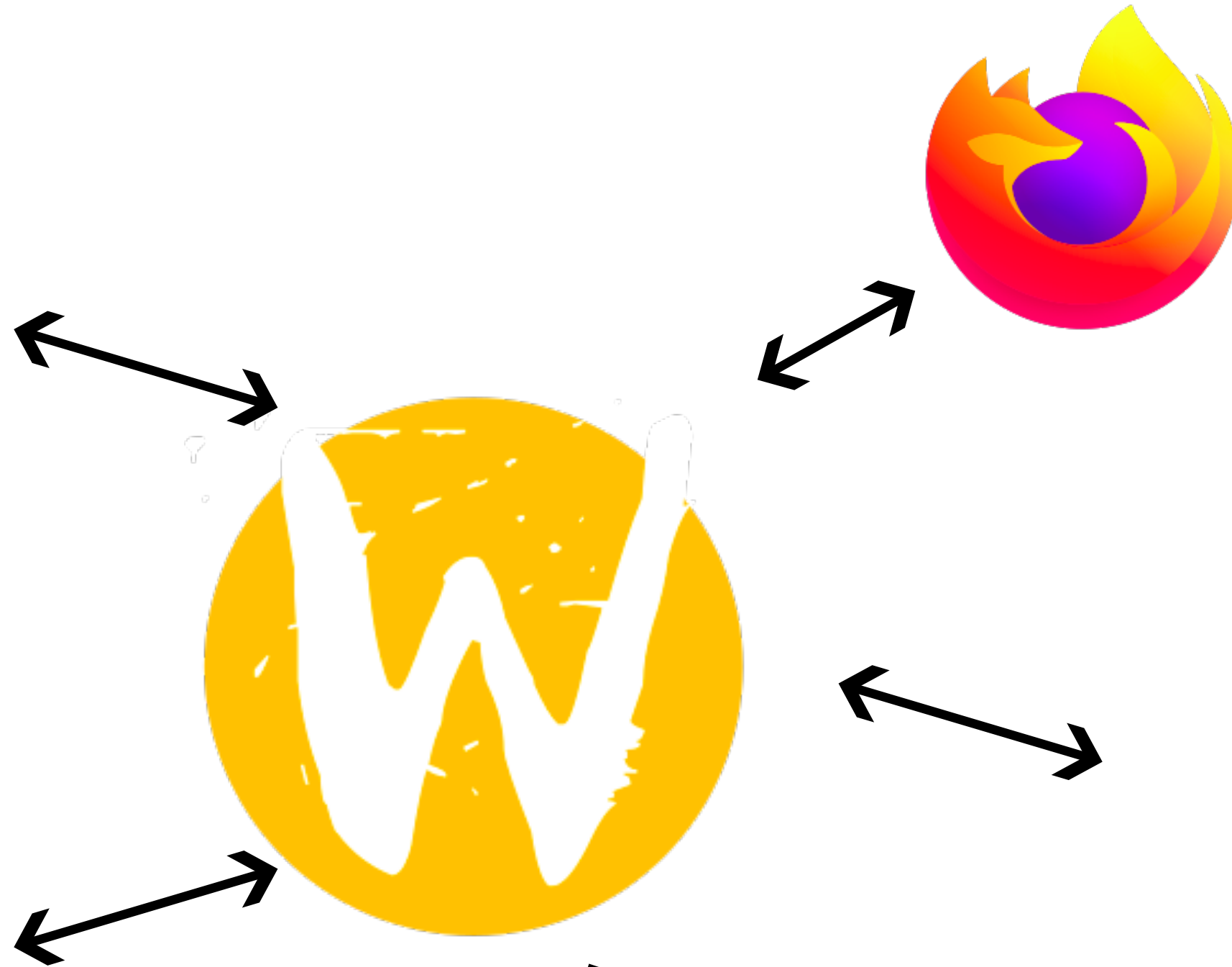
Input
method

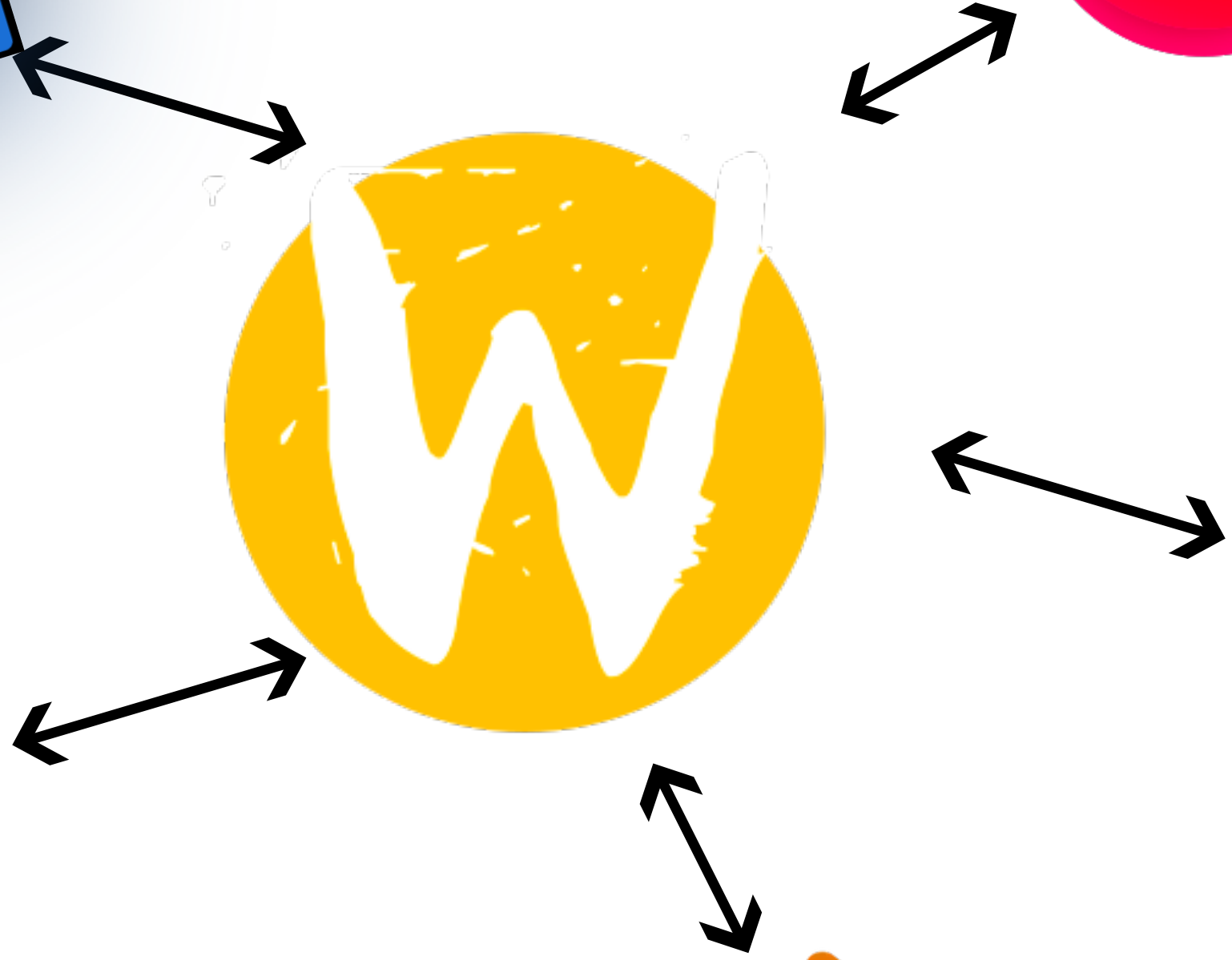


আমি বাংলায়











zwp_input_method_unstable_v1

zwp_text_input_unstable_v2



zwp_input_method_unstable_v1

zwp_input_method_unstable_v2

zwp_text_input_unstable_v2

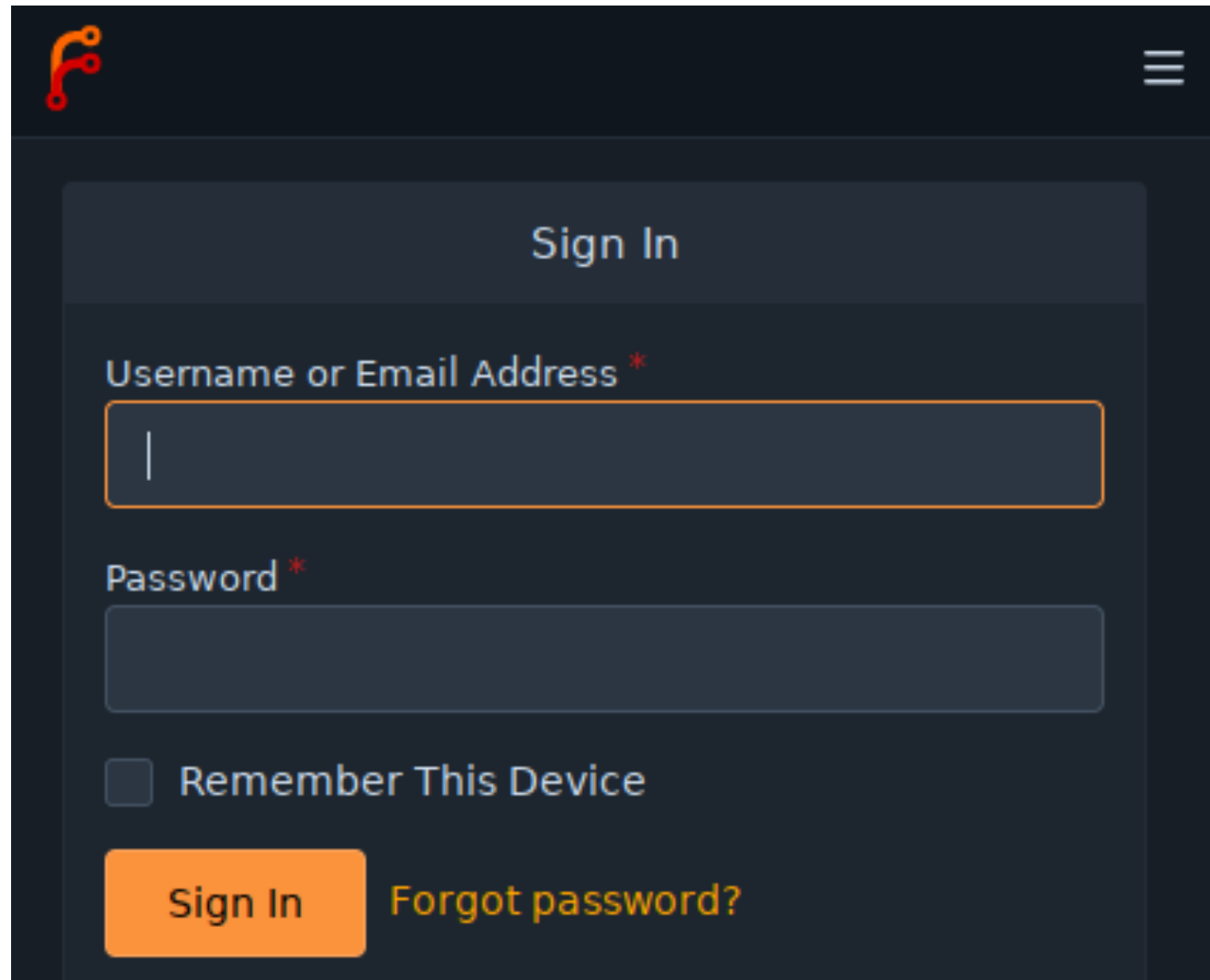
zwp_text_input_unstable_v3

Squeekboard



MISTAKE 1: sticking to keyboard roots

MISTAKE 1: sticking to keyboard roots



The image shows a dark-themed user interface for a sign-in page. At the top left is a red logo resembling a stylized 'f'. At the top right is a hamburger menu icon. The main content area is a dark gray box with the title 'Sign In' centered at the top. Below the title are two input fields: 'Username or Email Address *' and 'Password *'. The first field has a vertical cursor. Below the password field is a checkbox labeled 'Remember This Device'. At the bottom left is an orange 'Sign In' button, and to its right is a yellow link 'Forgot password?'.

Sign In

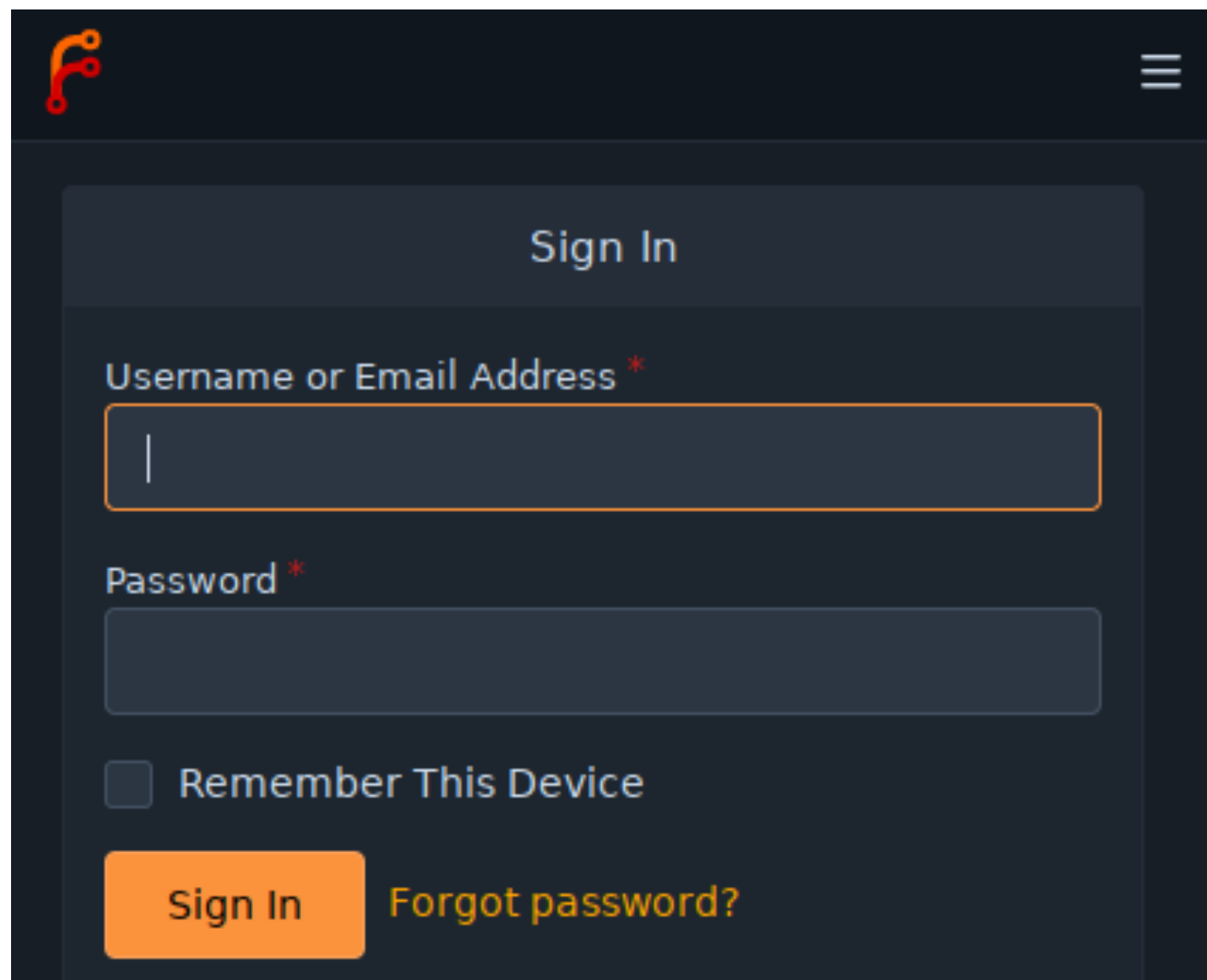
Username or Email Address *

Password *

Remember This Device

Sign In [Forgot password?](#)

MISTAKE 1: sticking to keyboard roots



Sign In

Username or Email Address *

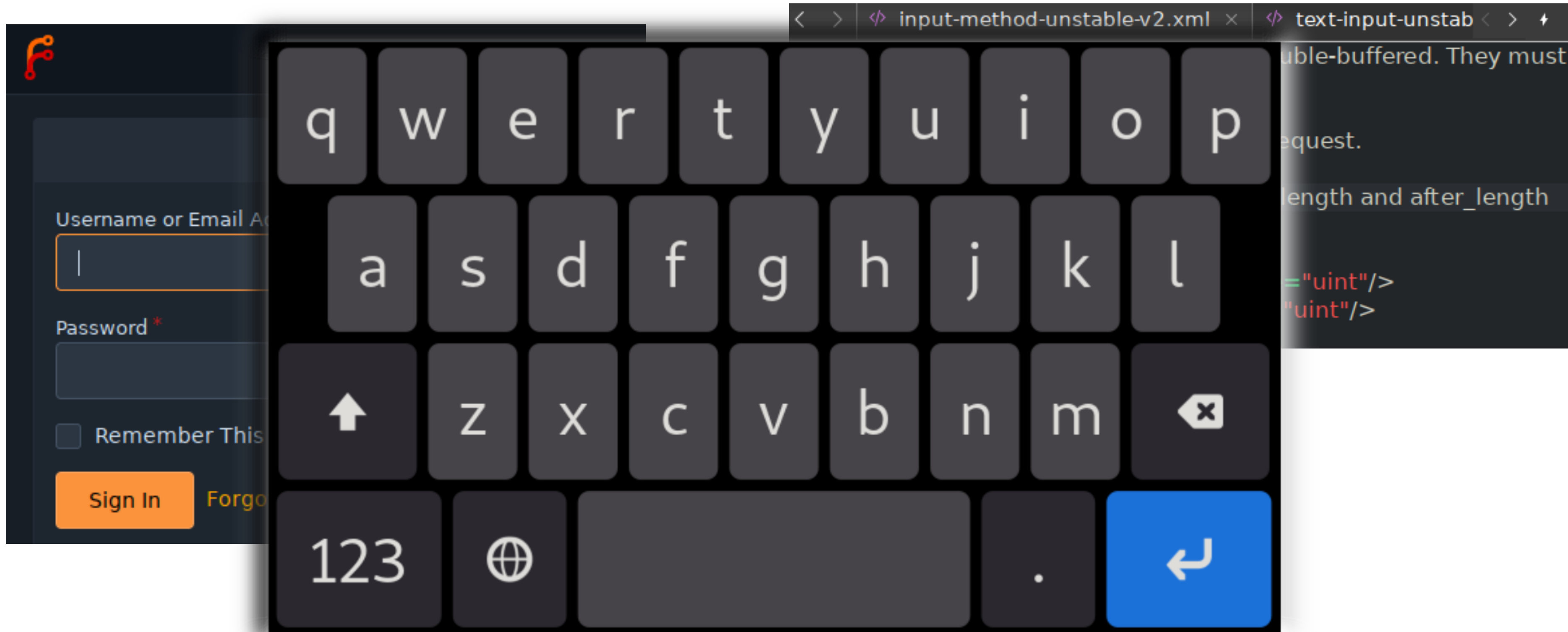
Password *

Remember This Device

Sign In [Forgot password?](#)

```
< > input-method-unstable-v2.xml x text-input-unstab < > ⚡
270 Values set with this event are double-buffered. They must
    ↳ be applied
271 and reset to initial on the next
    ↳ zwf_input_method_v2.commit request.
272
273 The initial values of both before_length and after_length
    ↳ are 0.
274 </description>
275 <arg name="before_length" type="uint"/>
276 <arg name="after_length" type="uint"/>
277 </request>
```

MISTAKE 1: sticking to keyboard roots



MISTAKE 1: sticking to keyboard roots

Input method types "Błąą"ą

text "B"

text "Bł"

text "Błą"

text "Błąą"

finish

MISTAKE 1: sticking to keyboard roots

Input method types "Błąą"đ"

```
text "B"  
text "Bł"  
text "Błą"  
text "Błąą"đ"  
finish
```

Keyboard types "Błąą"đ"

```
KeyDown `SHIFT`  
KeyDown `B`  
KeyUp `B`  
KeyUp `SHIFT`  
KeyDown `AltGr`  
KeyDown `L`  
KeyUp `L`  
KeyDown `A`  
KeyUp `A`
```


MISTAKE 1: sticking to keyboard roots

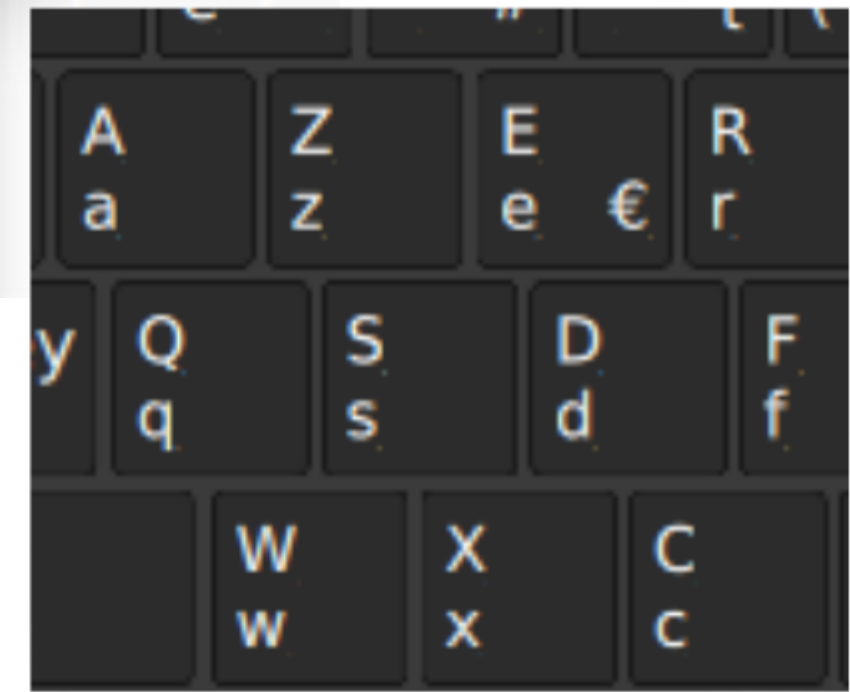
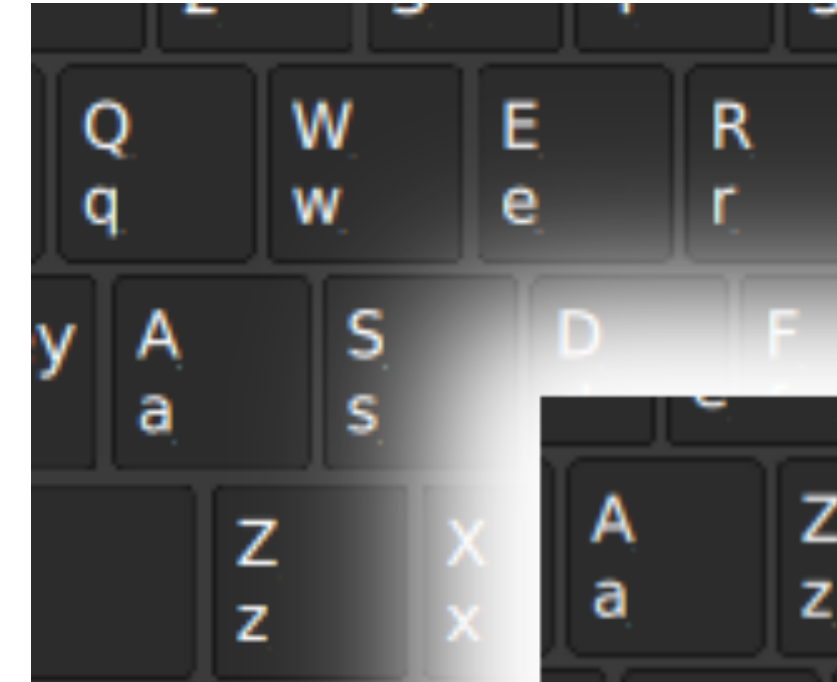
Input method types "Błąą"đ"

```
text "B"  
text "Bł"  
text "Błą"  
text "Błąą"đ"  
finish
```

Keyboard types "Błąą"đ"

```
KeyMap *0xffffbced  
ModifierDown 0x1  
KeyDown 0x102  
KeyUp 0x102  
ModifierUp 0x1  
ModifierDown 0x4  
KeyDown 0x56  
KeyUp 0x56  
U D 0 01
```

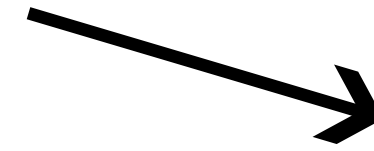
MISTAKE 1: sticking to keyboard roots



"Й" → 0x19



0x19



0x19



Й? Q?



"Q" → 0x19

new "actions" protocol

copy, cut, paste

cursor movement

select all?

next, previous

submit

MISTAKE 2: Bad synchronization

MISTAKE 2: Bad synchronization

Hello, FOSDEM!



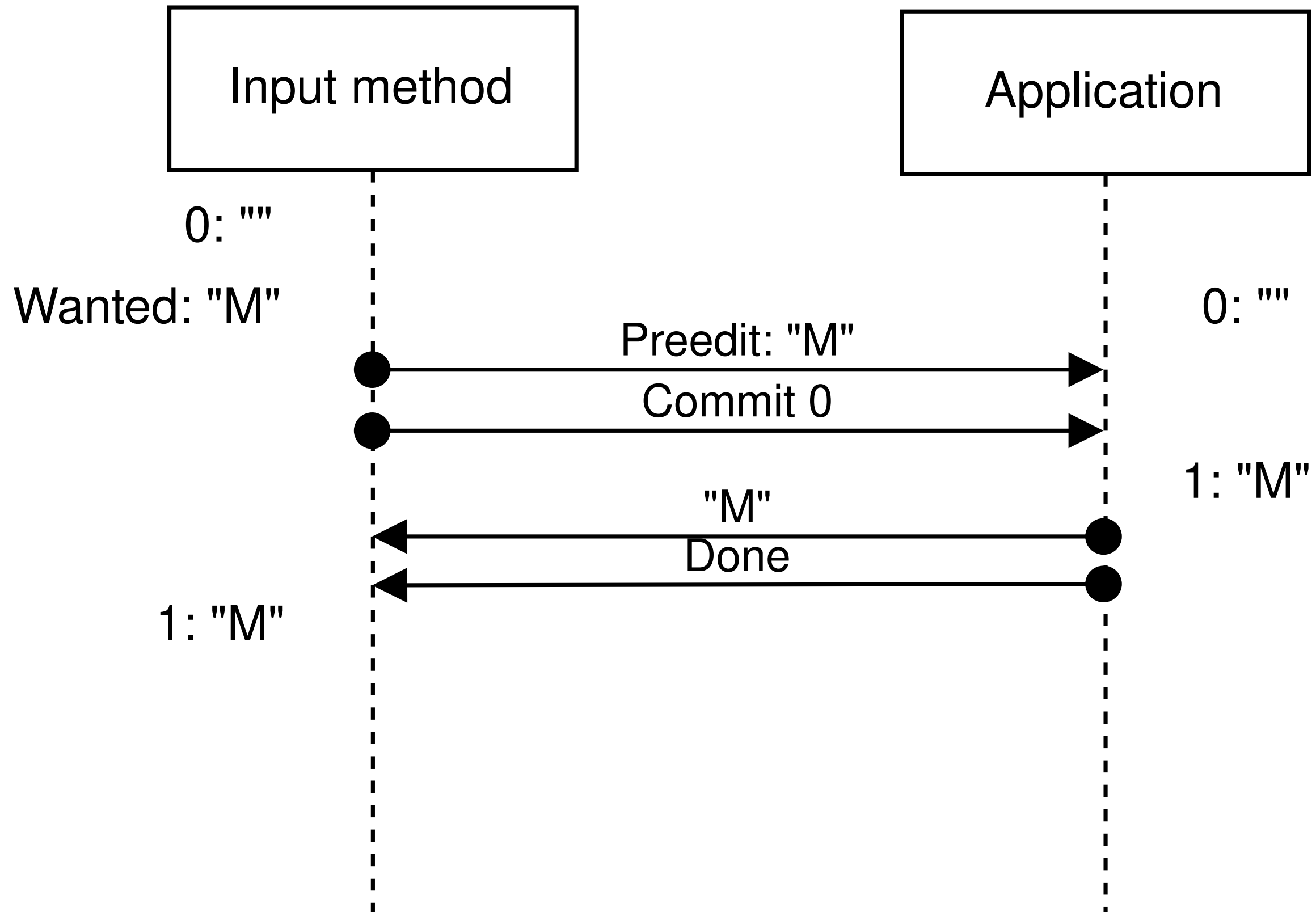
Hell, FOE!

MISTAKE 2: Bad synchronization

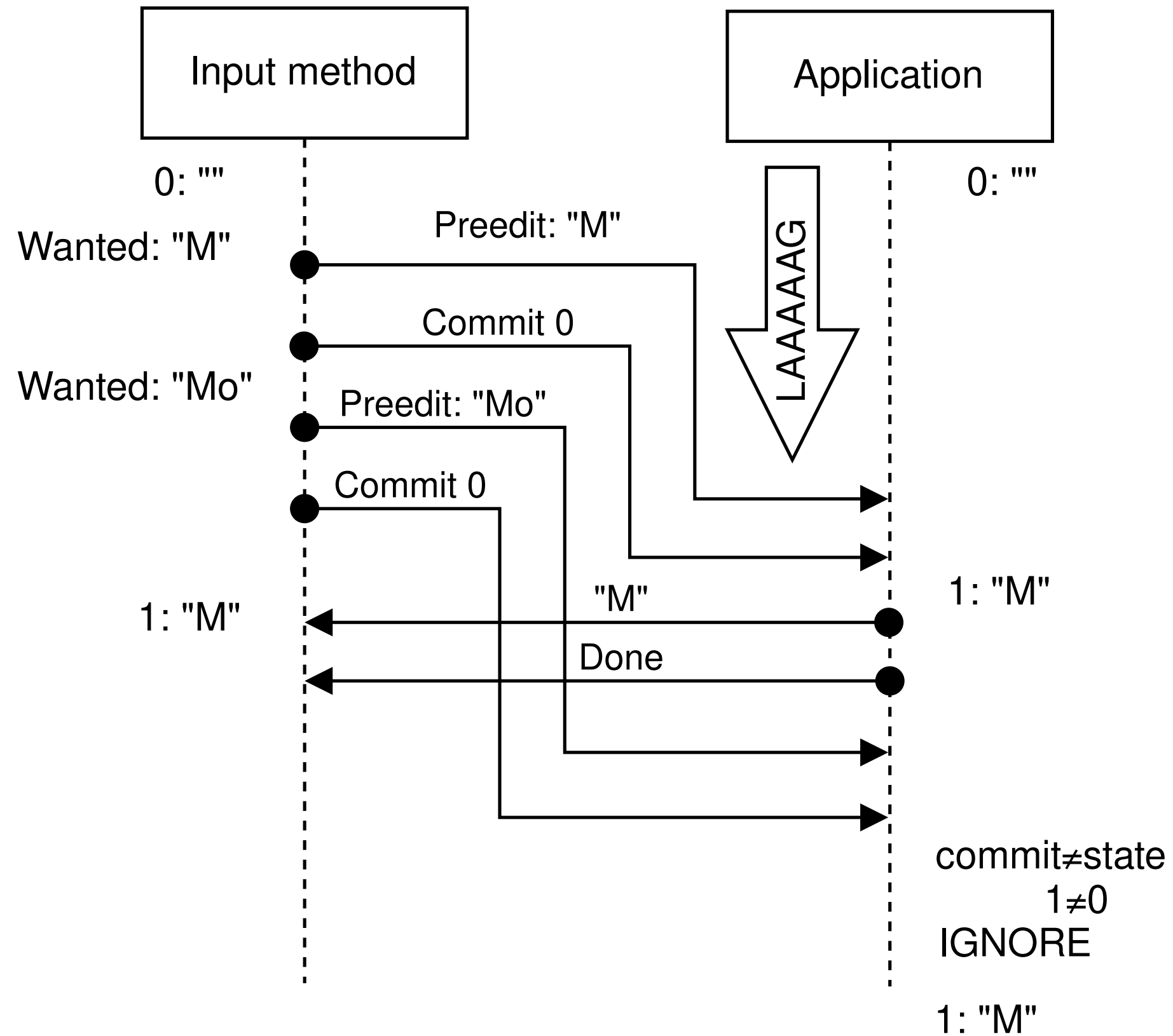
could you file|



MISTAKE 2: Bad synchronization



MISTAKE 2: Bad synchronization



MISTAKE 2: Bad synchronization

```
164 content description list.  
165 """"  
166 parser = XMLParser(ns_clean=True, huge_tree=True)  
167 self.doc = parse(self.f_input, parser=parser)  
168 par|  
169 T+ parallel  
170 T+ parallel_workers  
171 T+ parameter  
172 T+ parent  
173 T+ parents  
174 T+ parse  
175
```

iptor, i.e., which slides to inclu
content_description()
et_layer_structure()) **if not sel**
structure()
pdf to hidden



Explore

Sign in

Register



wayland / wayland-protocols / Commits

wip/text-input-ne...

wayland-protocols

Dec 06, 2021

text-input: Add on_screen_input_provided hint ·

df315b11

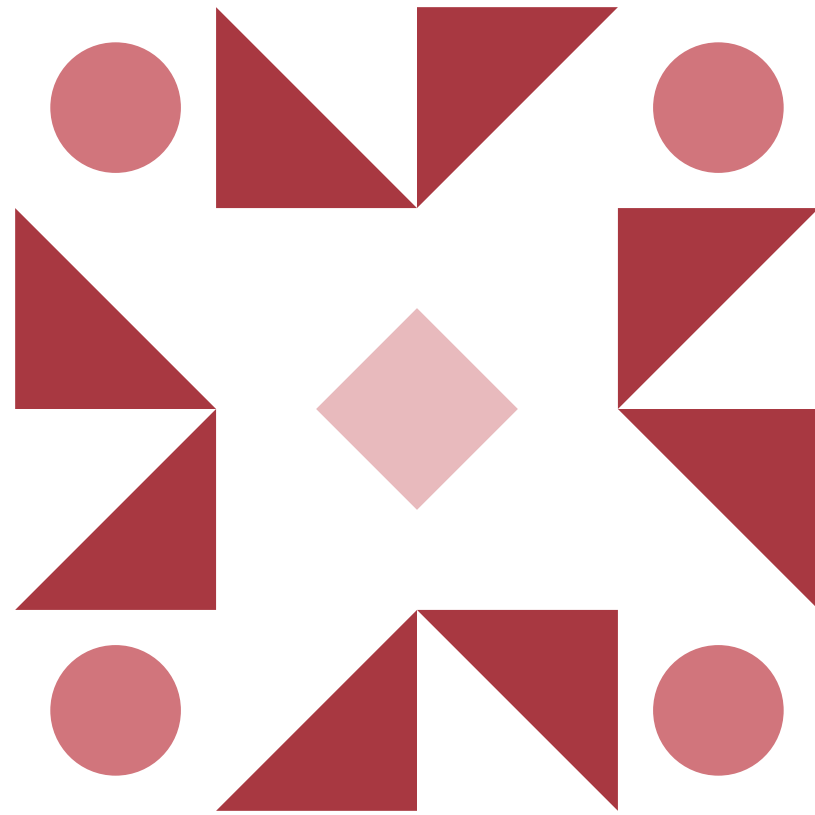
Dorota Czaplejewicz (Purism) authored 4 years ago and
Simon Ser committed 2 years ago



Mar 22, 2021

text-input: Add preedit_commit mode event for

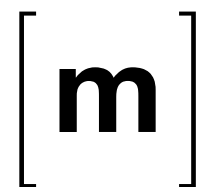
DorotaC.eu



Free{software, lancer}
fosdem_wayland@dorotac.eu



<https://fosstodon.org/@dcz>



@dcz:synod.im