

Exploring a swedish smart home hub

Review by a Linux Hacker

Hannah Kiekens

Playing with Linux & Computers since 1999

Playing with Linux & Computers Professionally since 2010

Software consultant @
TODO: insert new LOGO



Is the smart home a good idea?



?



?

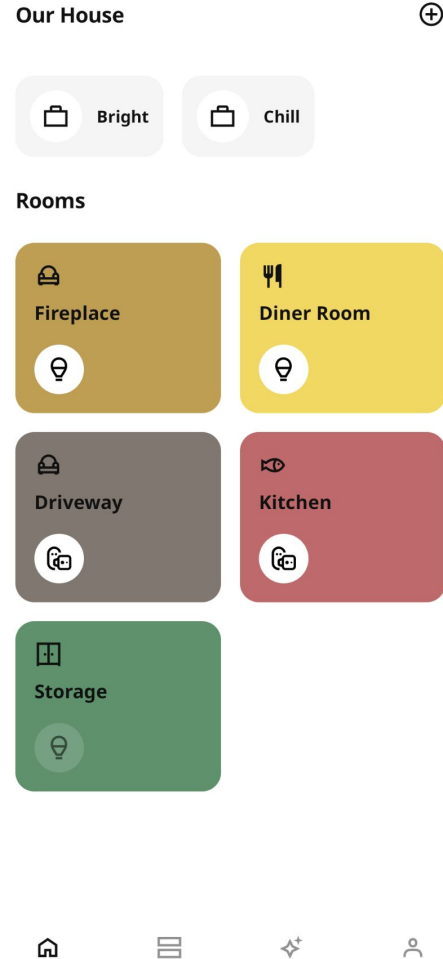


!



The app

Well it's ikea ...



Privacy

+10 Points

← Privacy Statement



Hartelijk dank dat u uw persoonsgegevens toevertrouwt aan IKEA of Sweden AB

Wanneer u een IKEA Home smart Systeem gebruikt om slimme producten te bedienen, creëert u persoonsgegevens die wij zullen moeten verwerken. We zetten ons in om uw privacy te beschermen en om transparant te zijn over hoe we met uw gegevens omgaan.

Wij maken gebruik van cookies en andere technologieën om persoonsgegevens te verzamelen, zoals beschreven in onze cookieverklaring.

Wij gebruiken uw persoonsgegevens om

- Het Systeem en Applicatie deugdelijk te laten functioneren
- U toe te laten het Systeem buitenshuis te bedienen via de Applicatie
- U toe te laten het Systeem te bedienen op meerdere apparaten via de Applicatie
- U toe te laten uw favoriete scenario's op te slaan en aan te passen
- U ondersteuning te bieden met betrekking tot het Systeem en de Applicatie

← Data & privacy



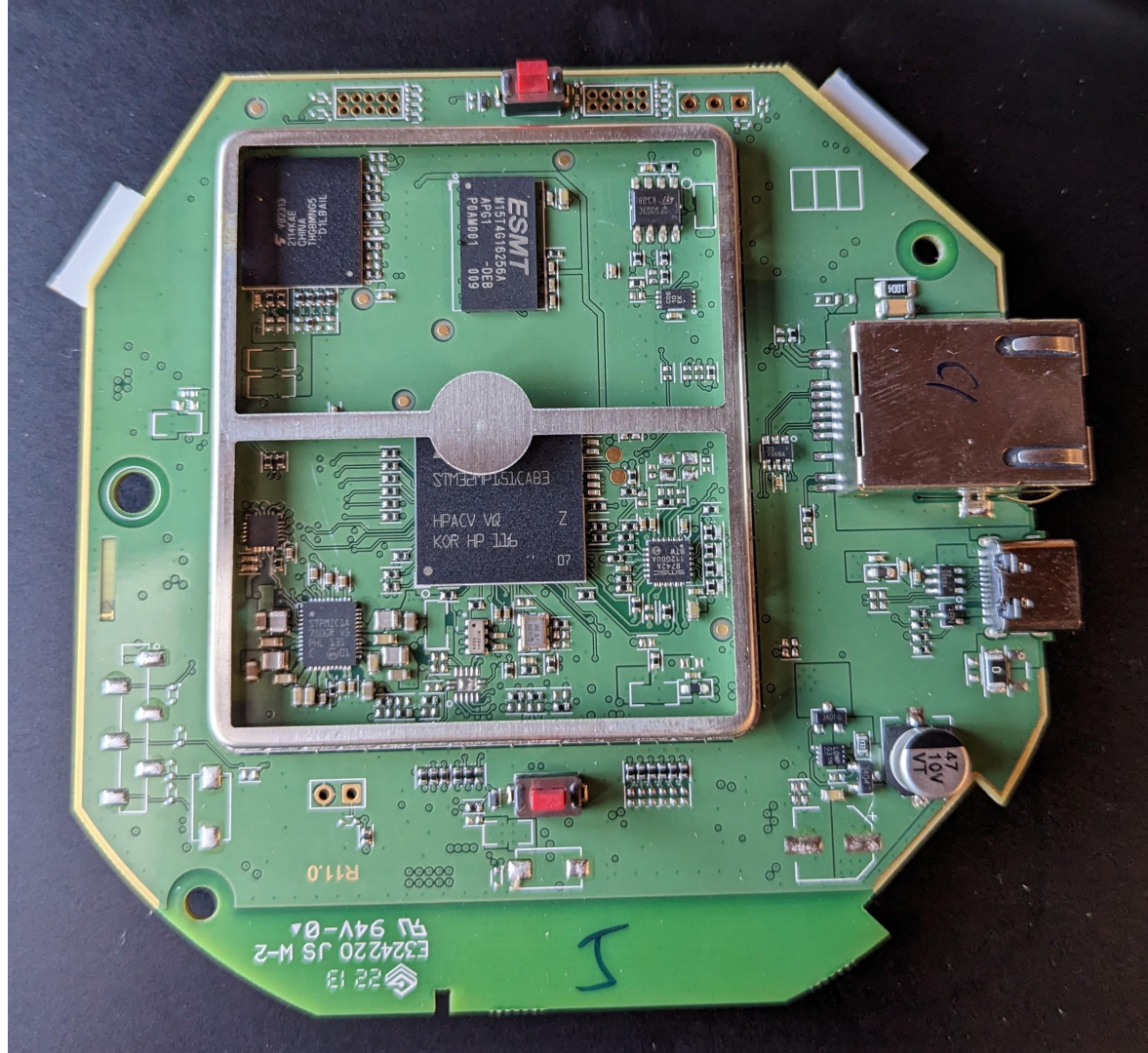
Your hub does not share data with the IKEA Home smart app

We don't share data between your device and our servers to improve the app.

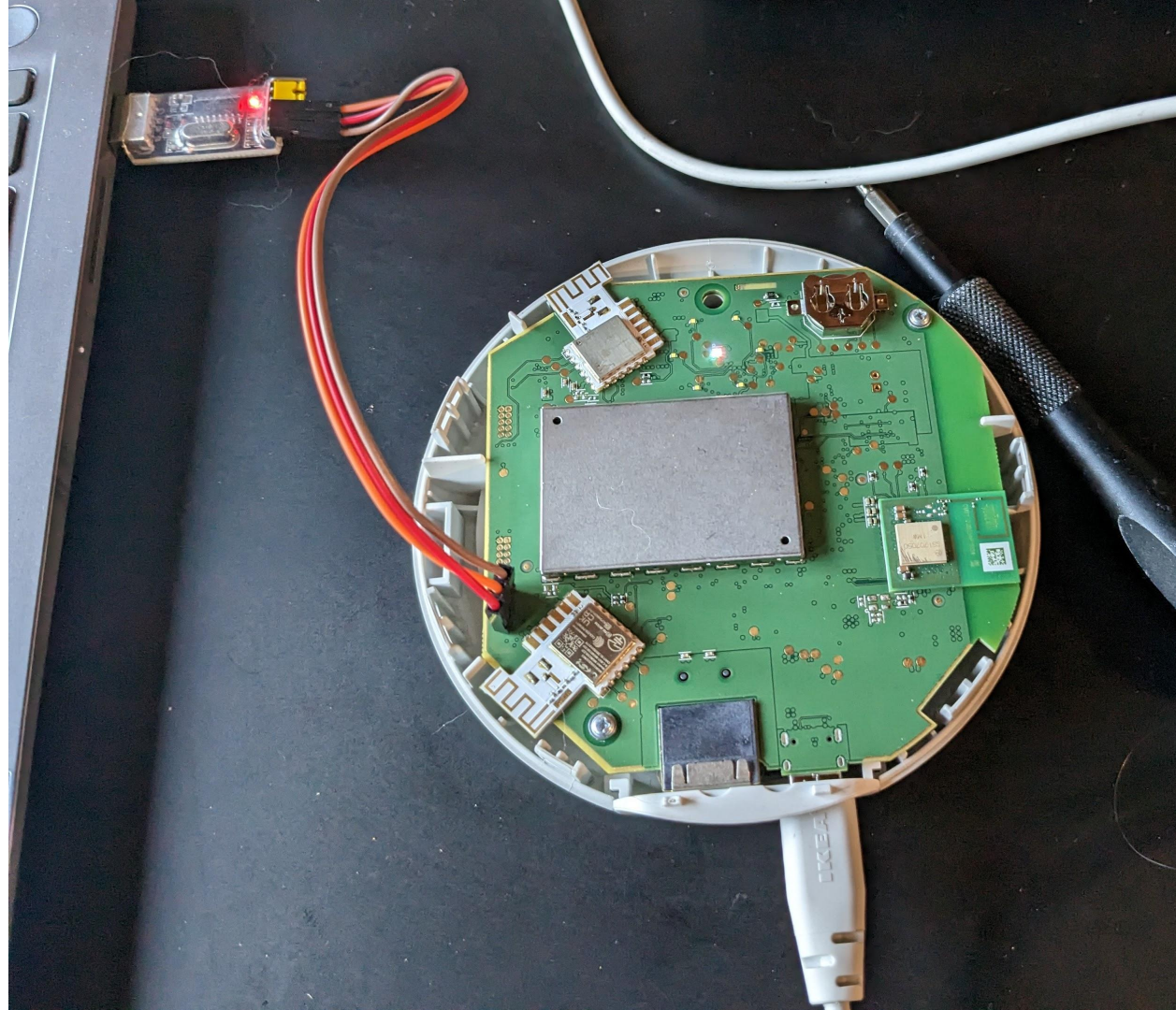
[Read Cookie Policy](#)

Hardware

- STM32MP157CAB3
 - 2 x 650 Mhz
- M15T4G16256A
 - 512 MiB DDR3
- THGBMNG5D1LBAIL
 - 4 GiB e-MMC
- MGM210L
 - 2 x Zigbee + Bluetooth 5.3



Those pads look familiar



```
~: minicom — Konsole
File Edit View Bookmarks Plugins Settings Help
New Tab Split View
Copy Paste Find
NOTICE: CPU: STM32MP151CAB Rev.?
NOTICE: Model: DIRIGERA hub for smart products
NOTICE: Bootrom authentication succeeded
NOTICE: BL2: v2.4-r2.0(release):v2.4-dirty
NOTICE: BL2: Built : 16:43:51, Nov 17 2020
WARNING: FCONF: Invalid config id 26
NOTICE: BL2: Booting BL32
[ 1.066618] stm32-cpufreq stm32-cpufreq: Failed to get chip info: -517
Starting initramfs ...
Starting version 244
Verified OK
Build flavor: release
Creating overlay on etc
Switching root to '/rootfs'...
[ OK ] Started Nexus REST API server.
      Starting Cloud Connector service...
[ OK ] Started Cloud Connector service.
[ OK ] Reached target IKEA Gateway services.
[ OK ] Reached target Multi-User System.
      Starting gateway.target is up LED indicator...
      Starting Update UTMP about System Runlevel Changes...
[ OK ] Started gateway.target is up LED indicator.
[ OK ] Started Update UTMP about System Runlevel Changes.
|
CTRL-A Z for help | 115200 8N1 | NOR | Minicom 2.8 | VT102 | Offline | ttyUSB0
~: minicom x ~: zsh x
```


gpl-code.ikea.com

DIRIGERA-hub-v2.197.00-main.zip

- linux-stm32mp-5.10.61-stm32mp-r2-r0
- systemd-1_244.5-r0
- base-files-3.0.14-r89
- busybox-1.31.1-r0
- Rauc-1.4-r0

Yocto?

The screenshot shows a mobile browser interface for the website gpl-code.ikea.com. The address bar at the top displays the URL. The main heading is "Releases". Below this, the current release is identified as "Version: 2.197.000" with an upward-pointing chevron. A brief description follows: "Bug fixes and performance improvements." The "Release Date" is listed as "2023-01-31". There are two prominent buttons: a dark "Download GPL Code" button and a light "Download License Information" button. At the bottom of the visible release card, the next version is indicated as "Version: 2.172.001" with a downward-pointing chevron.

Yocto

<https://docs.yoctoproject.org/dev/singleindex.html>

35.3 Maintaining Open Source License Compliance During Your Product's Lifecycle

- 35.3.1 Providing the Source Code
- 35.3.2 Providing License Text
- 35.3.3 Providing Compilation Scripts and Source Code Modifications

Missed a chapter Ikea?