

REUSE

Best practices for declaring copyright and licenses

06 February 2021 · FOSDEM

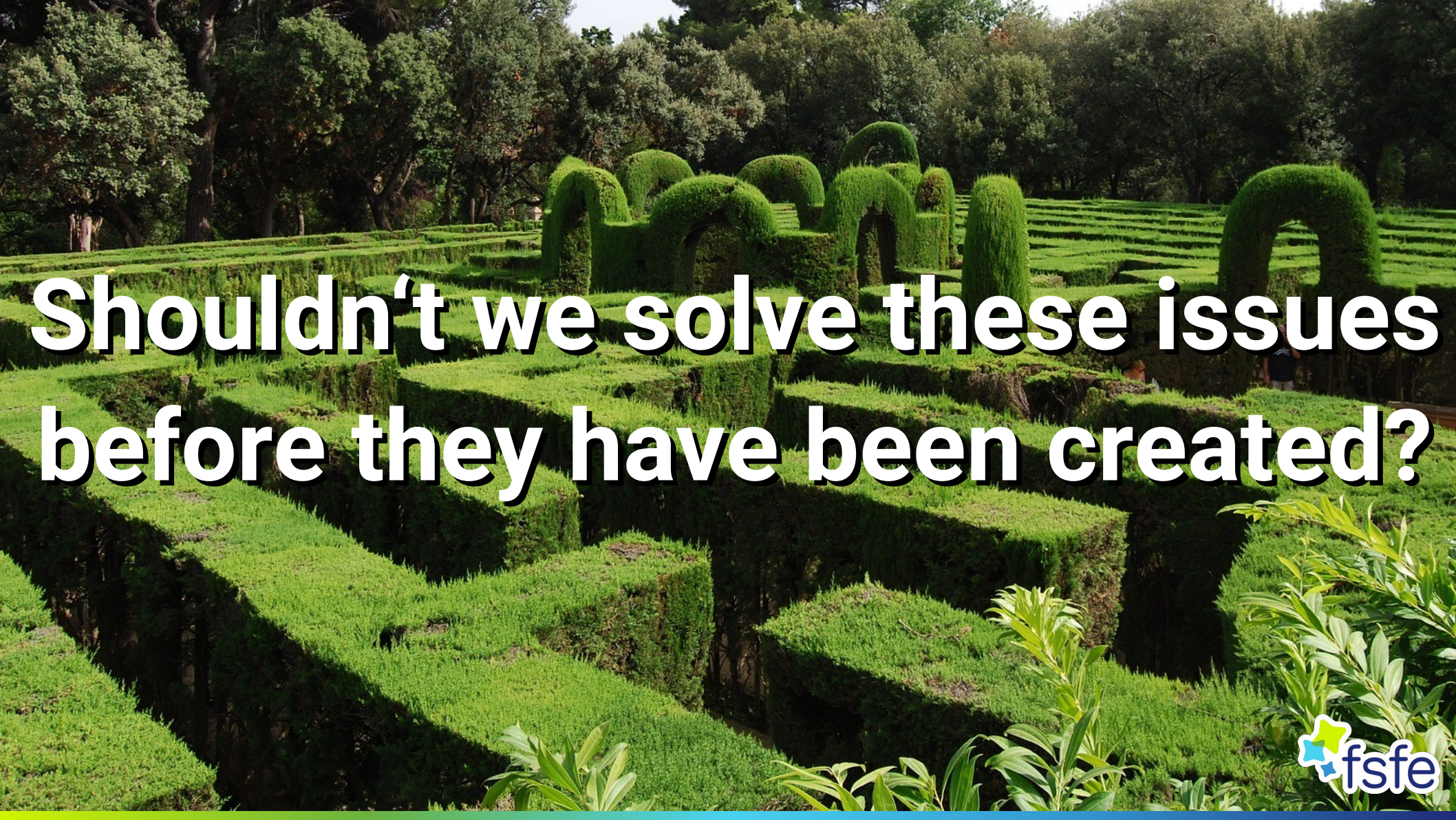
Max Mehl · Program Manager · fsfe.org/about/mehl · [@mxmehl](https://twitter.com/mxmehl) · max.mehl@fsfe.org



Typical FOSS Compliance Issues



- **Missing information** about license and copyright holder of own or third-party code
- License **ambiguity** (e.g. GPL version)
- Cleared information only stored in **silos**
- **Upstream changes** require re-check
- Developers need a lot of **training**
- **Conflicting** compliance practices



**Shouldn't we solve these issues
before they have been created?**

REUSE's Principles



REUSE
S O F T W A R E

- Make it easy to find copyright/licensing information for **every single file** in a repo
- Avoid silos by **storing info inside the repo**
- Info **readable** by humans and machines
- Do not reinvent the wheel, be **compatible**
- Make licensing **easy and fun** for developers, no matter the project size

<https://reuse.software>

Three Simple Steps



REUSE
S O F T W A R E

<https://reuse.software>

1. Choose and provide licenses
2. Add copyright and licensing information to each file
3. Confirm REUSE compliance

1. Choose and provide licenses

- Choose license(s) that the project uses
- Save license text(s) inside the LICENSES/ directory
- Name after SPDX license identifier

```
project/  
├── LICENSES/  
│   └── GPL-3.0-or-later.txt  
└── src/  
    └── main.c
```

2. Copyright and license information

- Add information in every file as comment in the header
 - License(s): *SPDX-License-Identifier*
 - Copyright holder: *Copyright* or *SPDX-FileCopyrightText*

```
/*  
 * SPDX-License-Identifier: GPL-3.0-or-later  
 *  
 * SPDX-FileCopyrightText: 2021 Jane Doe <jane@example.com>  
 * Copyright © 2017 Foo Bar <foo@bar.baz>  
 */
```

2. Copyright and license information

- Two alternatives if file is not editable:

1. **Separate .license file** ←

2. dep5 file in / .reuse

```
project/  
├── img/  
│   ├── cat.jpg  
│   └── cat.jpg.license
```



SPDX-License-Identifier: CC-BY-4.0

SPDX-FileCopyrightText: 2021 Great Artist <artist@example.net>

2. Copyright and license information

- Two alternatives if file is not editable:

1. Separate .license file

2. **dep5 file in / .reuse** ←

```
Format: https://www.debian.org/doc/packaging-manuals/copyright-format/1.0
Upstream-Name: reuse-example
Upstream-Contact: Free Software Foundation Europe <https://fsfe.org>
Source: https://github.com/fsfe/reuse-example

Files: img/*
Copyright: 2021 Great Artist <artist@example.net>
License: CC-BY-4.0
```

3. Confirm REUSE compliance

Use the REUSE helper tool to check for missing information

```
$ reuse lint
```

```
# SUMMARY
```

```
* Bad licenses: 0  
* Missing licenses: 0  
* Unused licenses: 0  
* Used licenses: CC-BY-4.0, CC0-1.0, GPL-3.0-or-later  
* Read errors: 0  
* Files with copyright information: 6 / 6  
* Files with license information: 6 / 6
```

```
Congratulations! Your project is compliant with version 3.0 of the  
REUSE Specification :-)
```

REUSE Specialities

- License text files stored in LICENSES/ directory
- Every file shall contain comment header with copyright and SPDX license identifier tags
- Alternatives for uncommentable files
- Unambiguous copyright and licensing information for every single file of a repository

Components

Best Practices

Specification ready to be integrated by community and industry

Helper Tool

Support developers in making their projects REUSE compliant



Tutorial / FAQ

Low entry barrier, answering basic and advanced questions

Demo Time (Tool)

Components

Best Practices

Specification ready to be integrated by community and industry

Helper Tool

Support developers in making their projects REUSE compliant



Tutorial / FAQ

Low entry barrier, answering basic and advanced questions

API / Badge

Quick check of a repository, and generate a dynamic badge

Demo Time (API)

Ongoing Developments



Tools

Improvements and more automation for REUSE helper tool and API



Specification

More flexibility with REUSE.yaml and snippet declaration



Integration

Better integration of REUSE in platforms and other initiatives



Spread

Support communities and companies with adopting the best practices

REUSE Adopters

- 400+ registered API projects
- Majority of projects (100+) of the *Next Generation Internet* EU project
- KDE and its frameworks
- Policies of Siemens, SAP, Liferay, LF Energy...
- Linux-Kernel (partly)
- You?

Your Next Steps

- Sign up the mailing list to take part
- Make one of your projects REUSE compliant
- Integrate REUSE into your community and company policies
- Contribute code to REUSE, or become sponsor like **SIEMENS**
- Help others to adopt REUSE

Thank you! Questions?



REUSE
S O F T W A R E

Web: reuse.software

List: lists.fsfe.org/mailman/listinfo/reuse

Git: github.com/fsfe | git.fsfe.org/reuse

Legal Information

- Slides licensed under CC-BY-SA-4.0 unless stated otherwise
- FontAwesome icons v4.7.0 by Dave Gandy under SIL OFL 1.1