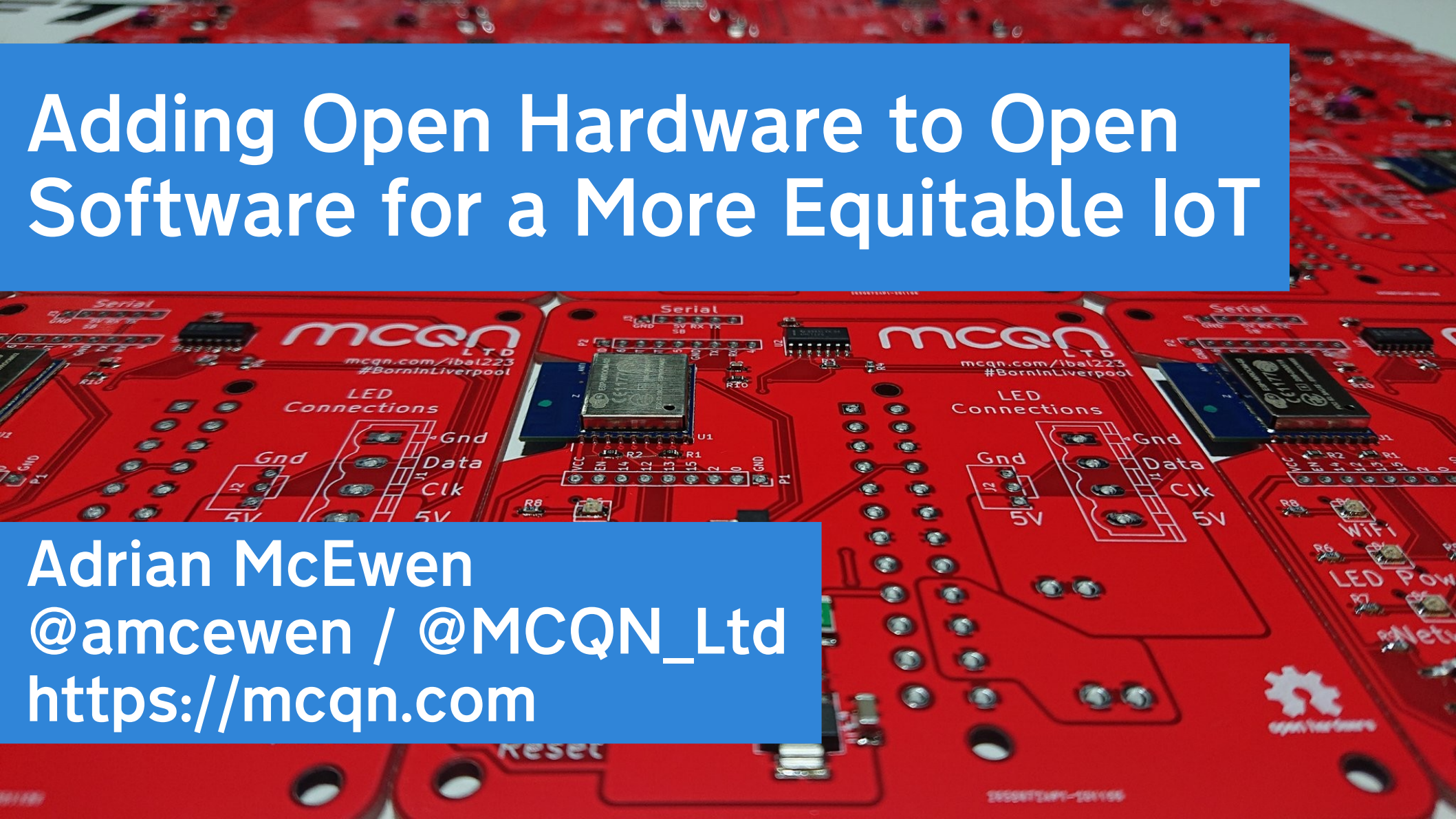


Adding Open Hardware to Open Software for a More Equitable IoT

Adrian McEwen
@amcewen / @MCQN_Ltd
<https://mcqn.com>



1. What's wrong with IoT?
2. How can Open Hardware and Open Software help?
3. My journey so far
4. The future...

Reliance on Distant Servers



Geoff Belknap

@geoffbelknap



I... can't vacuum... because us-east-1 is down.

8:06 PM · Nov 25, 2020



11K



1.5K people are Tweeting about this

Surveillance Capitalism



Fyodor

@Fyodor32768



Replying to @internetofshit

Literally all of the reviews are "This is a great product but don't stick a facebook camera in your house"



No one should buy the Facebook Portal TV

In over six years of testing tech, this is a first for me.

[cnet.com](https://www.cnet.com)

1:55 PM · Dec 9, 2020



At the Whim of Tech Co's

GOOGLE SMART HOME TECH

Nest is permanently disabling the Revolv smart home hub

86

Starting May 15th, the Revolv hub and app won't work

By [Nick Statt](#) | [@nickstatt](#) | Apr 4, 2016, 3:40pm EDT

Via [Arlo Gilbert \(Medium\)](#) and [Business Insider](#) | Source [Revolv](#)



Listen to this article



SHARE



AD

Ethics/Sustainability



Materials Energy Toxicity Matrix

Designing out waste matrix template.

Thanks to [ThingsCon 2018](#) and [@mrchrisadams](#) excellent talk on [Reducing Carbon In the Digital Realm](#) at [Festival of Maintenance](#)

ThingsCon 2018 Designing out Waste Based on the MET Matrix from TU Delft Design Guide	Extraction of Raw Materials	Design & Production	Packaging & Distribution	Use & Maintenance	End of life Disposal
Materials Material as an input (mined, grown, harvested)	<i>What are the materials used?</i>	<i>What processes are used to make it?</i>	<i>What kind of packaging is used for the item and in transit?</i>	<i>What consumables are used by the product? What is needed to keep it working?</i>	<i>Which bits can be recycled? Are their local recirculation schemes for them?</i>
Energy Energy used	<i>How much energy is used to get the materials you use?</i>	<i>How much energy does the</i>	<i>How easy is it to transport? How</i>	<i>How much power does it use? How much energy is used</i>	<i>How much energy is used to treat the</i>

1. What's wrong with IoT?
2. How can Open Hardware and Open Software help?
3. My journey so far
4. The future...

Data and UI On Device



Color palette



Default

Effect speed



Effect intensity



Effect mode

Solid

Android

Blink

Blink Rainbow

Bouncing Balls

Bpm

Breathe

Candle

Candle Multi

Chase

Chase Flash

Chase Flash Rnd

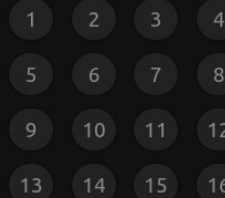


Segment 0



+ Add segment

Load from slot



Saving mode



Slot 16 can save all segments.

Preset cycle



First preset: 1

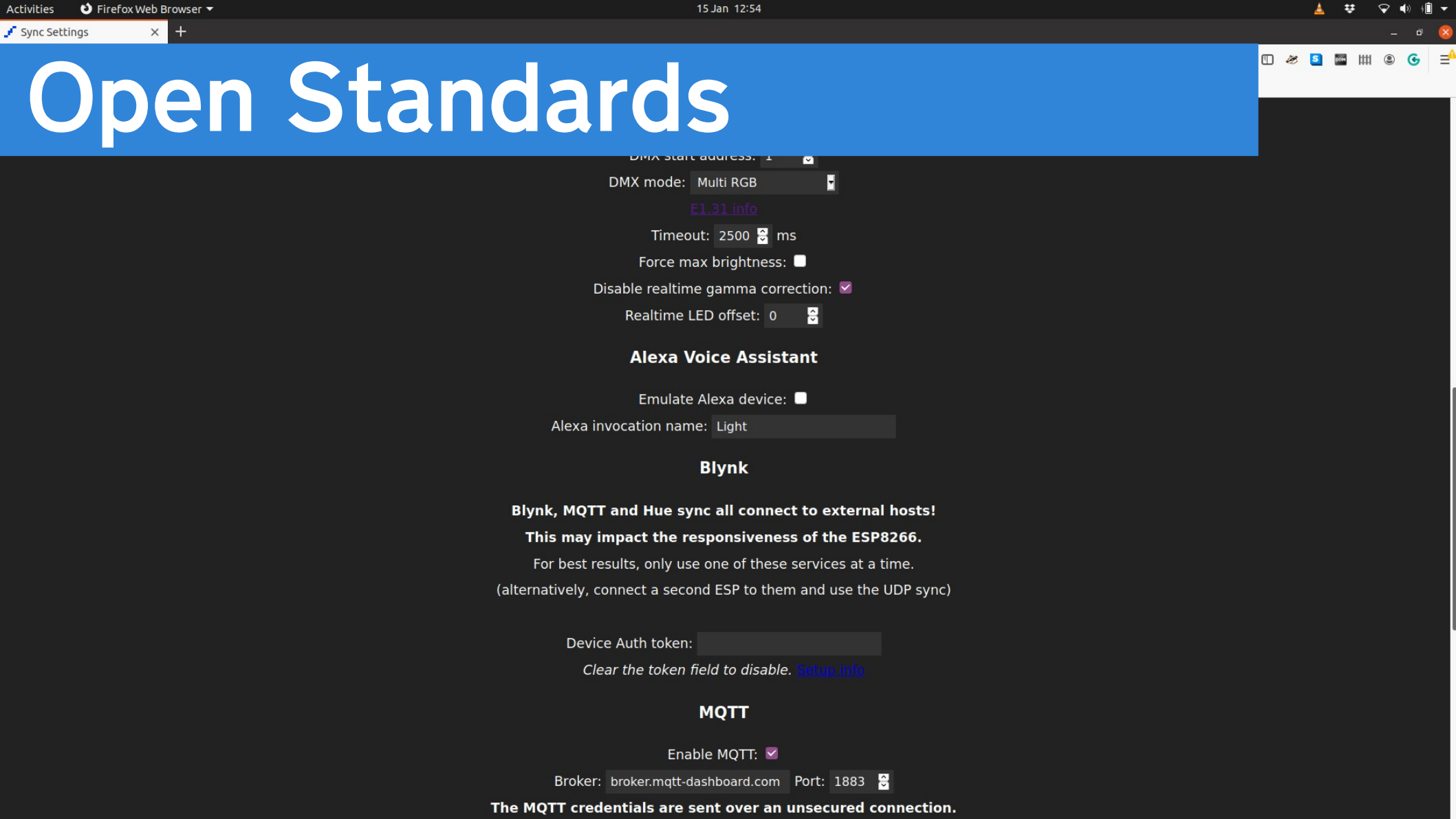
Last preset: 5

Time per preset: 1.2 s

Transition: 0.7 s

Brightness





Open Standards

DMX start address: 1

DMX mode: Multi RGB

[E1.31 info](#)

Timeout: 2500 ms

Force max brightness: ☐

Disable realtime gamma correction: ☒

Realtime LED offset: 0

Alexa Voice Assistant

Emulate Alexa device: ☐

Alexa invocation name: Light

Blynk

Blynk, MQTT and Hue sync all connect to external hosts!

This may impact the responsiveness of the ESP8266.

For best results, only use one of these services at a time.

(alternatively, connect a second ESP to them and use the UDP sync)

Device Auth token:

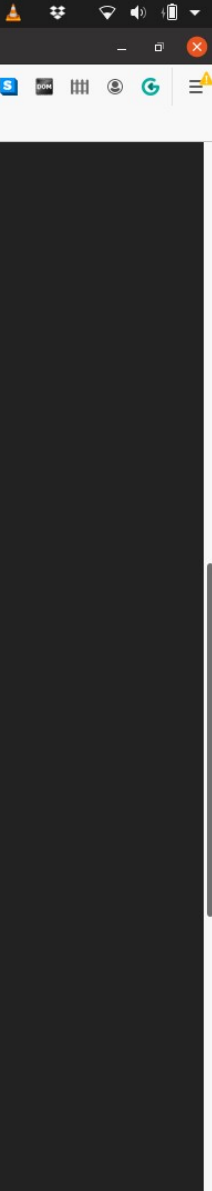
Clear the token field to disable. [Setup info](#)

MQTT

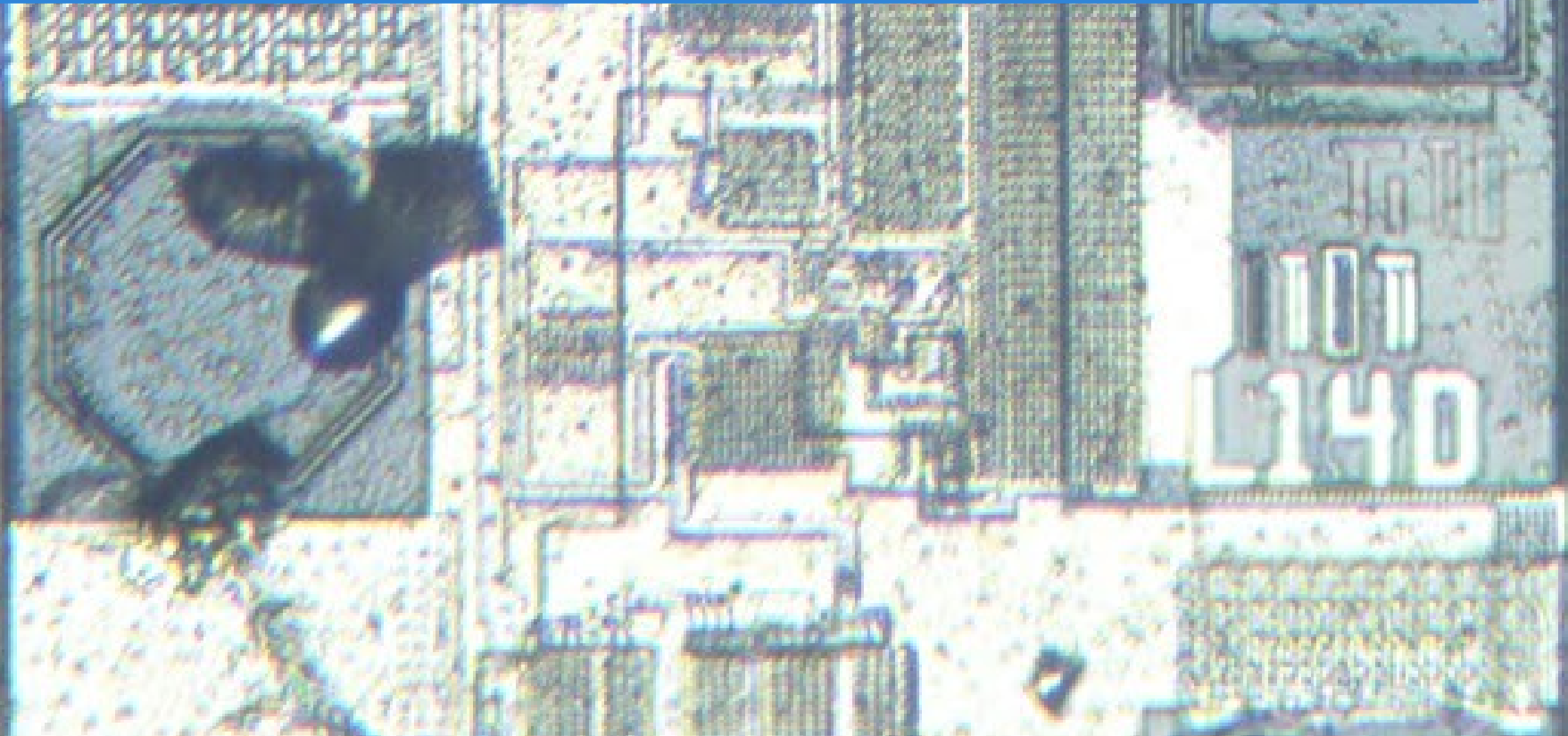
Enable MQTT: ☒

Broker: broker.mqtt-dashboard.com Port: 1883

The MQTT credentials are sent over an unsecured connection.

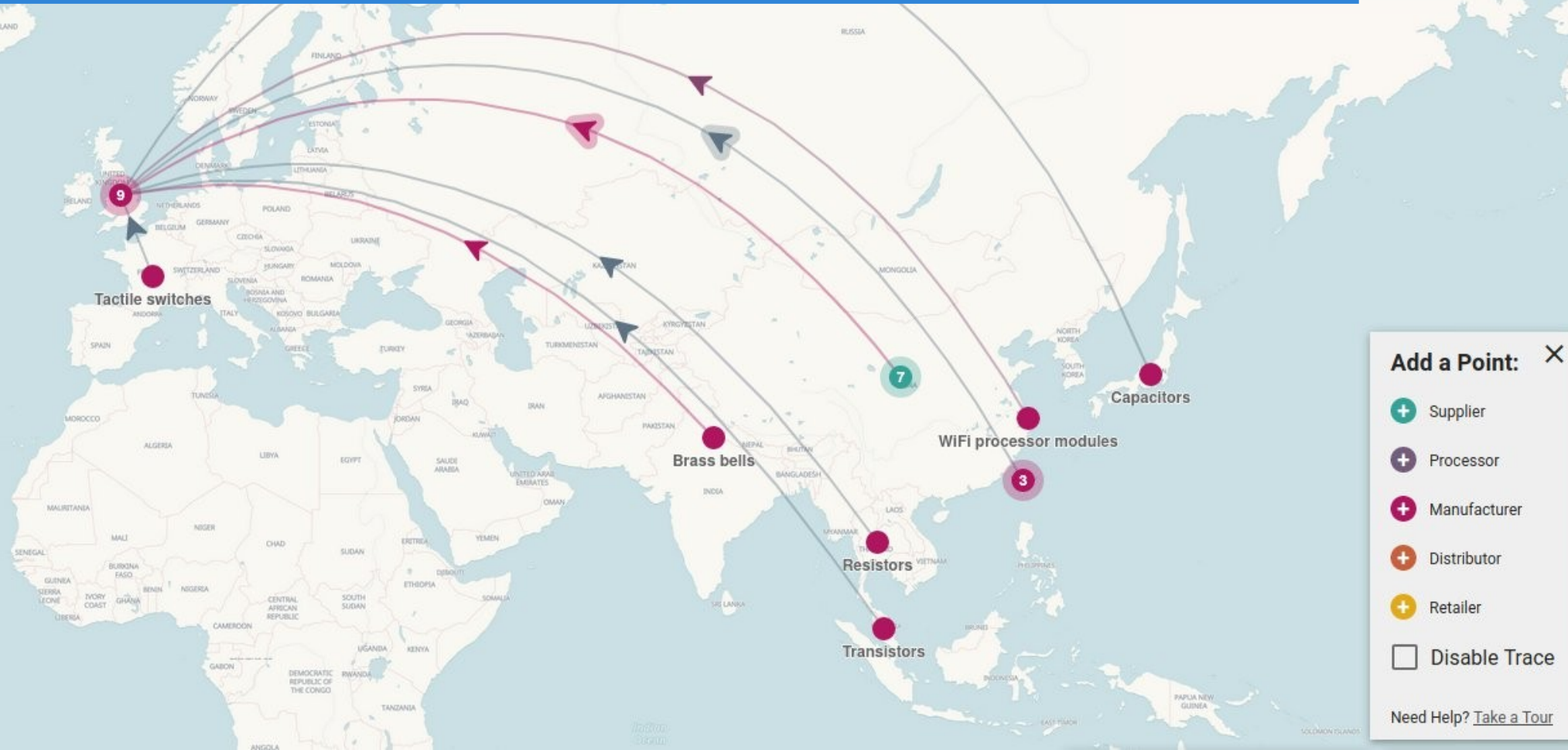


Open Schematics



<https://electronupdate.blogspot.com/2021/01/amazon-echo-flex-microphone-mute-real.html>

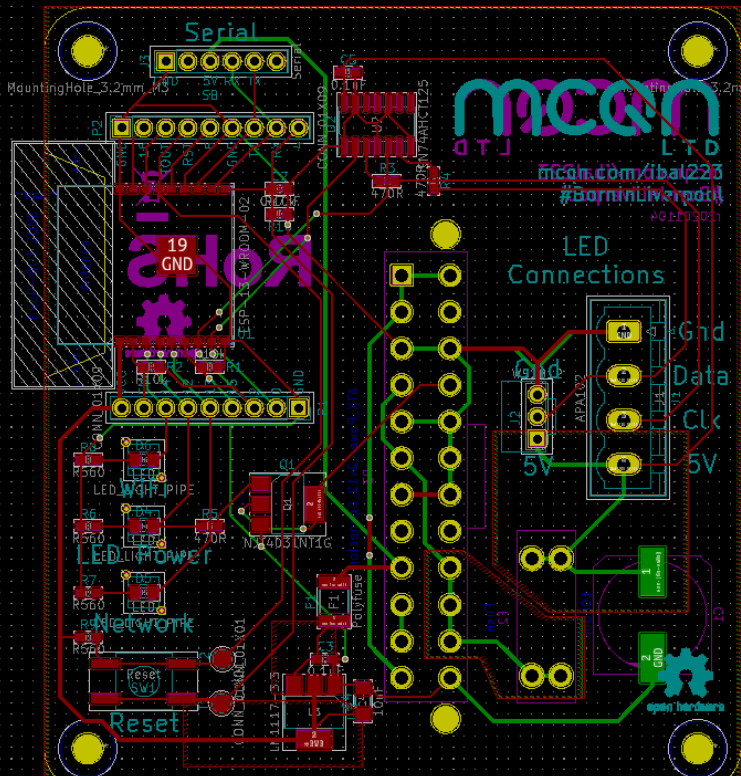
Open Supply Chains?



1. What's wrong with IoT?
2. How can Open Hardware and Open Software help?
- 3. My journey so far**
4. The future...



Kicad: PCB layout



The image shows a Kicad PCB layout for a baby's LED nightlight. The board is populated with various components including a microcontroller (MCU), a power supply (PS), a reset button, a network interface, and a LED array. The layout is color-coded by layer: F.Cu (red), B.Cu (green), F.Adhes (purple), B.Adhes (blue), F.Paste (brown), B.Paste (cyan), F.Silks (pink), B.Silks (purple), F.Mask (yellow), B.Mask (grey), Dwgs.User (white), Cmts.User (blue), Eco1.User (green), Eco2.User (yellow), Edge.Cuts (black), Margin (pink), F.CrtYd (grey), B.CrtYd (grey), F.Fab (grey), and B.Fab (purple). The layout includes a central MCU, a power supply section with a 5V regulator, a reset button, a network interface, and a LED array. The board is populated with various components including a microcontroller (MCU), a power supply (PS), a reset button, a network interface, and a LED array. The layout is color-coded by layer: F.Cu (red), B.Cu (green), F.Adhes (purple), B.Adhes (blue), F.Paste (brown), B.Paste (cyan), F.Silks (pink), B.Silks (purple), F.Mask (yellow), B.Mask (grey), Dwgs.User (white), Cmts.User (blue), Eco1.User (green), Eco2.User (yellow), Edge.Cuts (black), Margin (pink), F.CrtYd (grey), B.CrtYd (grey), F.Fab (grey), and B.Fab (purple). The layout includes a central MCU, a power supply section with a 5V regulator, a reset button, a network interface, and a LED array.

Layers Manager

Layers	Items
<input checked="" type="checkbox"/> F.Cu	
<input checked="" type="checkbox"/> B.Cu	
<input checked="" type="checkbox"/> F.Adhes	
<input checked="" type="checkbox"/> B.Adhes	
<input checked="" type="checkbox"/> F.Paste	
<input checked="" type="checkbox"/> B.Paste	
<input checked="" type="checkbox"/> F.Silks	
<input checked="" type="checkbox"/> B.Silks	
<input checked="" type="checkbox"/> F.Mask	
<input checked="" type="checkbox"/> B.Mask	
<input checked="" type="checkbox"/> Dwgs.User	
<input checked="" type="checkbox"/> Cmts.User	
<input checked="" type="checkbox"/> Eco1.User	
<input checked="" type="checkbox"/> Eco2.User	
<input checked="" type="checkbox"/> Edge.Cuts	
<input checked="" type="checkbox"/> Margin	
<input checked="" type="checkbox"/> F.CrtYd	
<input checked="" type="checkbox"/> B.CrtYd	
<input checked="" type="checkbox"/> F.Fab	
<input checked="" type="checkbox"/> B.Fab	

Pads 156 Vias 18 Track Segments 323 Nodes 144 Nets 39 Unrouted 0

Z 2.20 X 71.628000 Y 56.007000 dx 71.628000 dy 56.007000 dist 90.925 grid X 0.127000 Y 0.127000 mm

PCB Manufacturing

- * OSHPark – <https://oshpark.com/>
- * JLCPCB – <https://jlcpcb.com>
- * European Circuits – <https://european-circuits.co.uk>
- * Many more...

Toward Utopia for the Many

The future I *want* embodies different values.

I want my home to be voice controlled – but I want it without centralised data capture.

I want car-sharing schemes and last mile delivery – but I want it to operate through mutualism and co-operatives.

I want home security drones – but I want them to make their domestic visual index available to a private app so I can text-search my bookshelves for that book I can't lay my hands on, rather than them using it to train their ad targeting A.I.

Privacy. Agency. Mutualism. Equality.

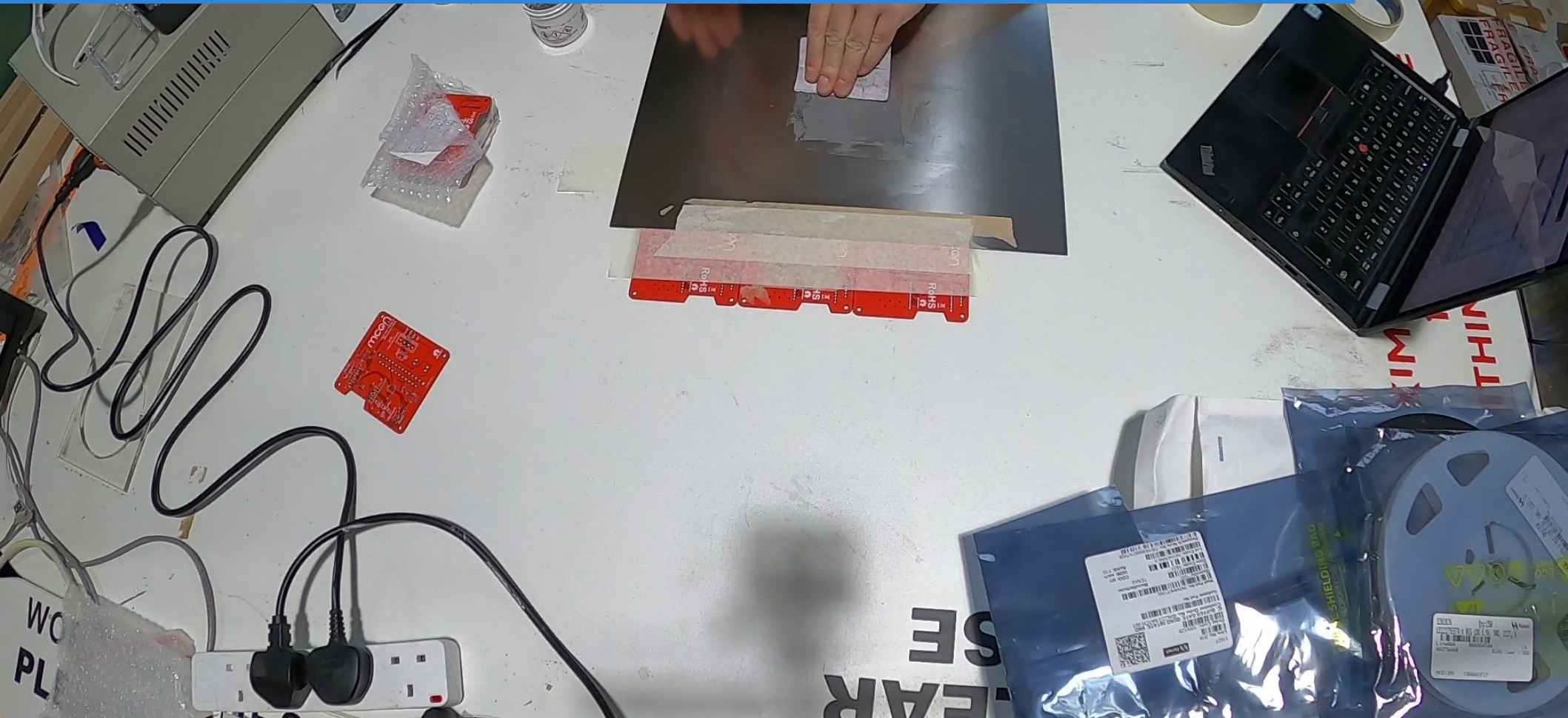
I'm not saying these futures are impossible, but they feel hard to reach from where we are right now.

Because honestly, it feels like I don't get to choose, we don't get to choose, those futures.

<http://interconnected.org/home/2020/12/11/thingscon>

surrounds our tribe of designers, technologists, and founders. It's all those adjacent tribes that never get to see the idealism and the intentions. The marketers, retailers,

PCB Assembly



FreeCAD

Labels & Attributes

Pad

Sketch

ShapeBinder

SubtractivePipe

Bottle_M_ThreadProfile

Pocket

SeedAperture

Pocket001

SecondSeedAperture

UnusedUpperPerch

Helix

KeyDimensions

SeedRestrictor

Lip

Origin001

Revolution

LipProfile

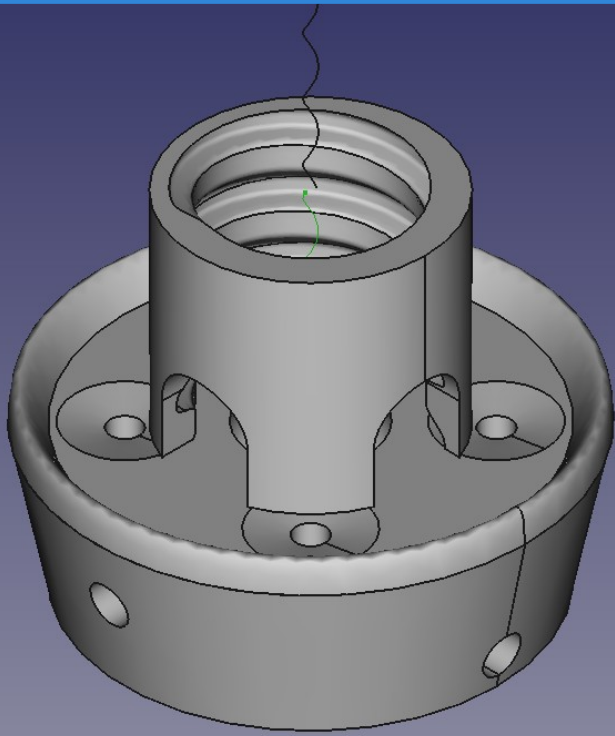
Chamfer

DrainageHoles

Property	Value
Base	
Trace Su...	false
Label	ShapeBinder

View

Data



Go

Front

Right

Top

Left

Back

Bottom

z

y

x

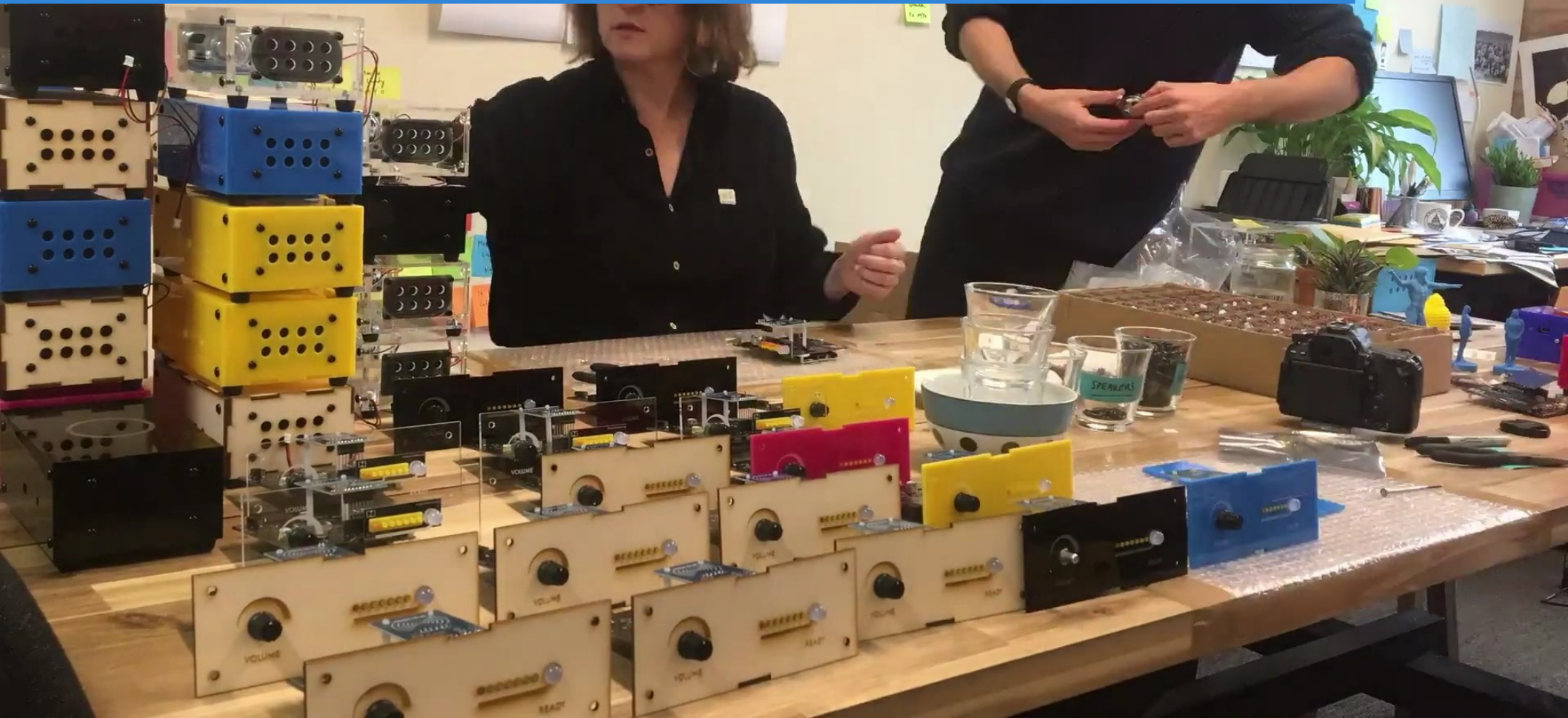
Start page

AckersBell : 1

BottleFeeder : 1

CAD 181.40 mm x 117.18 mm

Fabrication: Laser-cutting



Fabrication: CNC



Sales

[DIY Electronics](#)
[3D Printing & CNC](#)
[Camera Equipment](#)
[IoT & Smart Home](#)
[Robots & Drones](#)
[Sound](#)
[Supplies](#)
[Flea Market](#)
[Beta](#)

Electronics / Lights

Remember that changes to your product can take up to 15 minutes to update across the site.

My Baby's Got LED

An ESP8266 board to control a string of RGB LED Neopixels, powered by a standard ATX PC power supply

Designed by [MCQN Ltd](#) in United Kingdom

[Wishlist](#)
[Tweet](#)
[Share](#)
[Pin](#)



\$55.00

(£41.41 GBP)

Shipping to United Kingdom starts at \$5.00 (£3.76 GBP)

Ships from United Kingdom

Quantity*

1 + -

Only 50 left in stock, order now!

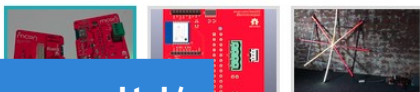


Buy with confidence.

Our Tindie Guarantee protects your purchase from fraud. [Learn More](#)

About Seller

MCQN Ltd



Control a string of RGB LED Neopixels, powered by a standard ATX PC power supply

https://tindie.com/stores/mcqn_ltd/

1. What's wrong with IoT?
2. How can Open Hardware and Open Software help?
3. My journey so far
- 4. The future...**

Thank you.

Adrian McEwen

mcqn.com

[@amcewen](https://twitter.com/amcewen) / [@MCQN_Ltd](https://twitter.com/MCQN_Ltd)

amcewen@mastodon.me.uk

tindie.com/shops/mcqn_ltd/

Made in Liverpool, UK
By MCQN Ltd
www.mcqn.com

