



DSpace @ FOSDEM'20

Bram Luyten

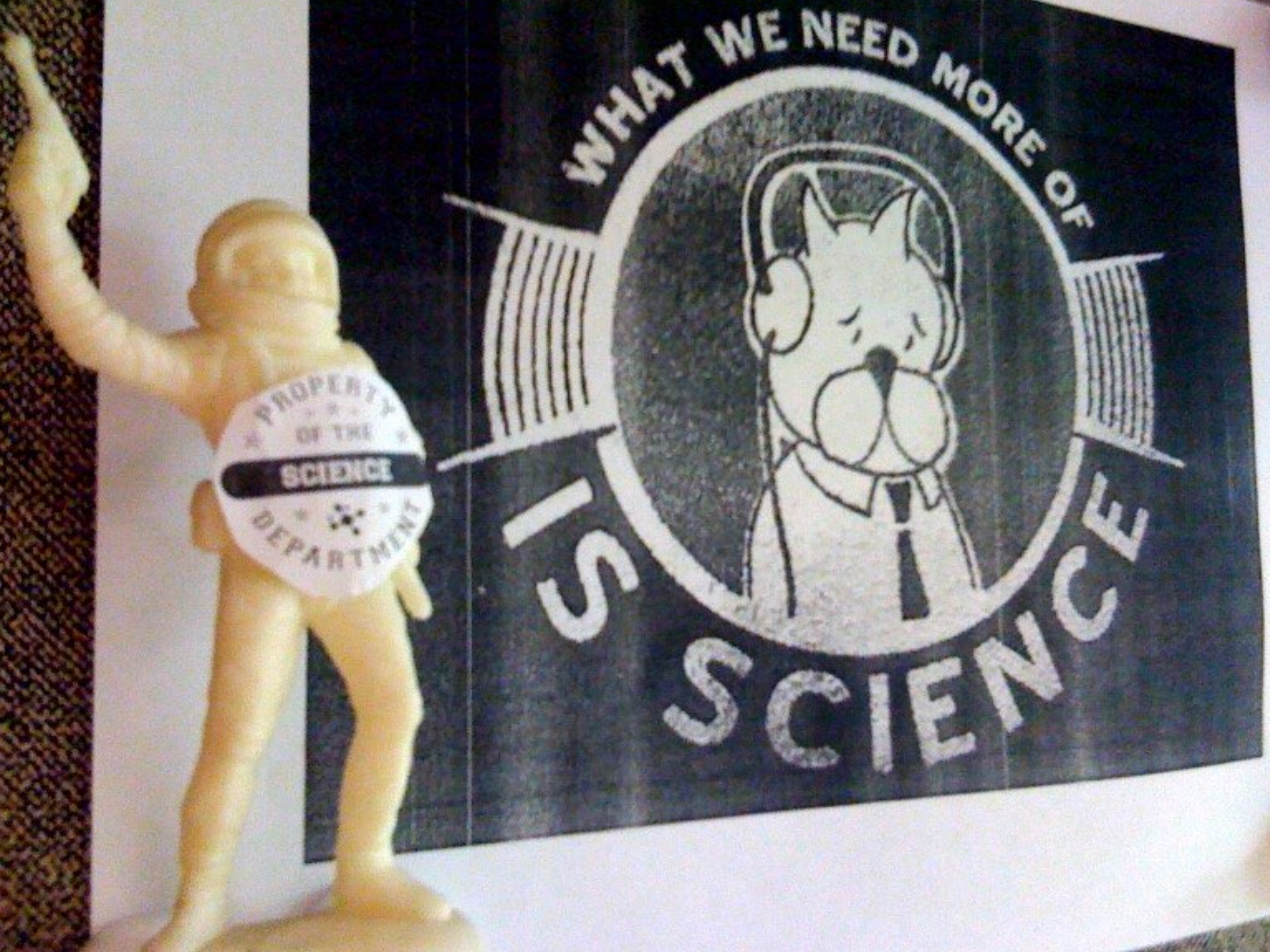
bram@atmire.com

@LuytenBram



ATMIRE

www.atmire.com



WHAT WE NEED MORE OF



U.S. SCIENCE







But first ...

a spoiler



Open Access

accelerates scientific progress



Communicating results

How fast are we going today?

NEWSSTAND



Fast forward to today



Publishers make content available for free, instantly

THE LANCET

Log in

Register

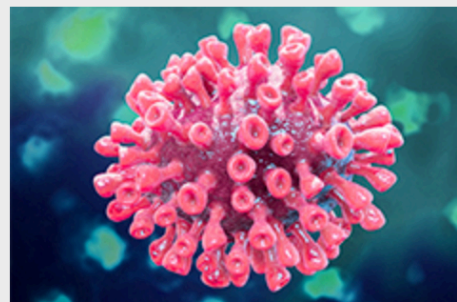
Subscribe

Claim



2019-nCoV Resource Centre

To assist health workers and researchers working under challenging conditions to bring this outbreak to a close, *The Lancet* has created a Coronavirus Resource Centre. This resource brings together new 2019 novel coronavirus (2019-nCoV) content from across *The Lancet* journals as it is published.



All content listed on this page is free to access.

Useful links

- [WHO: Novel Coronavirus \(2019-nCoV\)](#)
- [Elsevier's Novel Coronavirus Information Center](#)

Media queries

For media enquiries in relation to content published below, please contact pressoffice@lancet.com.

Infographics

Shenzhen-based family visit infected relatives in Wuhan, and return with illness

Latest content

A new analysis, published in *The Lancet*, includes 99 patients with laboratory-confirmed 2019 novel coronavirus (2019-nCoV) who were transferred to

"All content listed on this page is free to access"

<https://www.thelancet.com/coronavirus>

Publishers make content available for free, instantly



ELSEVIER

About Elsevier

Products & Solutions

Services

Shop & Discover

Search 



Connect

View by community or topic 

Home > Elsevier Connect > Novel Coronavirus In...

Novel Coronavirus Information Center

Elsevier's **free** health and medical research on novel coronavirus (2019-nCoV)

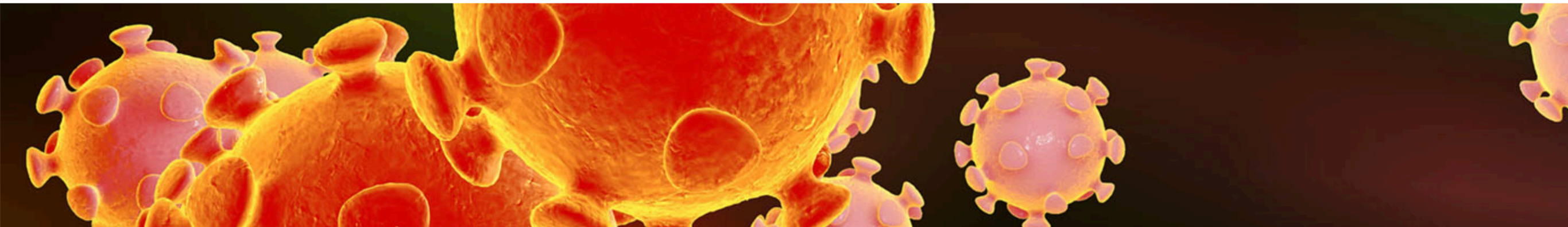
Expert guidance

Clinical Solutions

中文资源 (Chinese-language)

Research

Related resources



<https://www.elsevier.com/connect/coronavirus-information-center>

Problem solved?





Get Access

Share

Export



Clinical Oncology

Volume 32, Issue 2, February 2020, Pages 101-109



Original Article

Assessment of Intrafraction Motion of the Urinary Bladder Using Magnetic Resonance Imaging (cineMRI)

C. Wilson †✉, E. Mosesvili †, M. Tacey †‡, I. Quin §, N. Lawrentschuk †, D. Bolton †, D.L. Joon †, M. Chao †, T. Dunshea †¶, T. Kron ||, F. Foroudi †

Show more

<https://doi.org/10.1016/j.clon.2019.09.056>

[Get rights and content](#)



Get Access

Share

Export

Choose an option to locate/access this article:

Check if you have access through your login credentials or your institution.

or

Purchase PDF \$35.95

Check Access

Bladder Using Magnetic Resonance Imaging (cineMRI)

C. Wilson †[✉], E. Moseshvili †, M. Tacey †‡, I. Quin §, N. Lawrentschuk †, D. Bolton †, D.L. Joon †, M. Chao †, T. Dunshea †¶, T. Kron ||, F. Foroudi †

Show more

<https://doi.org/10.1016/j.clon.2019.09.056>

[Get rights and content](#)



Clinical Oncology

Supports open access

Articles in press

Latest issue

Article collections

All issues

Submit your article ↗

Search in this journal



Volume 32, Issue 2

Pages 69-132, e39-e86 (February 2020)

Download full issue

[< Previous vol/issue](#)

[Next vol/issue >](#)

Actions for selected articles

[Select all](#) / [Deselect all](#)

Download PDFs

Export citations

☐ Show all article previews

Receive an update when the latest issues in this journal are published

Sign in to set up alerts

Science in Focus

"Authors may choose to publish open access by **paying an article publishing charge.**"

Bladder Cancer

Original Articles

☐ Research article ● Open access

The Intensity-Modulated Pelvic Node and Bladder Radiotherapy (IMPART) Trial: A Phase II Single-Centre Prospective Study

M.P. Tan, V. Harris, K. Warren-Oseni, F. McDonald, ... R.A. Huddart

Pages 93-100



Download PDF

Article preview 

☐ Research article ○ Abstract only

Assessment of Intrafraction Motion of the Urinary Bladder Using Magnetic Resonance Imaging (cineMRI)

C. Wilson, E. Moseshvili, M. Tacey, I. Quin, ... F. Foroudi

Pages 101-109



Purchase PDF

Article preview 



35 Results for term "coronavirus"

Items/Page 10 ▼

Order by Best Match ▼



View Selected Citations (0)

+ Add All Citations

Potent binding of 2019 novel coronavirus spike protein by a SARS coronavirus-specific human monoclonal antibody

Xiaolong Tian, Cheng Li, Ailing Huang, Shuai Xia, Sicong Lu, Zhengli Shi, Lu Lu, Shibo Jiang, Zhenlin Yang, Yanling Wu, Tianlei Ying

bioRxiv 2020.01.28.923011; doi: <https://doi.org/10.1101/2020.01.28.923011>

+ Add to Selected Citations

Origin time and epidemic dynamics of the 2019 novel coronavirus

Chi Zhang, Mei Wang

bioRxiv 2020.01.25.919688; doi: <https://doi.org/10.1101/2020.01.25.919688>

+ Add to Selected Citations

Subject Areas

All Articles

Animal Behavior and Cognition

Biochemistry

Bioengineering

Bioinformatics

Biophysics

Plan S

Making full and immediate Open Access a reality

Why Plan S

Principles and Implementation



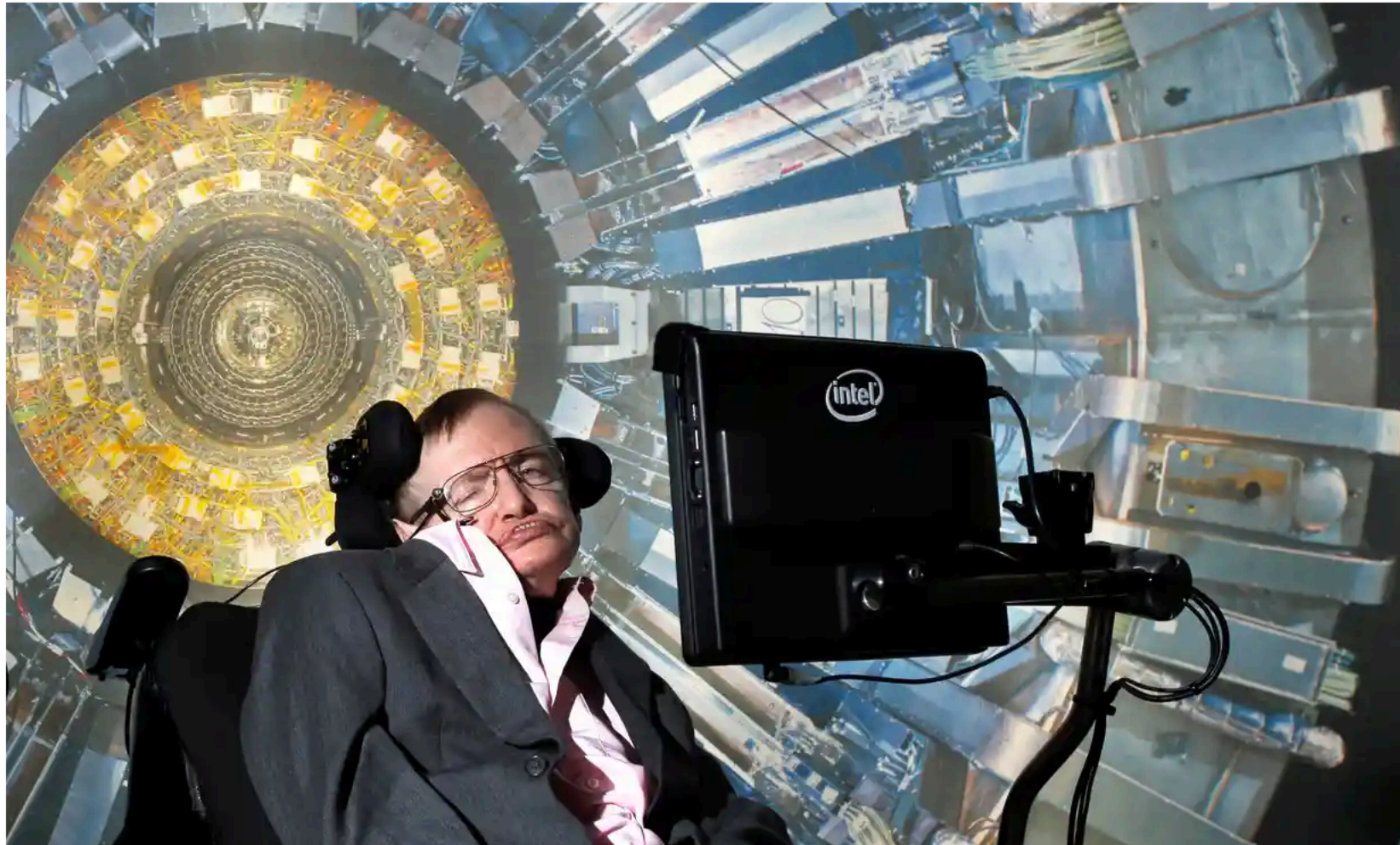
The role of institutions

and their repositories



Stephen Hawking's expanding universes thesis breaks the internet

Demand for 1966 PhD work, made freely available for the first time, crashes Cambridge's repository website



▲ Prof Stephen Hawking's 1966 doctoral thesis, *Properties of Expanding Universes*, has become the most-requested item in Apollo, Cambridge's open access repository. Photograph: Felix Clay/The Guardian

Stephen Hawking's 1966 doctoral thesis has broken the internet after becoming available to the general public for the first time.

Demand for the thesis, entitled *Properties of Expanding Universes*, was so great on Monday that it caused Cambridge University's repository site to go down. The site was still inaccessible at 7.30pm on Monday.




[Advanced search](#)

Properties of expanding universes

Browse

All of Apollo

- > [Communities & Collections](#)
- > [Authors](#)
- > [Titles](#)
- > [Keywords](#)
- > [Type](#)

This Collection

- > [Authors](#)
- > [Titles](#)
- > [Keywords](#)
- > [Type](#)

Statistics

- > [View Usage Statistics](#)



View / Open Files

- [Thesis - Colour High Resolution \(2017\) \(PDF, 32Mb\)](#)
- [Thesis - Original Grayscale \(2013, reduced size\) \(PDF, 12Mb\)](#)
- [Thesis - Original Grayscale \(2013\) \(PDF, 72Mb\)](#)

Authors

[Hawking, Stephen](#)

Advisors

Sciama, Dennis

Date

1966-03-15

Citation

Hawking, S. (1966). *Properties of expanding universes* (Doctoral thesis).
<https://doi.org/10.17863/CAM.11283>

Description

This thesis has been made openly available with the kind permission of Professor Stephen Hawking.

Abstract

Some implications and consequences of the expansion of the universe are examined. In Chapter 1 it is shown that this expansion creates grave difficulties for the Hoyle-Narlikar theory of gravitation. Chapter 2 deals with perturbations of an expanding homogeneous and isotropic universe. The conclusion is reached that galaxies cannot be formed as a result of the growth of perturbations that were initially small. The propagation and absorption of gravitational radiation is also investigated in this approximation. In Chapter 3 gravitational radiation in an expanding universe is examined by a method of asymptotic expansions. The 'peeling off' behaviour and the asymptotic group are derived. Chapter 4 deals with the occurrence of singularities in cosmological models. It is shown that a singularity is inevitable provided that certain very general conditions are satisfied.

Relationships

Alternative form(s):

<https://cudl.lib.cam.ac.uk/view/MS-PHD-05437>

Identifiers

PhD.5437

This record's DOI:

<https://doi.org/10.17863/CAM.11283>

<https://repository.cam.ac.uk>

Inequality and development

Global development is supported by

BILL & MELINDA
GATES foundation

About this content

Kate Hodal

@katehodal

Mon 20 Jan 2020 09.42 GMT



2,908

World's 22 richest men wealthier than all the women in Africa, study finds

Startling scale of inequality laid bare as Oxfam report highlights chronically undervalued nature of care work



▲ A teenager in Malawi hauls a bucket of water before school. Women in poor countries spend hours carrying water home from distant sources. Photograph: Helen H Richardson/Denver Post via Getty Images

The world's 22 **richest men** have more combined wealth than all 325 million women in Africa, according to a study.

Women and girls across the globe contribute an estimated £8.28tn (\$10.8tn) to the global economy with a total of 12.5bn hours a day of unpaid care work, a figure more than three times the worth of the global tech industry, claims an Oxfam report published on Monday ahead of the **World Economic Forum in Davos**.

The charity says women around the world, especially those living in poverty, do more than three-quarters of all unpaid care work, which is chronically undervalued and taken for granted by businesses and governments alike.

Advertisement

For Investment Professionals only



48% OF BELGIAN INVESTORS
WOULD INVEST IN RENEWABLE ENERGY.
BUT ONLY 6% WOULD
INVEST IN 'ESG'.



IS JARGON GETTING IN THE
WAY OF YOUR CLIENTS'
INVESTMENT DECISIONS?

M&G EUROPEAN
INVESTOR RESEARCH ►



Browse

All of Oxfam Digital Repository

[Communities](#)[Title](#)[Authors](#)[Publication date](#)[Types](#)[Series](#)[Publisher](#)[Subjects](#)[Keyword](#)[Country](#)

This Collection

[Title](#)[Authors](#)[Publication date](#)

Search



Time to Care: Unpaid and underpaid care work and the global inequality crisis

Export

**Name:**

bp-time-to-care-inequality-200 ...

Size:

2.581Mb

Format:

PDF

Description:

English report

Download

**Name:**

bp-time-to-care-inequality-200 ...

Size:

1.297Mb

Format:

PDF

Description:

English summary

Download

<https://oxfamilibrary.openrepository.com/>

The statistical properties of stars and their dependence on metallicity: the effects of opacity (dataset)

Bate, Matthew R.

Date: 29 April 2014


 <http://hdl.handle.net/10871/14881>

 **BATE2012.zip (ZIP, 4.174Gb)**

 **BATE2012_0176_0180.zip (ZIP, 17.51Gb)**

 **BATE2012_0181_0185.zip (ZIP, 17.56Gb)**

[View more](#)

 **Dataset**

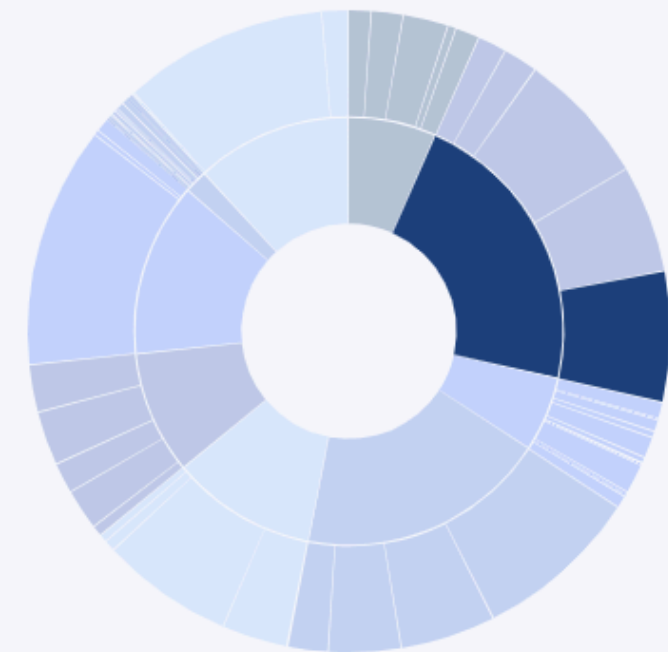
Publisher University of Exeter (dataset)
Oxford University Press (paper)

Related links <http://hdl.handle.net/10871/16537>

Abstract This is the dataset that was used to produce the paper published in MNRAS. It contains the output from each of the SPH simulations, including dump files and the scripts used to generate the figures for the paper.

[View full metadata](#)

[Show Statistical Information](#)



Physics and Astronomy
College of Engineering,
Mathematics and Physical
Sciences

Item views 953

Full item downloads 13,471

<https://ore.exeter.ac.uk/>

Browse

All of HZI

- Communities
- Title
- Authors
- Issue Date
- Submit Date
- Subjects
- Journal
- Types
- Subject (MeSH)

This Collection

- Title
- Authors
- Issue Date
- Submit Date
- Subjects

Search



Stability and Biological Activity of E. coli Derived Soluble and Precipitated Bone Morphogenetic Protein-2.

Export

Restricted Resource

Name:

Quaas et al.pdf

Embargo:

2020-11-20

Size:

1.123Mb

Format:

PDF

Description:

original manuscript

Download

Restricted Resource

Name:

supplementary information.pdf

Embargo:

2020-11-20

Size:

190.2Kb

Format:

PDF

Description:

supplementary information

Download

<https://repository.helmholtz-hzi.de/>

Browse

All of HZI

Communities

Title

Authors

Issue Date

Submit Date

Subjects

Journal

Types

Subject (MeSH)

This Collection

Title

Authors

Issue Date

Submit Date

Subjects

Search



Request a copy of the document

Users of this system, can login to view this document.

[Login](#)

Enter the following information to request a copy of the document from the responsible person.

Stability and Biological Activity of E. coli Derived Soluble and Precipitated Bone Morphogenetic Protein-2.

Name:

Your e-mail address:

This email address is used for sending the document.

Files:

- ☒ All files (of this document) in restricted access.
- ☐ Only The requested file.

Message:

Request copy



The best thing ?

No need to remember the urls to these sites !!!!

[Any time](#)[Since 2020](#)[Since 2019](#)[Since 2016](#)[Custom range...](#)

Properties of expanding universes

[S Hawking - 1966 - repository.cam.ac.uk](#)

Some implications and consequences of the expansion of the universe are examined. In Chapter 1 it is shown that this expansion creates grave difficulties for the Hoyle-Narlikar theory of gravitation. Chapter 2 deals with perturbations of an expanding homogeneous and ...

[☆](#) [🔖](#) [Cited by 14](#) [Related articles](#) [All 9 versions](#) [↗](#)[\[PDF\] cam.ac.uk](#)[Any time](#)[Since 2020](#)[Since 2019](#)[Since 2016](#)[Custom range...](#)[Sort by relevance](#)[Sort by date](#)

[PDF] Time to Care: Unpaid and underpaid care work and the global inequality crisis

[M Lawson, A Parvez Butt, R Harvey, D Sarosi... - 2020 - oxfamilibrary.openrepository.com](#)

La desigualdad económica está fuera de control. En 2019, los 2153 milmillonarios que hay en el mundo poseían más riqueza que 4600 millones de personas. Esta enorme brecha es consecuencia de un sistema económico fallido y sexista que valora más la riqueza de una élite privilegiada, en su mayoría hombres, que los miles de millones de horas del esencial trabajo de cuidados no remunerado o mal remunerado que llevan a cabo fundamentalmente mujeres y niñas en todo el mundo. Cuidar de los demás, cocinar, limpiar ...

[☆](#) [🔖](#) [↗](#)[\[PDF\] openrepository.com](#)



DSPACE



Success factors?



Localization support

MIT License

Documentation

Meritocracy

Very specific software scope

Registered service provider program



2002 - JSPUI

DSpace at MIT: Item 1721.1/721 - Mozilla

Back Forward Reload Stop <https://dspace.mit.edu/handle/1721.1/721> Search Print

DSpace™ [About DSpace](#) MIT Libraries

Search DSpace: [Go](#) [Advanced Search](#)

[Home](#)

Browse

- [Communities & Collections](#)
- [Titles](#)
- [Authors](#)
- [By Date](#)

Sign on to:

- [Receive email updates](#)
- [My DSpace](#) authorized users
- [Edit Profile](#)
- [Help](#)
- [About DSpace](#)

[DSpace at MIT](#) >
[Center for Technology, Policy, and Industrial Development \(CTPID\)](#) >
[Lean Sustainment Initiative](#) >

Please use this identifier to cite or link to this item: <http://hdl.handle.net/1721.1/721>

Title: Sustainment of Capital Assets
Authors: Harris, Wesley
Keywords: sustainment
lean sustainment initiative
capital assets
Caribbean Academy of Sciences
lean air
defense aircraft
Issue Date: 11-Jun-2002
URI: <http://hdl.handle.net/1721.1/721>
Appears in Collections: [Lean Sustainment Initiative](#)

Files in This Item:

File	Description	Size	Format	
CAS.ppt	powerpoint version	1386Kb	Microsoft Powerpoint	View/Open
cas.pdf	pdf version	1673Kb	Adobe PDF	View/Open

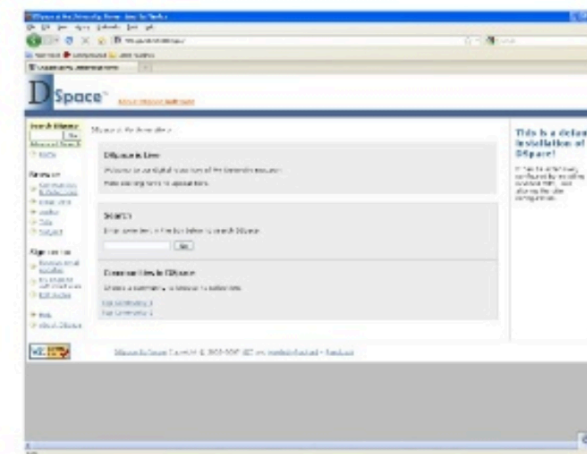
[Show full item record](#)

2007 - XMLUI Contributed

Manakin vs JSPUI

JSPUI (Java Server Pages)

- Difficult to extend
- Monolithic interface



XMLUI (Manakin Framework)

- Modular design
- Multiple interface
- Metadata in native formats



2020 - XMLUI

DSpace Demo Repository

Welcome to the DSpace.org demonstration/sample repository (Manakin / XMLUI interface)!

This repository is currently running on **DSpace version 6.3**, with the following extra features enabled:

- Mirage 2 responsive theme
- Authority Control (on Authors and Publishers) in Submission process
- Embargo in Submission process
- Item counts in communities/collections are visible
- Community/Collection/Item Statistics are publicly visible
- OpenSearch
- Google Scholar metadata
- SWORD Client
- [Mobile Theme](#)
- Elastic Search Statistics (login as admin and browse to any community/collection/item, then choose the last 'View Usage Statistics' link from the menu)
- ORCID integration
- PDF CoverPage generation

The following Demo Users are set up in the system (all users have password equal to the lowercase name of this software):

- Demo Site Administrator = dspacedemo+admin@gmail.com
- Demo Community Administrator = dspacedemo+commadmin@gmail.com
- Demo Collection Administrator = dspacedemo+colladmin@gmail.com
- Demo Submitter = dspacedemo+submit@gmail.com

WARNING: All content on this site resets automatically **every Saturday at 23:59 UTC**, at which point any changes are lost.



BROWSE

[All of DSpace](#)[Communities & Collections](#)[By Issue Date](#)[Authors](#)[Titles](#)[Subjects](#)

MY ACCOUNT

[Login](#)[Register](#)

DISCOVER

[Author](#)[Lewis, Stuart \(22\)](#)

2020 - JSPUI

[Home](#)[Browse ▾](#)[Help](#)[Sign on to: ▾](#) [Language ▾](#)**DSPACE**

DSpace JSPUI

DSpace preserves and enables easy and open access to all types of digital content including text, images, moving images, mpegs and data sets

[Learn More](#)

DSpace Demo Repository

Welcome to the DSpace.org demonstration/sample repository JSPUI interface

This repository is currently running DSpace version 6.3

WARNING: All content on this site resets automatically **every Saturday at 23:59 UTC**, at which point any changes are lost.

DSpace 7 Angular UI



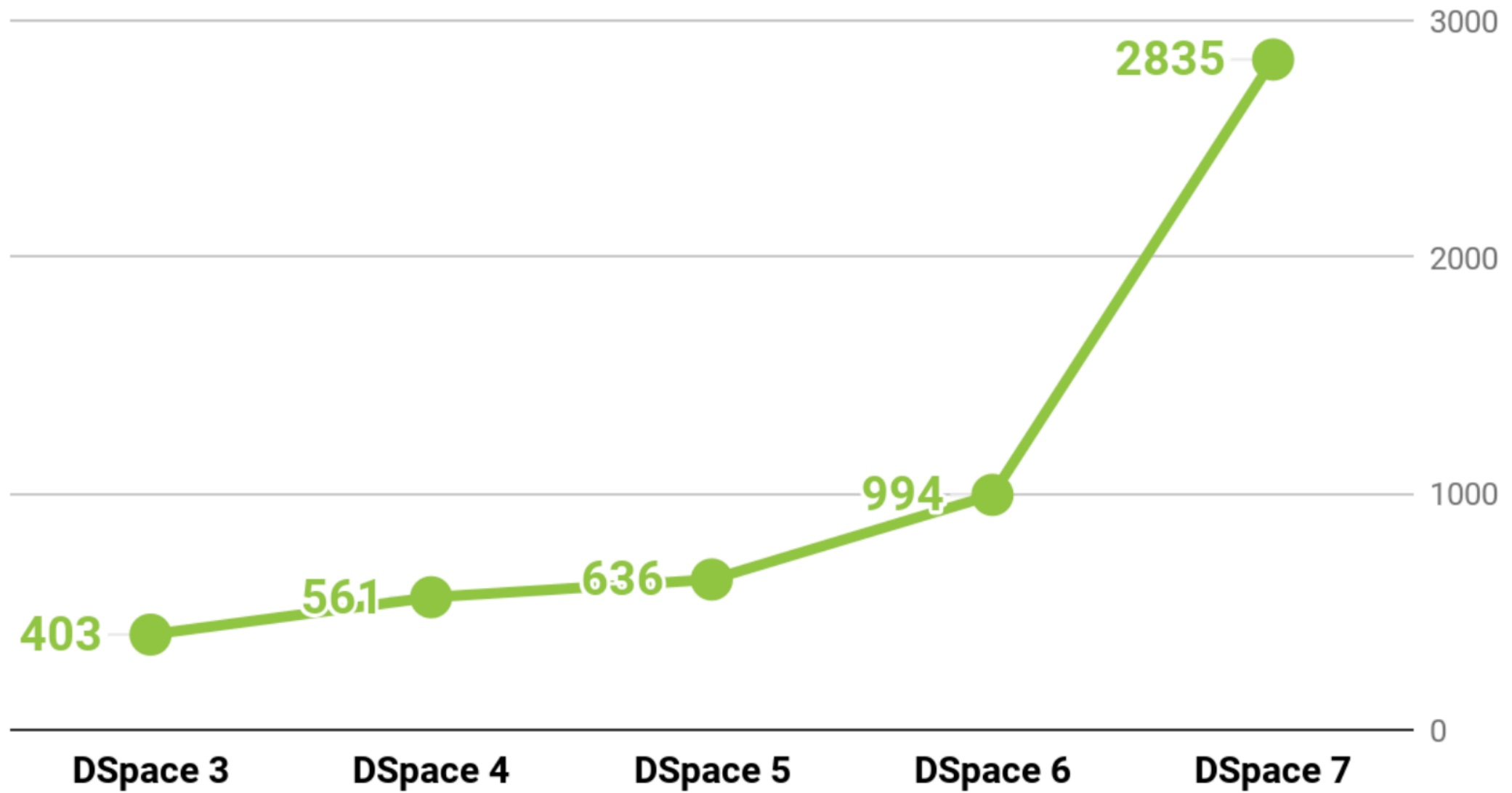
Challenges

Reliance on legacy stack

Community split in 2 UI camps

- 2016 UI Prototype challenge
- 2017 Back-end refactoring
- 2018 First DSpace 7 prototype
- 2019 Preview release
- 2020 7.0 - fingers crossed !!!

of Code Commits per Major Release



[Video link](#)

Search Demo



Filters

Author

☒ Simmons, Cameron

Date

1998 - 1999

2

2000 - 2009

5

2010 - 2012

11

Has files ▾

Item Type ▾

Search DSpace ▾

Search

Author: Simmons, Cameron ×

Start Date: 1998 ×

End Date: 2012 ×

Search Results

Now showing 1 - 10 of 31

Publication

The Diagnostic Sensitivity of Dengue Rapid **Test** Assays Is Significantly Enhanced by Using a Combined Antigen and Antibody **Testing** Approach

(2011-06-01) Simmons, Cameron

BACKGROUND: Serological **tests** for IgM and IgG are routinely used in clinical laboratories for the rapid diagnosis of dengue and can differentiate between primary and secondary infections. Dengue virus non-structural protein 1 (NS1) has been... Rapid **test** for NS1 and determine if it can improve diagnostic sensitivity when used in combination with a commercial

Publication

Comparison of two dengue NS1 rapid **tests** for sensitivity, specificity and relationship to viraemia and antibody responses

(2010-05-28) Simmons, Cameron

BACKGROUND: Dengue is a major public health problem in tropical and subtropical countries. Rapid and easy diagnosis of dengue can assist patient triage and care-management. The detection of DENV NS1 on rapid lateral flow **tests** offers a fast route... to a presumptive dengue diagnosis but careful evaluations are urgently needed as more and more people use

[Video link](#)

Image credits

Science - carmyarmyofme <https://flic.kr/p/7TdUAZ>

OAI Conference group picture

Day 2: technology - nickharris1 <https://flic.kr/p/defQrY>

newsstand - robzand <https://flic.kr/p/9cxLbM>

Repository screenshots courtesy of the respective repositories and their institutions





DIGITAL ACCESS TO
SCHOLARSHIP AT HARVARD

DASH.HARVARD.EDU



HARVARD LIBRARY
Office for Scholarly Communication

DASH Home



Browse

All of DASH

Communities & Collections
By Issue Date
Author
Title
Keyword
FAS Department

Submitters

Login
Quick submit
Waiver Generator

About

About DASH
DASH Stories
Featured Work
DASH FAQs
Accessibility
Terms of Use
Privacy Policy

Statistics

By Schools

Your Story Matters

stop slideshow

“I am looking for new approaches and information to teaching economics.
Lacking open access, I wouldn't have access to articles like this.”

Community College Instructor



What is DASH?

A central, open-access repository of research by members of the Harvard community.

Deposit Your Work



DASH enlarges the audience and impact of your work. Authors who deposit in DASH have access to on-demand metrics and receive monthly reports about their readership. Deposited works receive persistent URLs, are comprehensively indexed by search engines, including Google and Google Scholar, reach academic and non-academic readers who may not have access to the original publications, and are preserved by the Harvard Library.

Making your work open access in DASH is as simple as completing our [quick submit form](#). We also welcome bulk deposits and offer CV scraping services. Simply [contact OSC](#) if you are interested. OSC will do the legal legwork for all submissions.

The [OSC](#) is pleased to offer a robust suite of services to support you and your scholarship. Visit our [For Authors](#) page to learn more.

<https://dash.harvard.edu>



World Health
Organization

iris.
Institutional Repository
for Information Sharing

English ▾



Contact

Help

Search IRIS

Search

BROWSE

All of IRIS

Communities & Collections

By Issue Date

Authors

Titles

Subjects

DISCOVER

Author

World Health Organization (49811)

World Health Organization, Regional Of-
fice for the Eastern Mediterranean
(8942)

World Health Organization, Regional Of-
fice for South-East Asia (4847)

World Health Organization. Regional Of-
fice for the Western Pacific (2624)

Latest



Recomendaciones para la obtención de datos, el análisis y la elaboración de informes sobre indicadores antropométricos en niños menores de 5 años

Organización Mundial de la Salud; Fondo de las Naciones Unidas para la Infancia (UNICEF)
(Organización Mundial de la Salud, 2019)



Recommandations pour la collecte des données, leur analyse et la préparation des rapports sur les indicateurs anthropométriques chez les enfants âgés de moins de 5 ans

Organisation mondiale de la Santé; Fonds des Nations Unies pour l'enfance (UNICEF)
(Organisation mondiale de la Santé, 2019)

<https://apps.who.int/iris/>

**BROWSE**

Collections

Authors

Dates

Topics

Titles

AUTHOR PROFILES

View

SITE STATISTICS

Authors

Countries

Titles

FOCUS

Sub-Saharan Africa

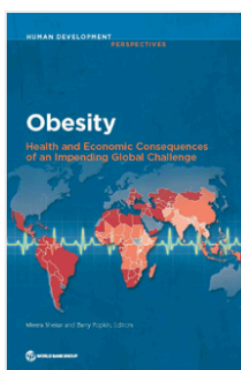
Publications

29,850 publications available

Featured

Latest

Trending



BOOK

Obesity : Health and Economic Consequences of an Impending Global Challenge

Shekar, Meera; Popkin, Barry

Obesity is a global ticking time-bomb with huge potential negative economic and health impacts, especially for the poor. As of 2016, an estimated 44 percent of adults (more than 2 billion) worldwide are overweight/obese, and over 70 percent of them live in low- or middle-income countries, dispelling the myth that obesi ...

2020

**Women, Business and the Law 2020**

World Bank

Women, Business and the Law 2020, the sixth edition in a series, analyzes laws and regulations affecting women's economic inclusion in 190 economies. The Women, Business and the Law Index, composed by eight indicators structured around women's interactions with the law as they begin, progress through and end their care ...

Jan 14, 2020

<https://openknowledge.worldbank.org/>

[DSpace@MIT Home](#)

DSpace@MIT

DSpace@MIT is a digital repository for MIT's research, including peer-reviewed articles, technical reports, working papers, theses, and more.

Search MIT

Search

[Advanced Search](#)

Browse by

[Communities & collections](#)
[Issue date](#)
[Authors](#)
[Titles](#)
[Subjects](#)

Browse collections

[MIT Open Access Articles](#)
[MIT Theses](#)
[Sloan School of Management](#)
[MIT OpenCourseWare](#)
[Computer Science and Artificial Intelligence Laboratory](#)
[Research Laboratory for Electronics](#)
[Laboratory for Information and Decision Systems](#)

[View all collections](#)

Get help

[Deposit to an existing collection](#)
[Deposit to the MIT Open Access Collection](#)
[Learn more about depositing work at DSpace@MIT](#)
[Get help with DSpace@MIT](#)

[My account](#)

BROWSE

All of DSpace

[Communities & Collections](#)[By Issue Date](#)[Authors](#)[Titles](#)[Subjects](#)

MY ACCOUNT

[Login](#)

STATISTICS

[OA Statistics](#)[Statistics by Country](#)[Statistics by Department](#)

<https://dspace.mit.edu>