



2 & 3 February 2019 - Brussels

8000+ hackers ■ 600+ lectures ■ lightning talks ■ devrooms ■ beer

Configuration: Do you prove yours?

Infra Management Room



@abrianceau



in/abrianceau



alexandre@rudder.io

How are the servers doing?

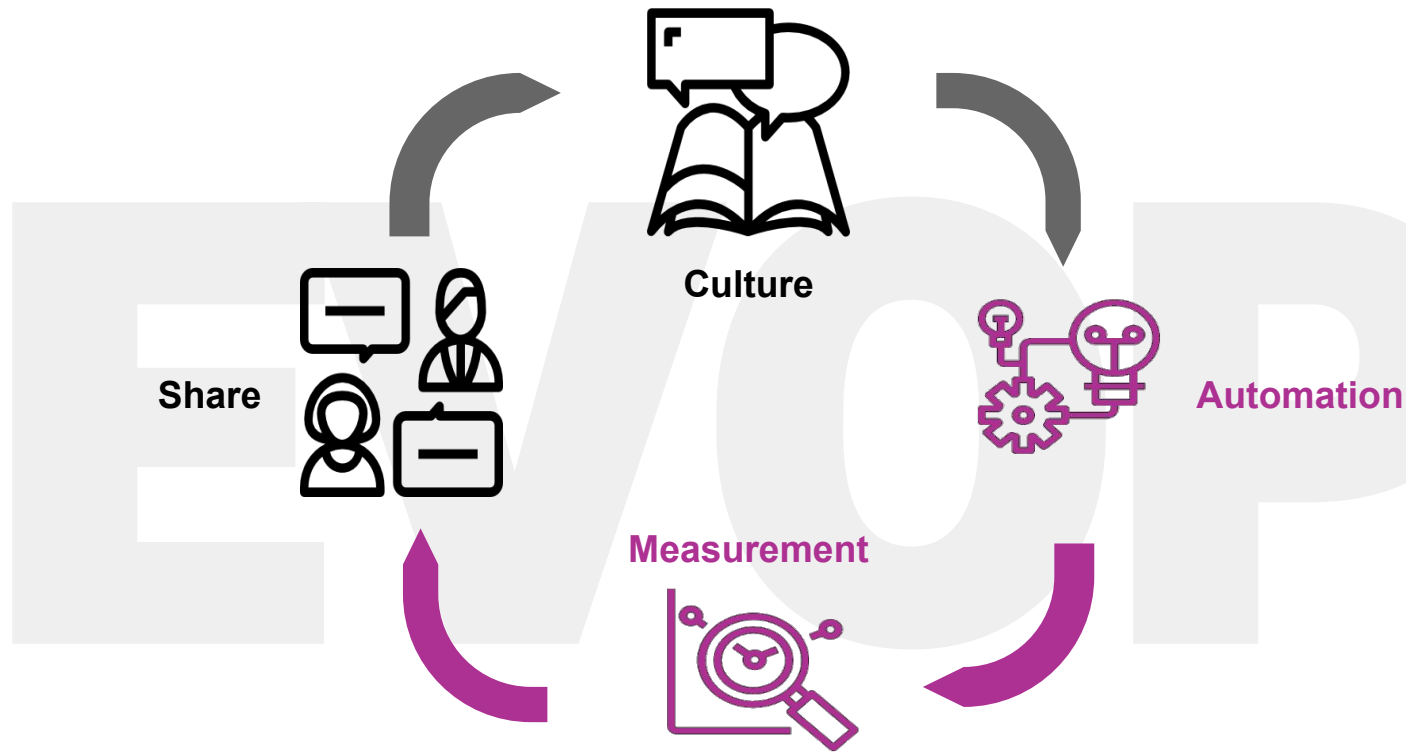
“

Configuration management is a systems engineering process for establishing and maintaining **consistency** of a product [...] throughout its life.

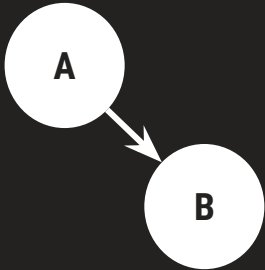


Configuration_management

How devops can help to understand?



Why we need Observability in Configuration Management?



Causality

trust and prove
configuration states



Perspective

provide insights
relevant to different needs



Agency

help teams find
the best levers
for their job

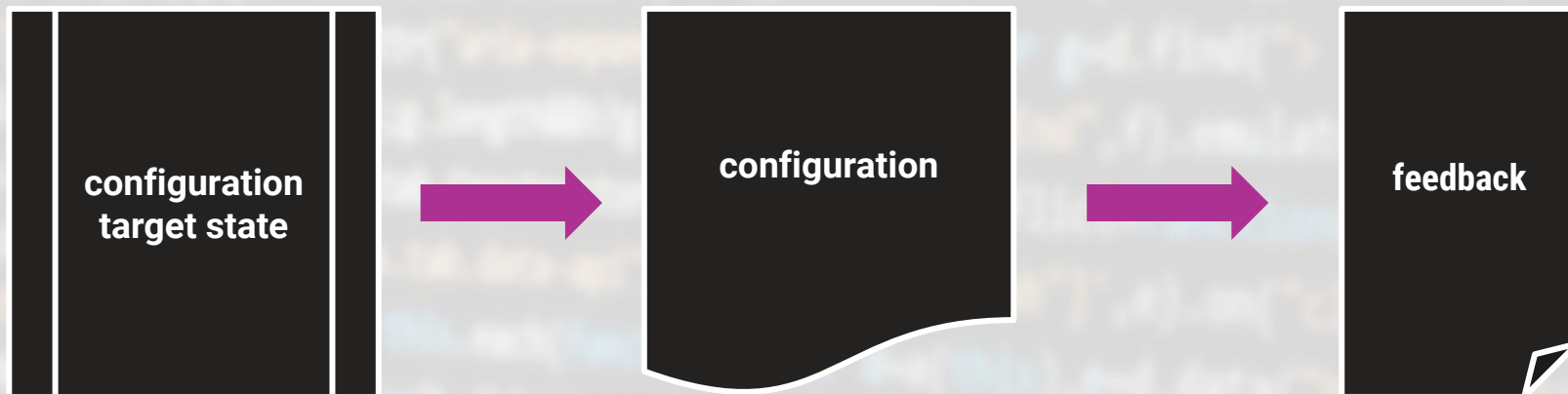


RUDDER

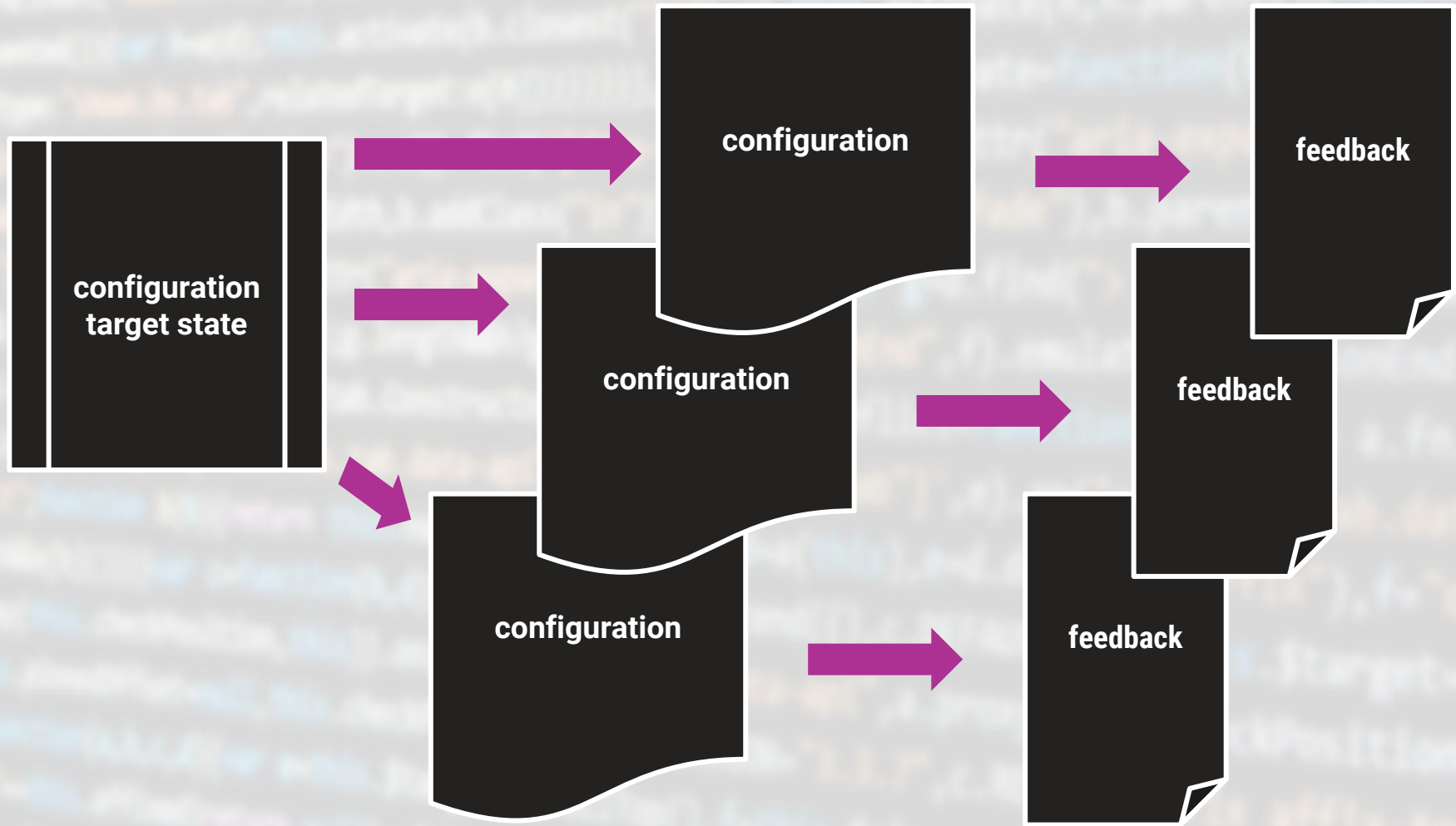
CONTINUOUS AUDITING & CONFIGURATION



Let's remember: What does configuration management do?



Let's remember: What does configuration management do?

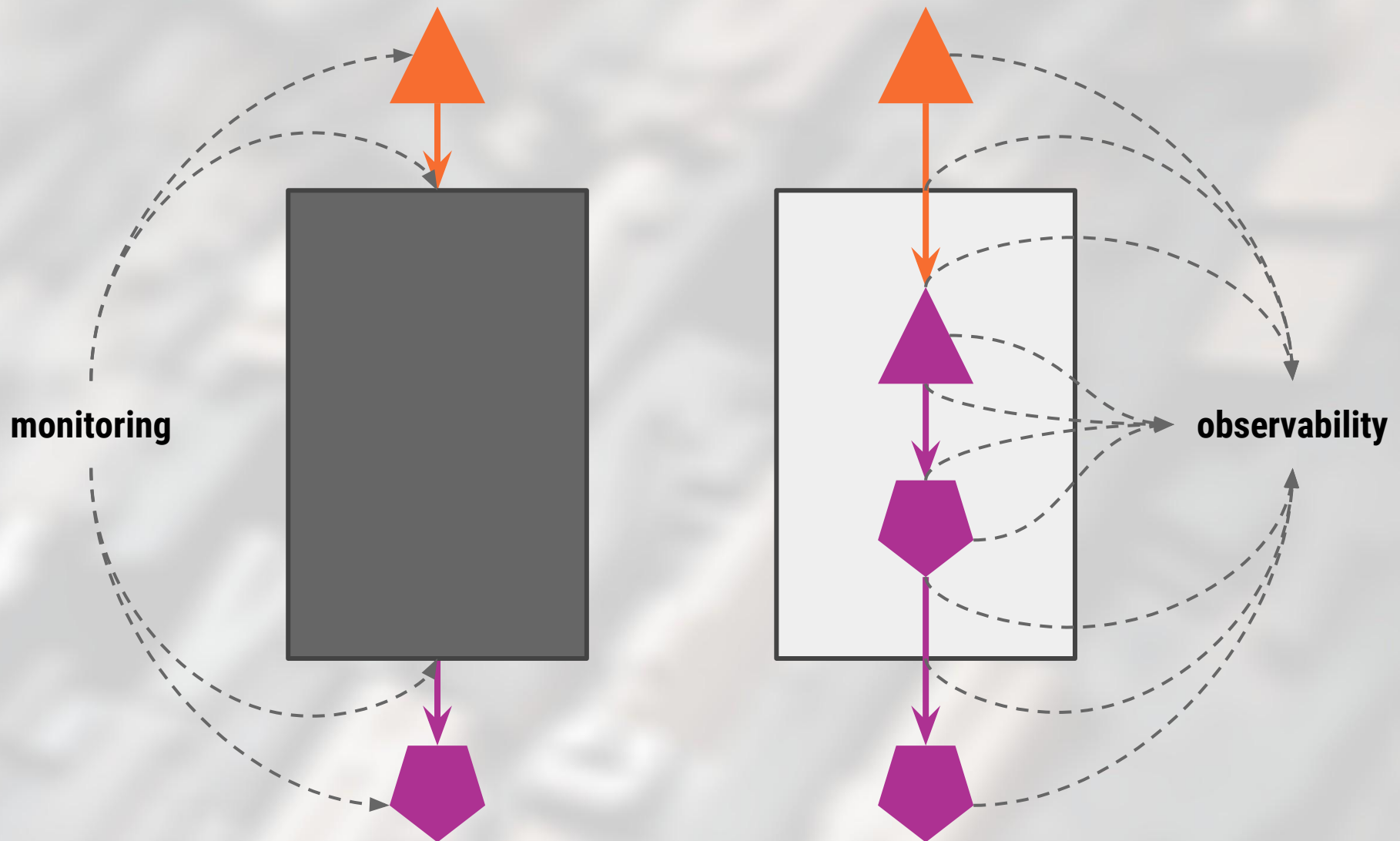


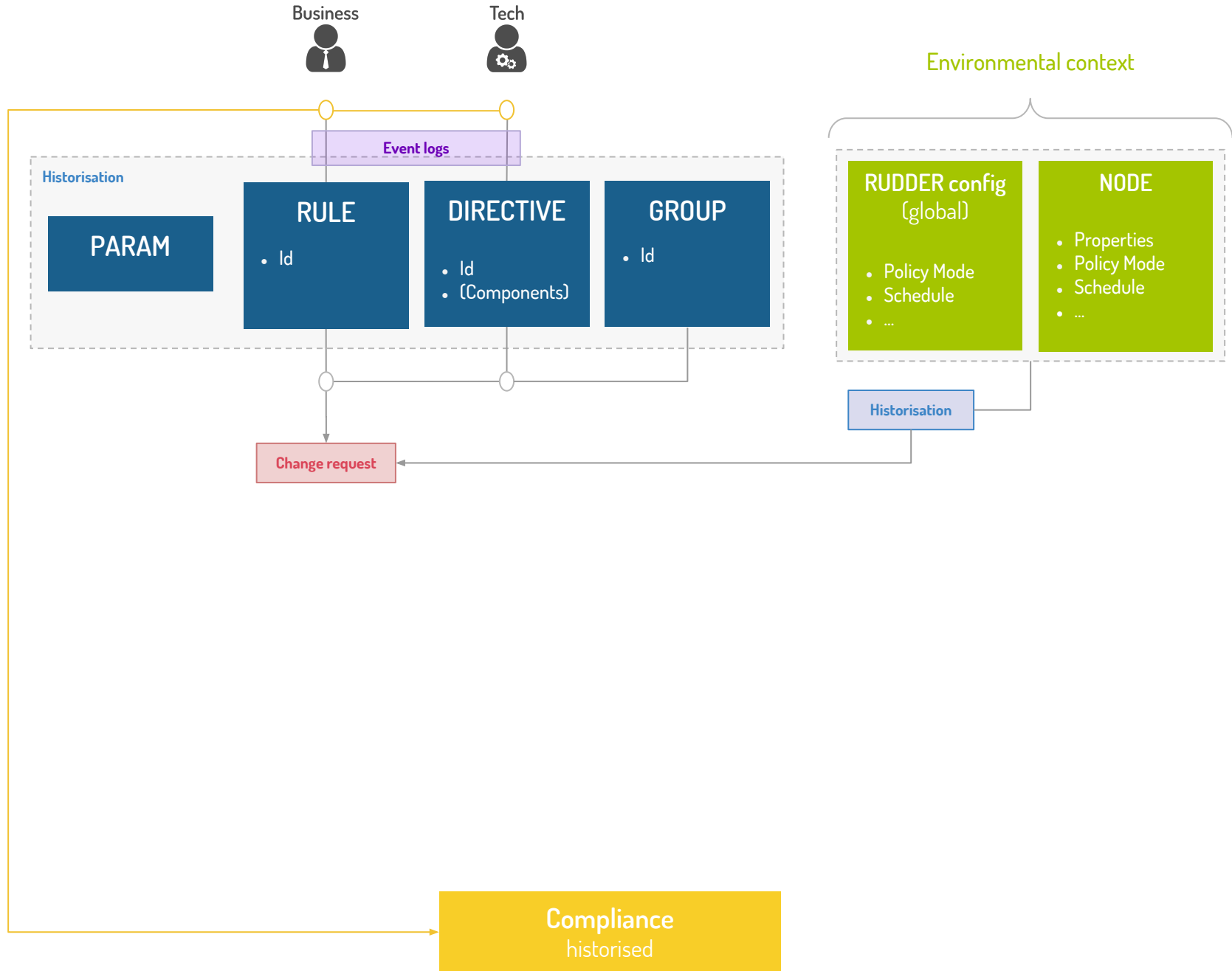
“

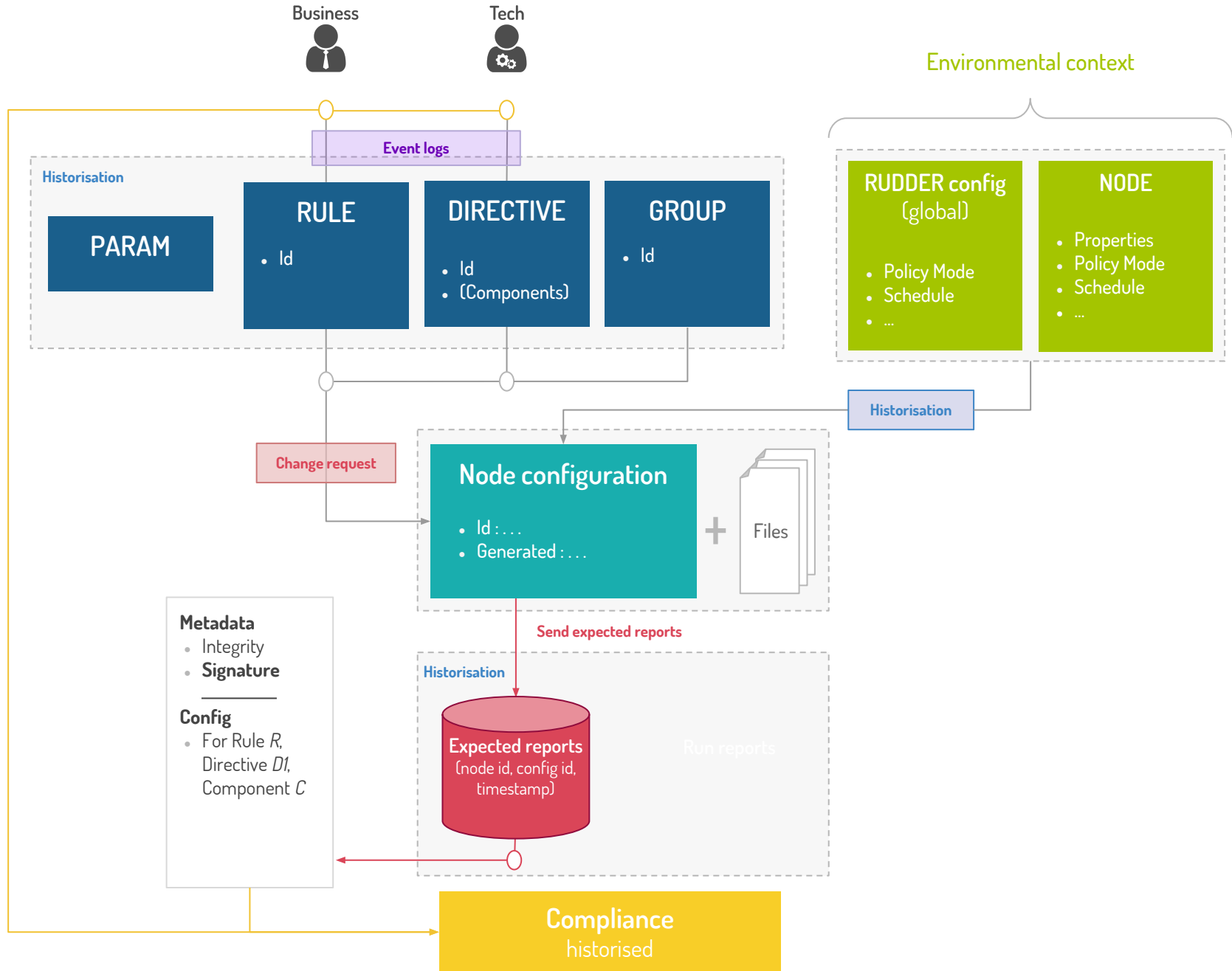
Observability is a measure of how well **internal states** of a system can be inferred from knowledge of its **external outputs**.

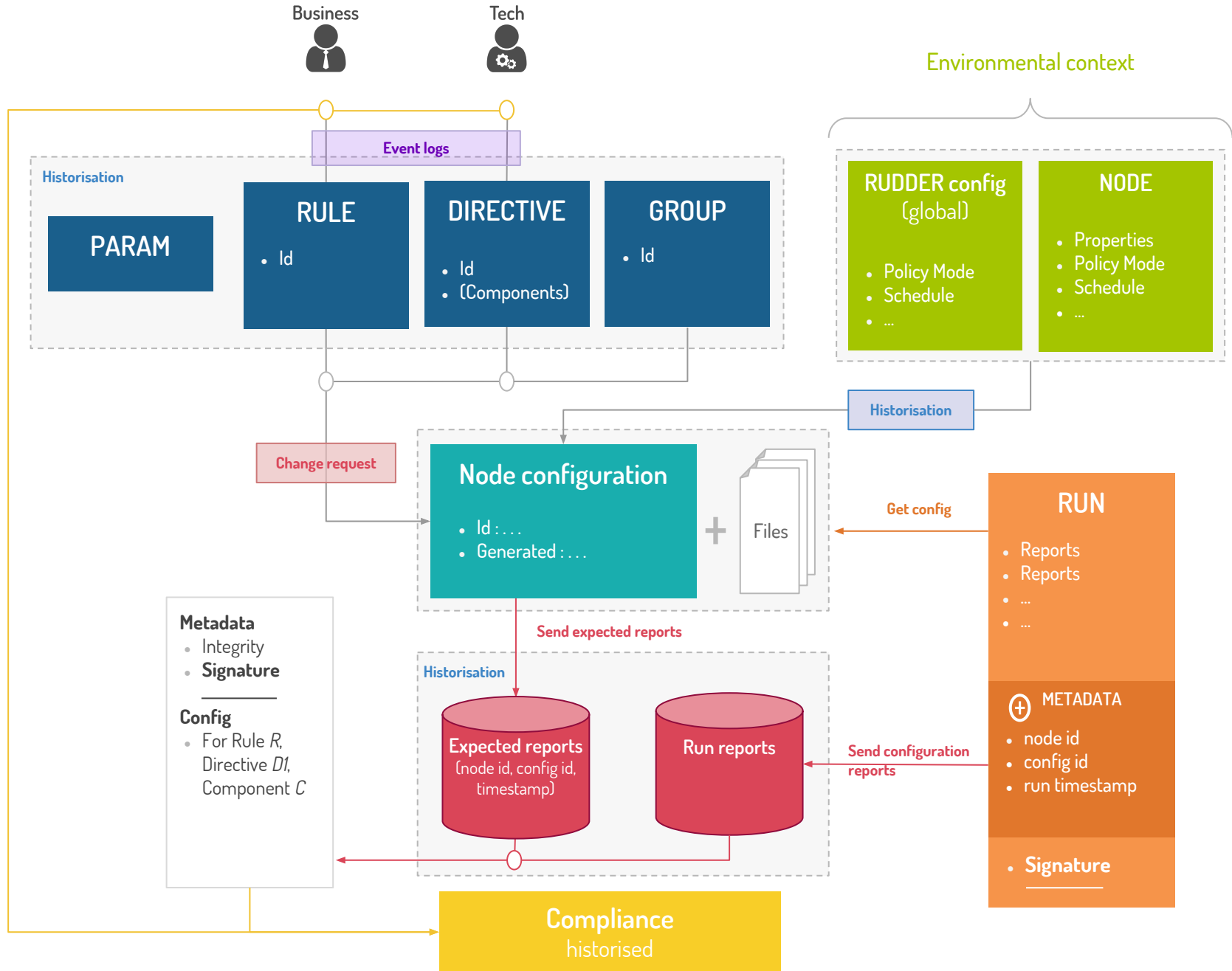
 Observability

Monitoring VS Observability: having a factual & deep insight









Impactful events category

Definition

of the target state

rules

node's groups
configurations

parameters

global
per nodes

environmental context

properties
policy mode...

Creation

of the configuration

tracing the configuration

generation process

OS specificity
template
variables...

predict configuration state

anticipation of any change
used to compare with the execution

Execution

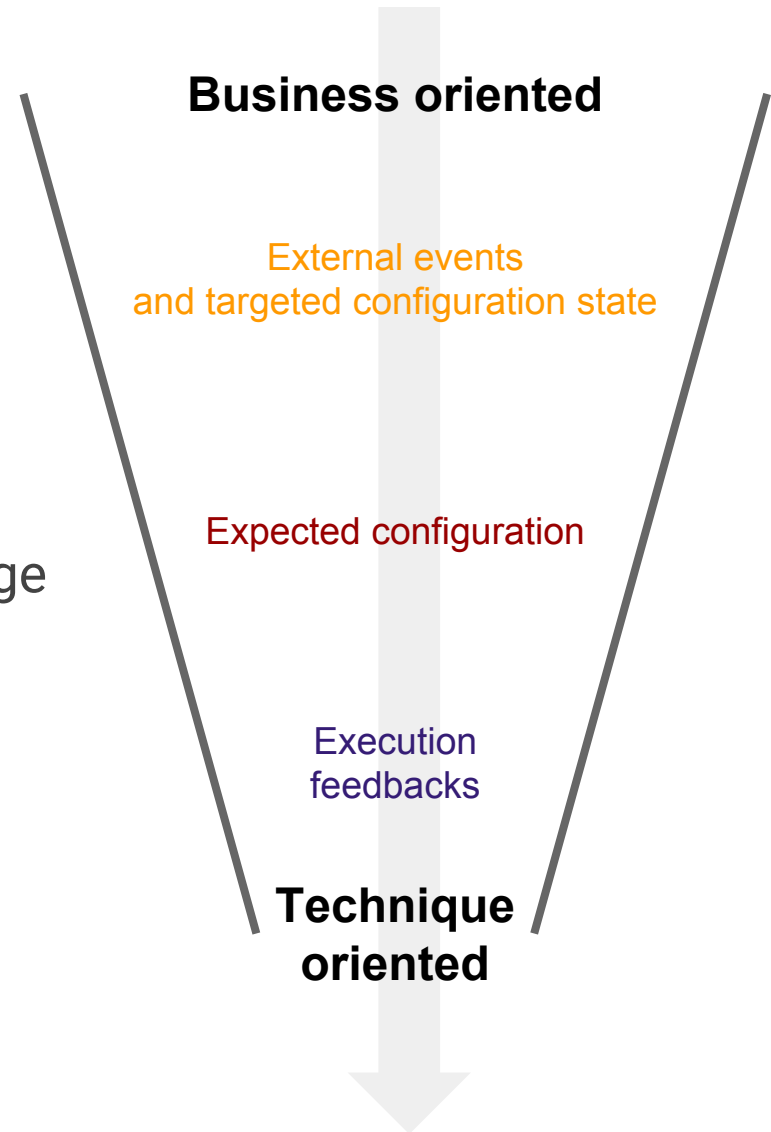
of the configuration

execution feedback

fine grained comparison with the
expectation
prevent any alteration

Are you sure that I didn't forget something ?

- And on the node itself ?
- Observability should be agnostic
 - Protocol normalization
- Beyond 1st level of external output usage
 - Data mining
 - Process mining and AI





2 & 3 February 2019 - Brussels

8000+ hackers ■ 600+ lectures ■ lightning talks ■ devrooms ■ beer

Configuration: Do you prove yours?

Infra Management Room



@abrianceau



in/abrianceau



alexandre@rudder.io