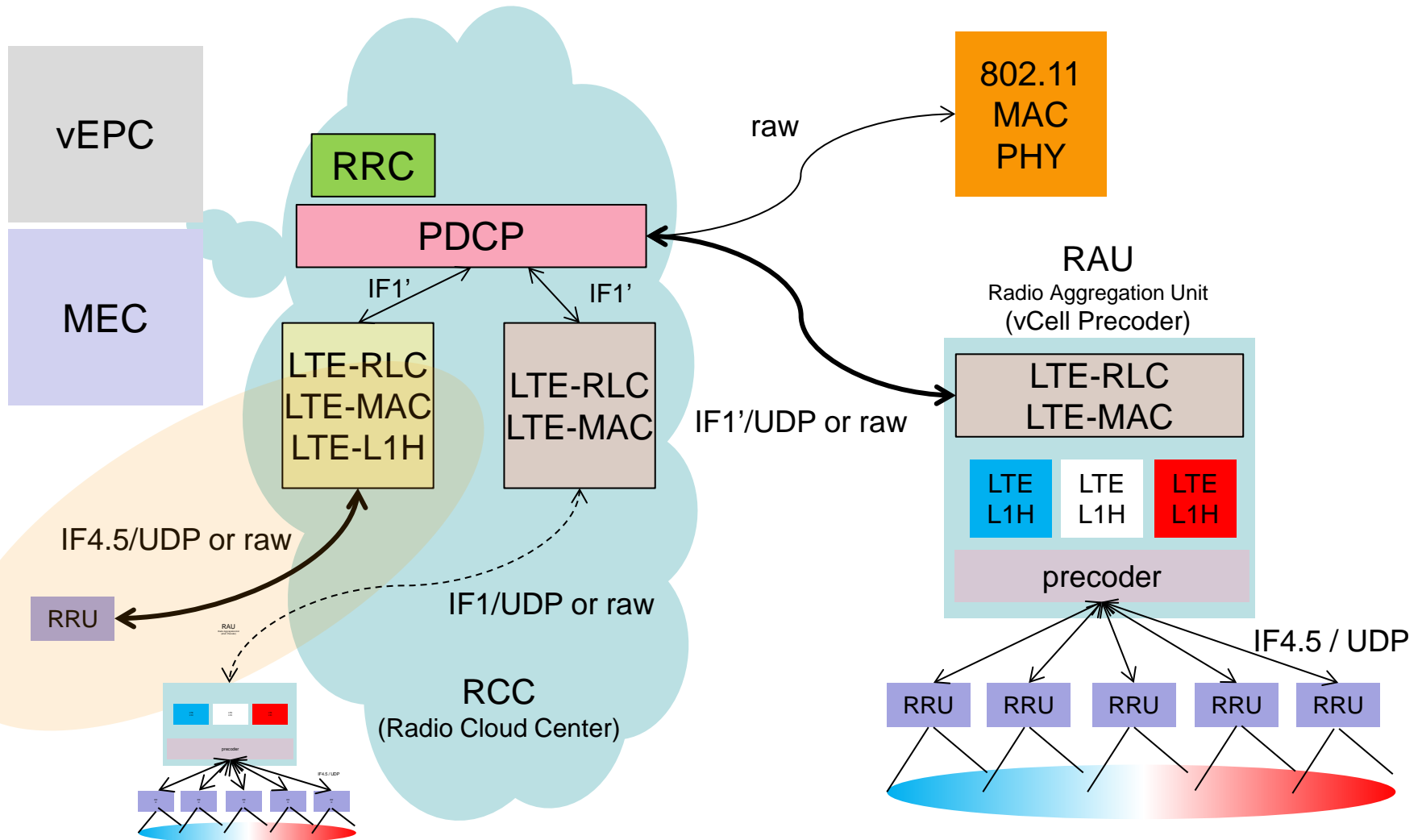
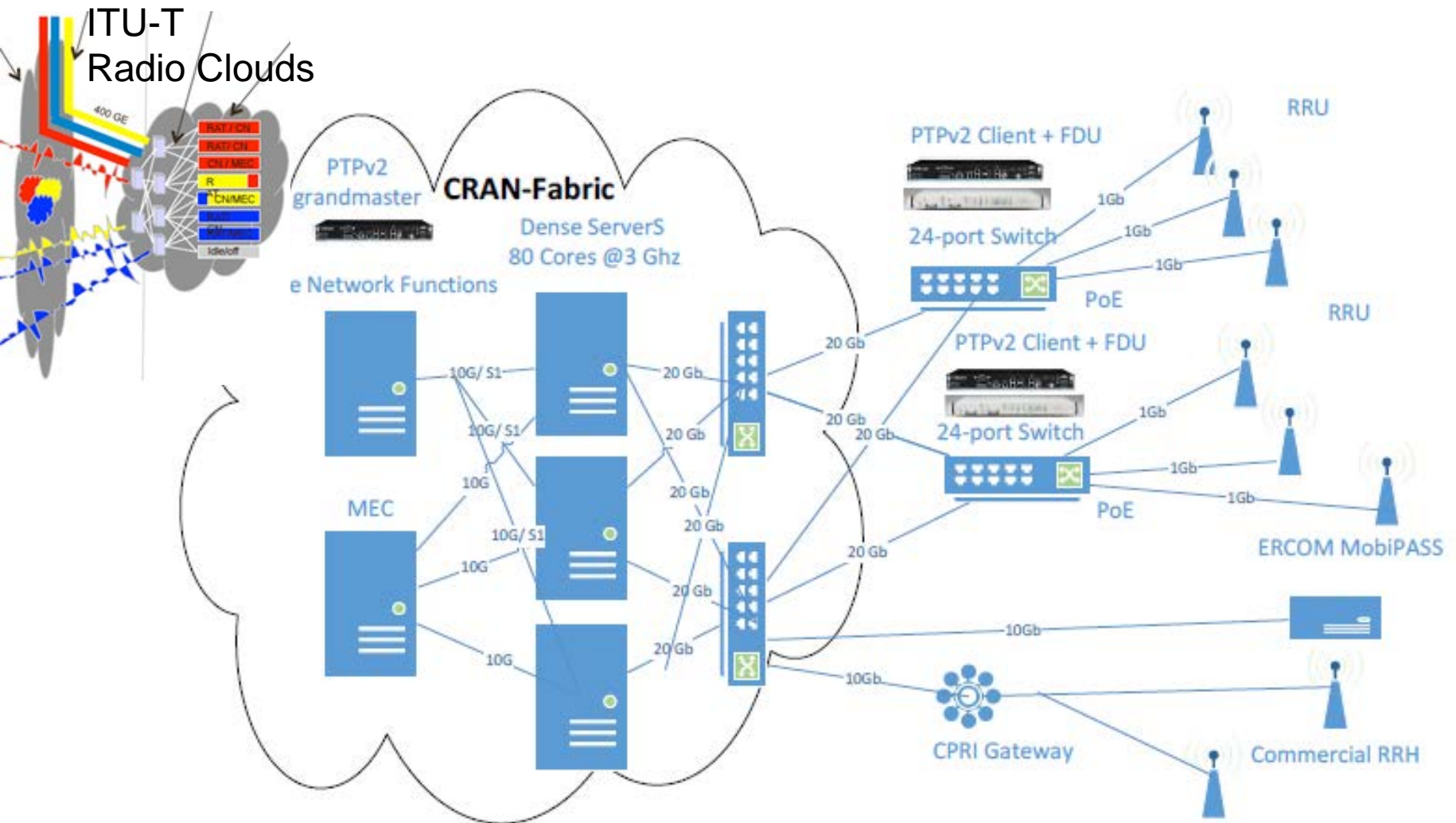


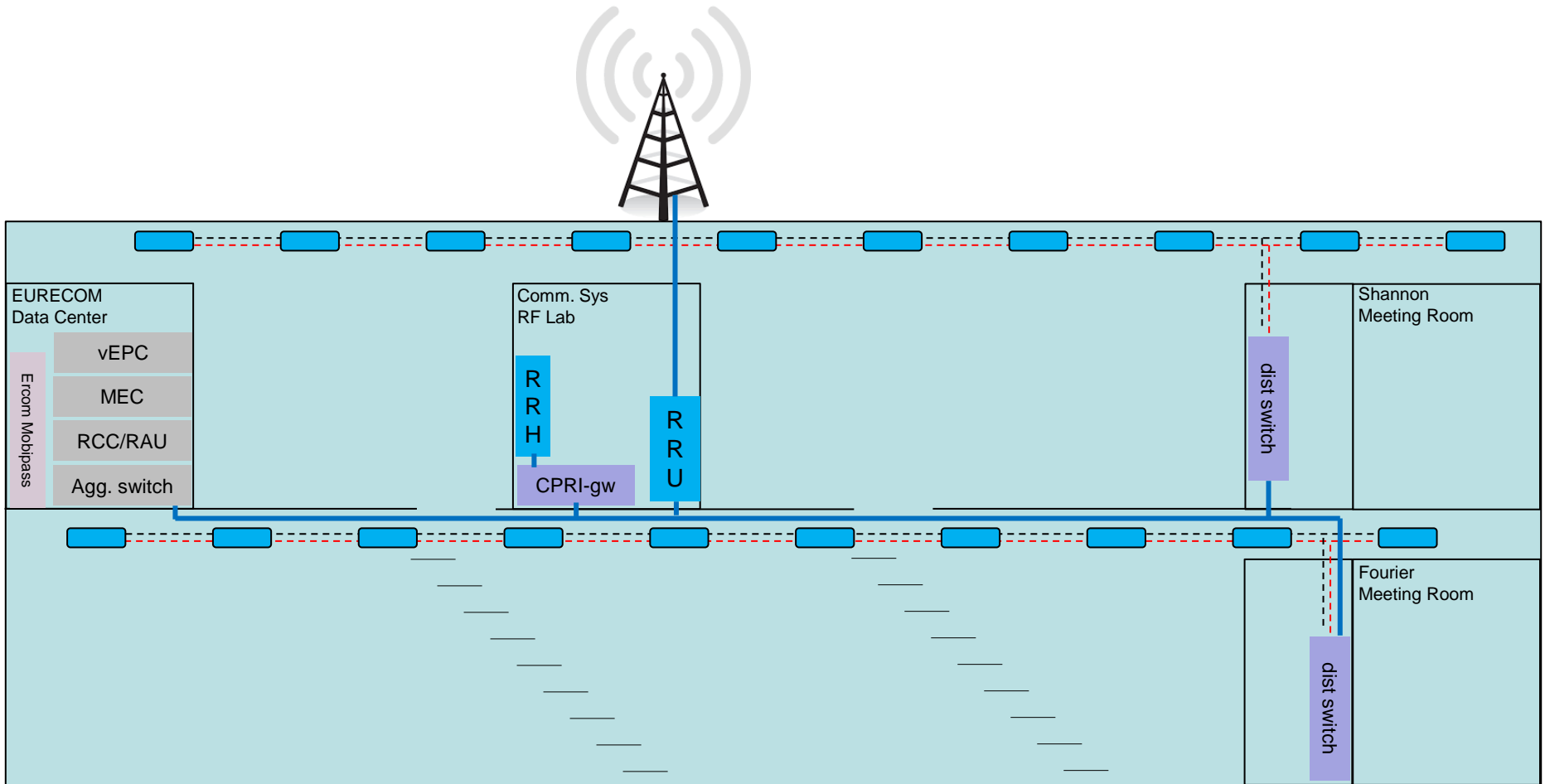
Splits under construction in OAI Community



Targeted Indoor/Outdoor deployment (SophiaTech Campus)



Indoor/Outdoor Deployment at EURECOM (Jan. 2017)



RRUs (Experimental)

- **Band 7(FDD),38 (TDD),42/43 (TDD)**
 - Up to 25 dBm (indoor, 10-15 dBm)
 - 20 MHz channel
 - 1 or 2 antennas per RRU (1 with USRP B200-mini)
 - <1000 euros / RRU
- **Pico-ITX form factor (100mm x 72 mm)**
 - Intel Atom E3845 or X7-8300, <10W TDP (UpBoard, Commell, etc.)
 - PoE from aggregation switch
 - 10 MHz reference from clock distribution (1588v2) at distribution switches
 - Over-the-air for frame synch between indoor RRU
 - 1GbE fronthaul RRU => MIMO/MU-MIMO done via multiple RRU

General OAI Info

- **Partial LimeSDR support (5/10 MHz FDD)**
 - Still testing with most recent board from Lime (v1.4)
- **eNB stabilization**
 - Full UL/DL up to 10 MHz bw (single codeword DL), full DL on 20MHz
 - Testing eNB scheduler with Ercom (EURECOM) and Aeroflex (testers
 - 2 codeword (TM3, TM4) very soon.
- **Significant UE development**
 - Full throughput with OAI/Amarisoft eNB up to 10 MHz
 - TM3/TM4/TM7 under test
- **openairCN**
 - Testing with commercial eNBs, robustification of control plane
 - Integration of dedicated bearer support (VoLTE)
 - Default to Osmocom GTPU module.
 - Integration of missing MME procedures coming very soon (community and internal development)