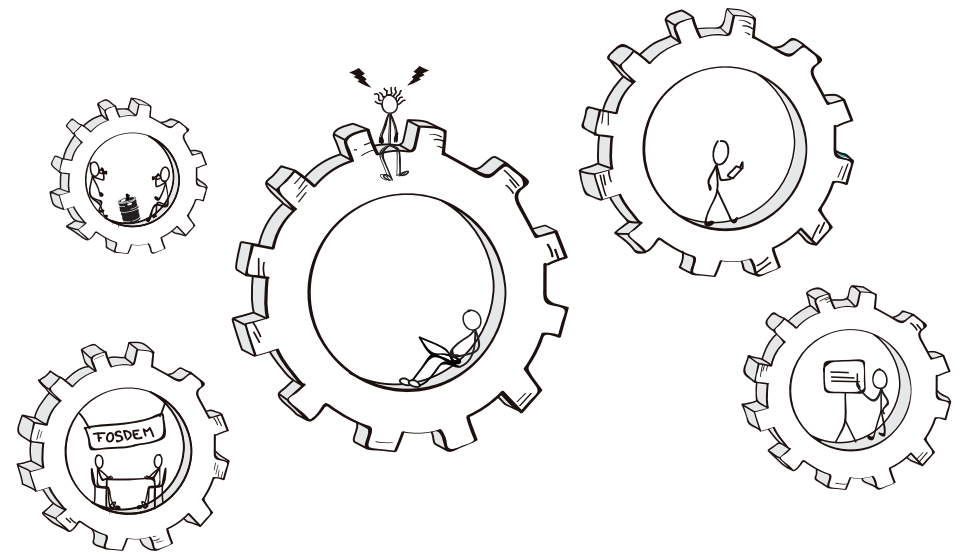


BRUSSELS 4 FEBRUARY - 5 FEBRUARY

**FOSDEM**<sup>17</sup>.org

**SEE YOU NEXT YEAR**



8000+ hackers • 600+ lectures • lightning talks • devrooms • beer

# WELCOME TO THE 17TH EDITION OF FOSDEM



## INFODESK

In this booklet, you will find useful information about the conference and the venue. If you have any questions, the volunteers at the infodesks will be happy to help you. The main infodesk is located in building K. A secondary infodesk can be found in building H. Staff and volunteers also roam around the campus and can be recognised by their bright yellow and orange T-shirts. There is a handy map on the back of this booklet, pointing out the locations of all buildings, rooms, and the infodesks.

## TABLE OF CONTENTS

05	General information
07	Getting around
08	Developer rooms
09	Stands
10-15	Floor plans
16-20	Sponsors
22	Surroundings

## CODE OF CONDUCT

In order to keep FOSDEM a fun, interesting and positive experience for everybody, we expect participants to follow the guidelines below.

FOSDEM aims to be a free, open and cooperative event. This means we expect collaboration from all the FOSDEM participants, and for everybody to behave respectfully towards all others, including those that are different or think differently from yourself.

Please be helpful, considerate, friendly and respectful towards all other participants and respect the environment. We don't condone harassment or offensive behaviour at our conference. We consider it against our values as human beings. We're voicing our strong, unequivocal support of exemplary behaviour by all participants.

Please remember that all FOSDEM participants are here by invitation of the conference organisers and the ULB. We expect all participants to follow this Code of Conduct during the conference and related events. This includes conference-related social events at off-site locations, and in related online communities and social media. Participants asked to stop any unacceptable behaviour are expected to comply immediately. Conference participants violating this Code of Conduct may be expelled from the conference and/or banned from formal participation in future events.

**Please bring any concerns to the immediate attention of our coordinating team, by phone +32 2 788 74 73 or email [conduct@fosdem.org](mailto:conduct@fosdem.org)**

**Thank you for your help in making FOSDEM a success and pleasant for all the people involved.**

## FIRST AID

A Red Cross first aid team is present during the weekend. This team is located behind the large auditorium on the second level of the K building.

**In an emergency, you can phone the infodesk on +32 2 788 74 74**

## FRINGE EVENTS

The FOSDEM Fringe consists of independent events involving free and open source software taking place in the days around the FOSDEM weekend. They are organised independently of FOSDEM.

The list of events can be found on the FOSDEM web site at [fosdem.org/2017/fringe](http://fosdem.org/2017/fringe)

## DONATIONS

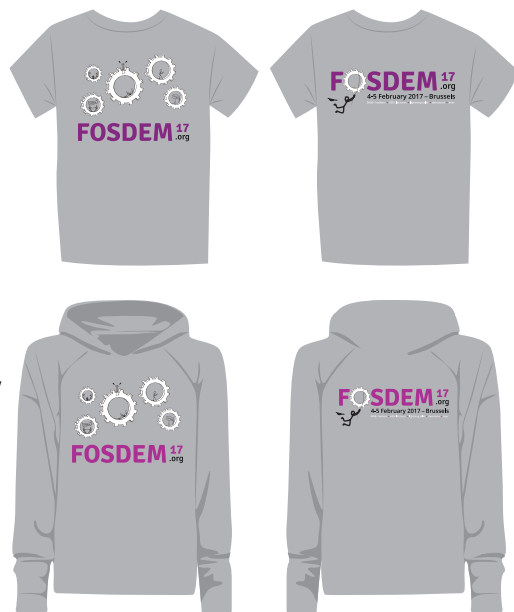
FOSDEM is free to attend. The event is organised by volunteers and funded entirely by sponsors, the sale of T-shirts, and individual donations.

In order to keep the event free, we kindly ask you to buy a T-shirt and/or to make a donation at one of the infodesks. Your donation supports FOSDEM 2017 and future editions. Depending on the amount you donate, you will receive one or more of the following along with our gratitude:

T-shirts are available in **male sizes**: S, M, L, XL, XXL.

In **female sizes**: S, M, L, XL, XXL.

It is not possible to get a refund for any reason. Donations are not tax-deductible.



	EUR 25,00	EUR 50,00	EUR 100,00
FOSDEM T-shirt	⚙️	⚙️	⚙️
FOSDEM Hoodie		⚙️	
O'Reilly pocket book		⚙️	
O'Reilly book			⚙️

## GENERAL INFORMATION

### NETWORK

Best-effort wireless network coverage is available everywhere on campus. To encourage you to support IPv6 in your applications our main "FOSDEM" ESSID does not support IPv4 natively. There are transition measures in place to reach IPv4-only hosts over IPv6 (DNS64 and NAT64). If you cannot live without native legacy IP connectivity for some reason, you can use the dual-stack "FOSDEM-ancient" ESSID. Please consider fixing your application or service though.

### ONLINE SCHEDULE

- ⚙️ The full conference schedule is available on our website: [fosdem.org/schedule/](https://fosdem.org/schedule/)
- ⚙️ There are third-party applications for just about every smartphone operating system. Check your respective app store/market or see the list at [fosdem.org/schedule/mobile/](https://fosdem.org/schedule/mobile/)

### ACCESSIBILITY

While we don't own the university campus and have little control over its accessibility, we have tried to find ways for developers with physical limitations to make the most of the event. All rooms except for **AW1.121** and **AW1.125** are accessible to wheelchair users. There are ramps and lifts.

The accessible routes and the location of the lifts are not always obvious but FOSDEM staff and volunteers will be happy to show you around. We reserve a limited number of seats at the front of both main track rooms for developers with hearing or visual impairments. We cannot make advance reservations in every developer room, but accommodations can usually be made on the spot.

### CLOAKROOM

Do you want to get rid of heavy bags, or are you tired of carrying your coat or umbrella around with you? Store them free of charge at our staffed cloakroom during the event. Simply follow the signs in the K building.

### LOST PROPERTY

Lost one of your precious belongings? Found something that looks like someone lost it? Please go to the infodesk in the K building for assistance.

#### LOST ON CAMPUS?

Try our experimental wayfinder at [nav.fosdem.org](https://nav.fosdem.org)

## CATERING

There are three places on the campus where you can get food and/or drinks (see the map at the back for the exact locations).

The cafeteria in the F building (between K and U) has comfortable seating and serves espresso, breakfast, sandwiches, beer and drinks during the event.

The food court has catering vans offering hot food including burgers, hot dogs, sandwiches, vegetarian wraps, and waffles. The food vans will be located on the square between the F and U buildings.

The second bar is located under Janson and offers sandwiches, drinks and loads of beer. Please try to stay quiet while in there. People in Janson can hear you. In the area surrounding the campus there are many other shops and restaurants where you can get food. See the surroundings map on page 22-23.

## CASH POINTS

There is a cash point on the campus, just past the main bar near the food stands, but experience shows that it runs out of cash quickly during FOSDEM. An alternative cash point can be found at 466, Chaussée de Boondael. To get there, leave the campus towards where the buses and trams stop, and continue straight ahead until the third roundabout and turn left there. You will find the cash point on the left side of the street.

## DO US A FAVOUR...

### GARBAGE & GLASS

Please try to keep the campus clean! Throw your garbage into the bins. If you see a full bin, please let staff, volunteers, or infodesk know.

Glass bottles should be put in the boxes located near some bins or in the designated container near the lower level of the H building. If you see people scavenging bottles, please report them to security, staff, volunteers, or infodesk immediately.

### CLEANUP

After FOSDEM is over, we will need to clean up, and quickly. We would greatly appreciate your help. This can be as simple as helping stands carry their equipment, grabbing a broom and cleaning the floors, or lend a hand collecting all of FOSDEM's gear. Simply talk to staff, volunteers, or infodesk.

### FEEDBACK

How are we doing? Are you enjoying this edition of FOSDEM? Is there anything we can do to make future events better? Please take a minute to fill in our feedback form on page 21.

# GETTING AROUND MEETING PEOPLE AND DOING THINGS

## PUBLIC TRANSPORT

The following STIB/MIVB routes call at "ULB"

- **Bus 71 De Brouckère – Delta**
- **Bus 72 ADEPS – Devèze-ULB**
- **Tram 25 Rogier – Boondael Gare**
- **Tram 94 Louise – Musée du Tram**

See the back cover for a map.

## TAXI

If you need a taxi, we suggest calling Taxi Verts on +32 2 349 49 49.

The address of the venue is:

**ULB Campus Solbosch**  
**50, Av. Franklin D. Roosevelt**  
**1050 Bruxelles**

The location where taxis expect to pick you up is marked on the map on the back cover.

## FREE SHUTTLE BUSES

On Sunday afternoon, FOSDEM provides a free shuttle bus service from the conference venue to Brussels South (Midi) railway station which has a regular service to many popular destinations within Belgium and to surrounding countries. Three buses will run at roughly 20-minute intervals from Av. Buyt. The journey takes approximately 20 minutes. Based on previous experience, we expect the buses to be busiest from 17:30 on. The first bus leaves at 15:30. The last departure will be at 19:30. If you don't want to queue, why not leave later?

There are plenty of bars in the neighbourhood where you can pass the time!

## KEYSIGNING

The keysigning will take place on Sunday at 14:00 in the corridor on the second level of the U building. Please bring the printed and verified list, a pen, and appropriate form of identification with you to FOSDEM. Be on time! Please be sure to complete your signing homework before Sunday, 30 April 2017, and upload new signatures on your keys to a well-connected keyserver.

## BOF ROOMS

Small and cosy rooms intended for ad-hoc discussions, meet-ups, or brainstorming sessions. Each seats approximately thirty people. There is deliberately no projector or recording equipment. Reservations are made on a first-come, first-served basis. Signup sheets are available at the infodesk in building H. Directions to the rooms can also be obtained there.

## HACKER ROOM

Need a break? Want to spend some quiet time coding? Need to recharge yourself and/or your devices? There is a hacker room where you can sit back and do all that. The hacker room is H.2111 in the upper H building.

## ANNOUNCEMENT CORNER

This is the place to be for all sorts of announcements, including adverts and

leaflets of software releases, community projects, and so on. Adverts may not be placed anywhere else on campus! Handing out flyers is likewise not allowed. In the “job corner” section, information on employment or

contracting opportunities can be found. The corner is in the upper H building. Some common sense rules apply. Everything must be related to FOSS. If in doubt, ask a member of staff.

## DEVELOPER ROOMS

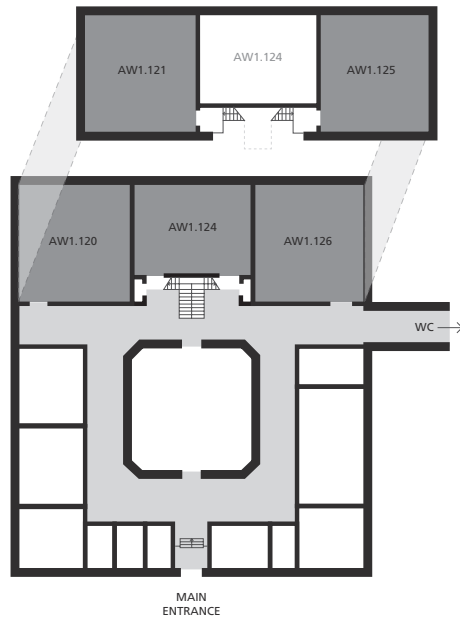
Developer rooms are assigned to self-organising groups to work together on open source projects, to discuss topics relevant to a broader subset of the community, etc.

Saturday		Sunday	
Project	Room	Project	Room
Backup and Disaster Recovery	AW1.121	Community	AW1.124
BSD	K.3.201	Decentralised Internet	AW1.125
Config Management	UA2.220	Desktops	K.4.401
Distributions	K.4.601	Electronic Design Automation	AW1.120
Embedded, Mobile & Automotive	UD2.120	Embedded, Mobile & Automotive	UD2.218A
Free Java	H.1302	Geospatial	H.2214
Graph Processing	H.2214	Go	H.1302
HPC, Big Data, and Data Science	H.2213	Guile	K.4.601
Internet of Things	AW1.126	Legal & Policy Issues	H.1301
Legal & Policy Issues	H.1301	Linux Containers and Microservices	UA2.220
Lua	K.3.201	LLVM Toolchain	K.3.201
Microkernels and Component-based OS	AW1.125	Monitoring and Cloud	UB2.252A
Mozilla	UD2.218A	Open Game Development	AW1.126
MySQL & Friends	H.1309	Open Media	K.3.401
Open Document Editors	K.4.401	Open Source Design	AW1.121
PHP & Friends	H.1308	Perl	K.4.201
Python	H.1308	PHP & Friends	H.1302
Real Time Communications	K.3.401	PostgreSQL	H.1309
Ruby	K.4.201	Python	UD2.120
SDN and NFV	UA2.114	Security	H.1308
Software Defined Radio	AW1.120	Software Defined Storage	UA2.114
Valgrind	AW1.124	Testing & Automation	H.2213
Virtualisation and IaaS	UB2.252A		

## STANDS

Building AW	Building K - level 1	Building K - level 2
	<b>Group A</b>	
coreboot	KDE	Mozilla
GNU GRUB	Gnome	diaspora*
Open Source Hardware	LibreOffice	Apache Software Foundation
Automotive Grade Linux	Kopano	OW2
Ham Radio	CiviCRM	Jenkins
CorteXlab	GNU Taler / p≡p foundation	Wikis and CMS
OpenEmbedded	FreeBSD Project	OpenNMS
<b>Building H</b>	illumos	Suricata IDS
Godot Engine	openSUSE	Turris Omnia
Software Freedom Conservancy	CentOS	Open Smart Grid Platform
BBC Open Source	Fedora Project	Perl Programming Language
Python	<b>Group B</b>	coala
wolfSSL	ReactOS / Haiko	Linux From Scratch
GrimoireLab	Gentoo	Google Summer of Code and Google Code-in programs
MySQL	CoreOS Linux	Ultimaker
O'Reilly Media	Debian	SOFA
	PostgreSQL	MuseScore
	Nextcloud	Matrix
	Bazel	The Realtime Lounge
	Open Build Service / openQA	
	<b>Group C</b>	
	Free Software Foundation Europe (FSFE)	
	Vikings	
	Tor Project, Tails Project, Frënn vun der Ënn, Nos oignons	
	Xen Project	
	OpenStack	
	oVirt / Foreman	
	Gluster	
	ownCloud	
	CAcert / secure-u	

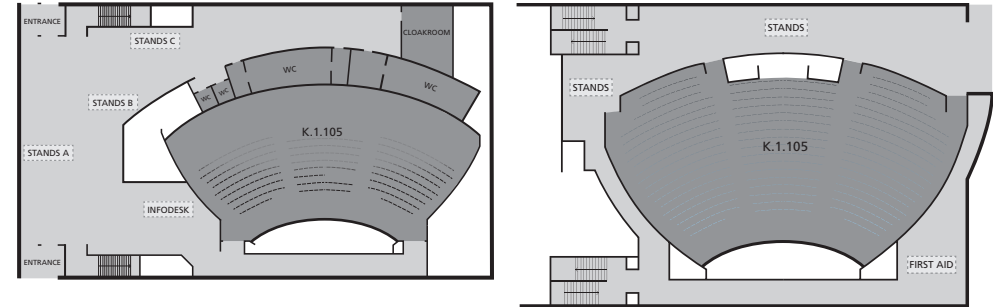
## BUILDING AW



Developer rooms: <b>Saturday</b>		Developer rooms: <b>Sunday</b>	
Project	Room	Project	Room
Software Defined Radio	AW1.120	Electronic Design Automation	AW1.120
Backup and Disaster Recovery	AW1.121	Open Source Design	AW1.121
Valgrind	AW1.124	Community	AW1.124
Microkernels and Component-based OS	AW1.125	Decentralised Internet	AW1.125
Internet of Things	AW1.126	Open Game Development	AW1.126

Stands	
coreboot	Ham Radio
GNU GRUB	CorteXlab
Open Source Hardware	OpenEmbedded
Automotive Grade Linux	

## BUILDING K - LEVEL 1 - 2

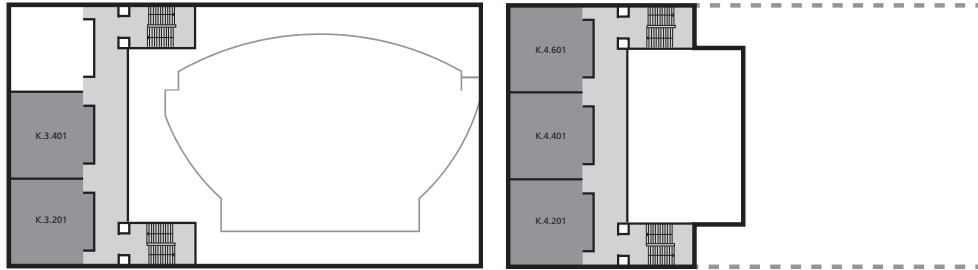


Main tracks: <b>Saturday</b>	Main tracks: <b>Sunday</b>
Building	Architectures
Miscellaneous	Documentation
	Miscellaneous

Stands		
Group A		
KDE	CiviCRM	openSUSE
Gnome	GNU Taler / p≡p foundation	CentOS
LibreOffice	FreeBSD Project	Fedora Project
Kopano	illumos	
Group B		
ReactOS / Haiko	Debian	Bazel
Gentoo	PostgreSQL	Open Build Service / openQA
CoreOS Linux	Nextcloud	
Group C		
Free Software Foundation Europe (FSFE)	Xen Project	Gluster
Vikings	OpenStack	ownCloud
Tor Project, Tails Project, Frënn vun der Ënn, Nos oignons	oVirt / Foreman	CAcert / secure-u

## BUILDING K - LEVEL 3 - 4

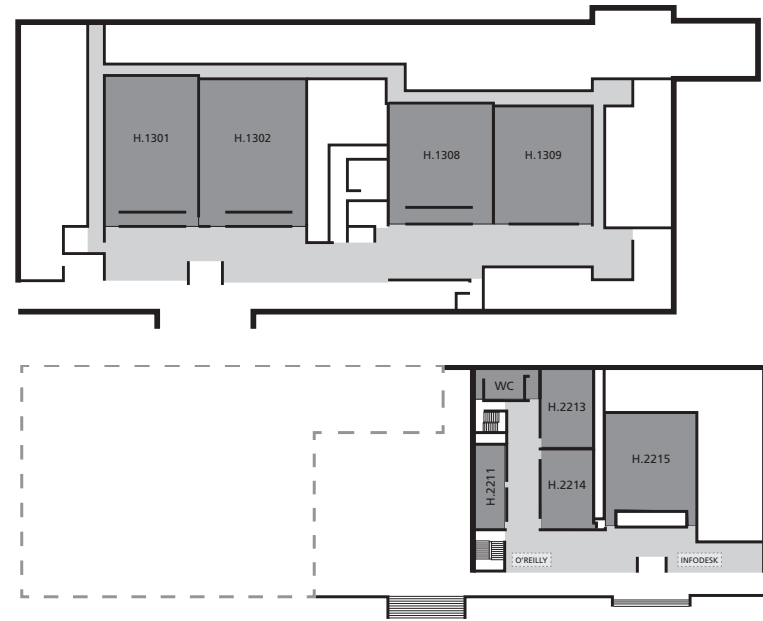
The stands are on level 2 of K building



Developer rooms: <b>Saturday</b>		Developer rooms: <b>Sunday</b>	
Project	Room	Project	Room
BSD	K.3.201	LLVM Toolchain	K.3.201
Lua	K.3.201	Open Media	K.3.401
Real Time Communications	K.3.401	Perl	K.4.201
Ruby	K.4.201	Desktops	K.4.401
Open Document Editors	K.4.401	Guile	K.4.601
Distributions	K.4.601		

Stands		
Mozilla	Suricata IDS	Ultimaker
diaspora*	Turris Omnia	SOFA
Apache Software Foundation	Open Smart Grid Platform	MuseScore
OW2	Perl Programming Language	Matrix
Jenkins	coala	The Realtime Lounge
Wikis and CMS	Linux From Scratch	
OpenNMS	Google Summer of Code and Google Code-in programs	

## BUILDING H

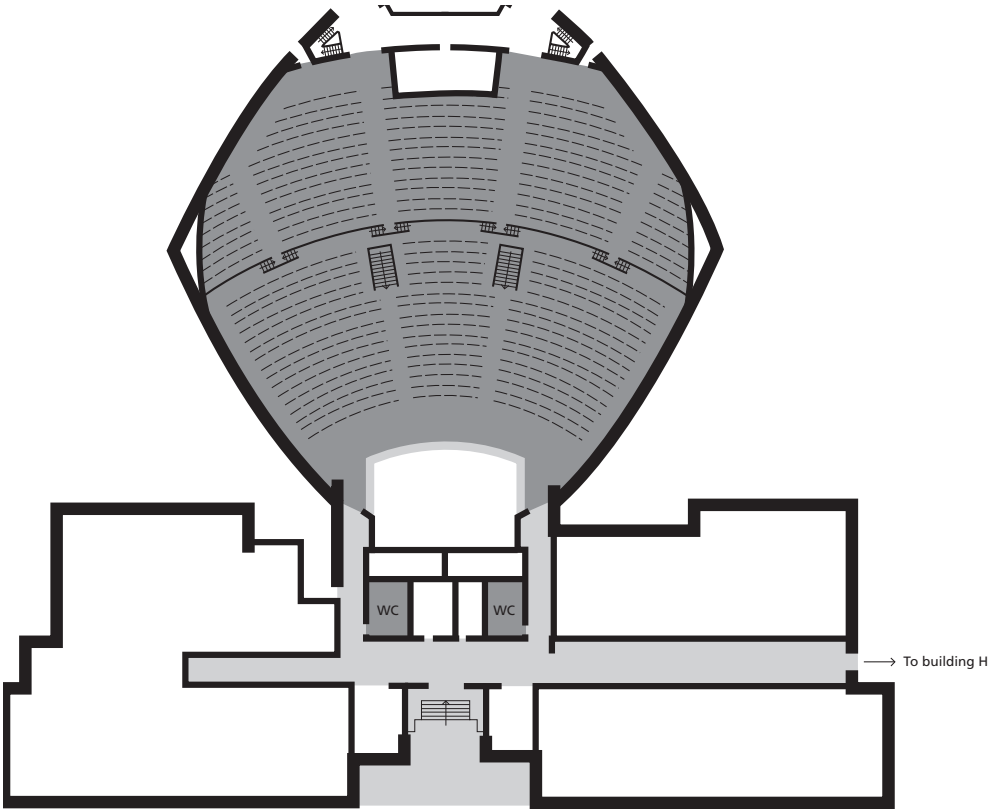


Developer rooms: <b>Saturday</b>		Developer rooms: <b>Sunday</b>	
Project	Room	Project	Room
Legal & Policy Issues	H.1301	Legal & Policy Issues	H.1301
Free Java	H.1302	Go	H.1302
PHP & Friends	H.1308	PHP & Friends	H.1302
Python	H.1308	Security	H.1308
MySQL & Friends	H.1309	PostgreSQL	H.1309
Hacker room	H.2211	Hacker room	H.2211
HPC, Big Data and Data Science	H.2213	Testing & Automation	H.2213
Graph Processing	H.2214	Geospatial	H.2214
Lightning talks	H.2215	Lightning talks	H.2215

Stands		
Godot Engine	Python	MySQL
Software Freedom Conservancy	wolfSSL	O'Reilly Media
BBC Open Source	GrimoireLab	

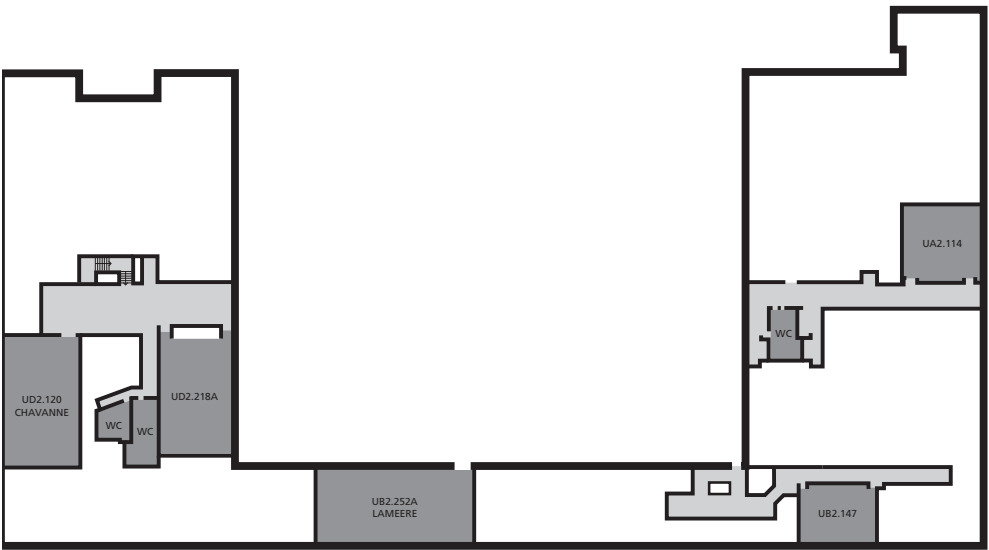


# BUILDING J



Main tracks: Saturday	Main tracks: Sunday
Cloud	Security and Encryption
Miscellaneous	

# BUILDING U



Developer rooms: Saturday		Developer rooms: Sunday	
Project	Room	Project	Room
SDN and NFV	UA2.114	Software Defined Storage	UA2.114
Config Management	UA2.220	Linux Containers and Microservices	UA2.220
Certification	UB2.147	Certification	UB2.147
Virtualisation and IaaS	UB2.252A	Monitoring and cloud	UB2.252A
Embedded, Mobile & Automotive	UD2.120	Python	UD2.120
Mozilla	UD2.218A	Embedded, Mobile & Automotive	UD2.218A



## CORNERSTONE SPONSORS



**Google's** innovative search technologies connect millions of people around the world with information every day. Founded in 1998 by Stanford Ph.D. students Larry Page and Sergey Brin, Google today is a top web property in all major global markets. Google's targeted advertising program, which is the largest and fastest growing in the industry, provides businesses of all sizes with measurable results, while enhancing the overall web experience for users. Google is headquartered in Silicon Valley with offices throughout North America, Europe, and Asia.

- ⚙ Google supports the event financially.
- ⚙ Learn more at [www.google.com](http://www.google.com).



**Red Hat** is the world's leading provider of open source software solutions, using a community-powered approach to reliable and high-performing cloud, Linux, middleware, storage and virtualization technologies. Red Hat also offers award-winning support, training, and consulting services. As the connective hub in a global network of enterprises, partners, and open source communities, Red Hat helps create relevant, innovative technologies that liberate resources for growth and prepare customers for the future of IT.

- ⚙ Red Hat supports the event financially.
- ⚙ Learn more at [www.redhat.com](http://www.redhat.com).

## MAIN SPONSORS



**Cisco** enables people to make powerful connections - whether in business, education, philanthropy, or creativity. Cisco hardware, software, and service offerings are used to create the Internet solutions that make networks possible - providing easy access to information anywhere, at any time. Cisco was founded in 1984 by a small group of computer scientists from Stanford University. Since the company's inception, Cisco engineers have been leaders in the development of Internet Protocol (IP)-based networking technologies. Today, with more than 67,000 employees worldwide, this tradition of innovation continues with industry-leading products and solutions in the company's core development areas of routing and switching, as well as in advanced technologies such as Application Networking, Data Center, Digital Media, IPICS, Mobility, Security, Storage Networking, TelePresence, Unified Communications, Video and Virtualization.

- ⚙ Cisco provides all of our WLAN hardware and helps us setting up the wireless network.
- ⚙ Learn more at [www.cisco.com](http://www.cisco.com).



**The Cloud Native Computing Foundation (CNCF)** will harmonize emerging technologies and foster innovation in container packaged, dynamically scheduled, and microservices based application development and operations. The mission of the CNCF is to create and drive the adoption of a new computing paradigm that is optimized for modern distributed systems environments capable of scaling to tens of thousands of self healing multi-tenant nodes.

- ⚙ The Cloud Native Computing Foundation (CNCF) supports the event financially.
- ⚙ Learn more at [www.cncf.io](http://www.cncf.io).



**Codethink** specialises in system-level software engineering to enable advanced technical applications, working across a range of industries including finance, automotive, telecoms and medical. As experts in Free and Open Source Software, they help customers take maximum advantage of the knowledge and technologies developed by the Open Source community.

Their customers are international-scale organizations who seek competitive edge through design of enterprise appliances and embedded systems which are faster, smaller, more secure, more up-to-date, or more advanced than their competitors.

- ⚙️ Codethink supports the event financially.
- ⚙️ Learn more at [www.codethink.co.uk](http://www.codethink.co.uk)

## colt

**Colt** provides network, voice, and data centre services to thousands of businesses around the world, allowing them to focus on delivering their business goals instead of the underlying infrastructure. Customers include 18 of the top 25 banks and diversified financial groups and 19 out of the top 25 companies in both global media and telecoms industries (Forbes 2000 list, 2014). In addition, Colt works with over 50 exchange venues and 13 European central banks. Colt operates across Europe, Asia and North America with connections into over 200 cities globally. It completed the acquisition of KVH in 2014, an integrated managed communications and IT infrastructure services business, with headquarters in Tokyo and operations in Hong Kong, Seoul and Singapore.

- ⚙️ Colt sponsors the internet uplink at FOSDEM.



**CoreOS, Inc.** provides distributed systems technologies to run at-scale services consistently across cloud and data center. CoreOS is the creator and maintainer of open source projects CoreOS Linux, etcd, fleet, flannel, Clair and rkt. In addition, CoreOS is the creator of Tectonic, an enterprise-ready platform that combines Google's Kubernetes and the CoreOS stack for running Linux containers. The strategies and architectures that influence CoreOS allow companies like Google, Facebook and Twitter to run their services at scale with high resilience. Learn more at <https://coreos.com/> or follow CoreOS on Twitter @coreoslinux.

- ⚙️ CoreOS supports the event financially.
- ⚙️ Learn more at [www.coreos.com](http://www.coreos.com).

## GitHub

**GitHub** is how people build software. Millions of individuals and organizations around the world use GitHub to discover, share, and collaborate on software—from games and experiments to popular frameworks and leading applications. Together, we're defining how software is built today.

Whether you use GitHub.com or GitHub Enterprise on your own servers, you can access one of the world's largest developer communities to build software in the way that works best for you. Choose your deployment option and integrate your favorite third party tools into a powerful, collaborative workflow. Interested in starting your trip to Brussels a little early? Join GitHub at Git Merge February 2-3.

- ⚙️ GitHub supports the event financially.
- ⚙️ Learn more at [www.github.com](http://www.github.com).

## Hewlett Packard Enterprise

Open source software is a strategic priority for **HPE**. HPE creates new possibilities for technology to have a meaningful impact on people, businesses, governments and society. HPE not only extensively uses open source within the company but also contributes our expertise to hundreds of open source projects worldwide.

To learn more visit the HPE open source community page: <http://www8.hp.com/us/en/campaigns/opensource/community.html>.

- ⚙️ HPE supports the event financially.
- ⚙️ Learn more at <http://www8.hp.com/us/en/campaigns/opensource/community.html>.



**Minio** is a distributed object storage server. It is written in Go and released under Apache License 2.0. The name Minio stems from Minimal Object storage. Minio will enable application developers to build their own Amazon S3 compatible object storage without any special storage skills. It is light enough to be bundled along with the application stack similar to Node.js and MongoDB. Our community hangs out on Gitter @ [www.gitter.minio.io](http://www.gitter.minio.io).

- ⚙️ Minio supports the event financially.
- ⚙️ Learn more at [www.minio.io](http://www.minio.io).



**MySQL** is the world's most popular open source database. With its proven performance, reliability and ease-of-use, MySQL has become the leading database choice for web-based applications, used by high profile web properties including Facebook, Twitter, YouTube, Yahoo! and many more. Oracle drives MySQL innovation, delivering new capabilities to power next generation web, cloud, mobile and embedded applications.

- ⚙️ MySQL supports the event financially.
- ⚙️ Learn more at [www.mysql.com](http://www.mysql.com).



Once again, we are proud to have **O'Reilly** as one of our sponsors.

O'Reilly are the premier information source for leading-edge computer technologies and communicate the knowledge of experts through books, conferences, and web sites. Their books, sporting the iconic animals on the covers, occupy a treasured place on the shelves of the developers building the next generation of software. Their conferences and summits bring innovators together to shape the revolutionary ideas that spark new industries. From the Internet to the web, Linux, Open Source, and now peer-to-peer networking, O'Reilly puts technologies on the map.

- ⚙️ O'Reilly supports the event financially.
- ⚙️ Learn more at [www.oreilly.com](http://www.oreilly.com).

## A SPECIAL THANKS TO ...!



### The Université Libre de Bruxelles

is a French-speaking university in Brussels, Belgium. It has about 20,000 students. ULB has hosted FOSDEM (and OSDEM before it) since the beginning of time.

**Cercle Informatique, ULB** is a group of ULB students who help the FOSDEM team liaise with the university administration.

The **FOSDEM Team** spends a lot of free time throughout the year organising this great event. Without them there would be no FOSDEM.

## HELP US MAKE FOSDEM BETTER

Tear off this page and drop it in the feedback box at the Infodesk on your way out. Alternatively, send email to [feedback@fosdem.org](mailto:feedback@fosdem.org) if you prefer to keep your booklet intact.

You can also give feedback on any individual talk by following the link near the bottom of its page in the online schedule at [fosdem.org/schedule/](http://fosdem.org/schedule/)

