



Apache OpenOffice: The Task Pane Adventure

or how, when and why the Tool Panel
element may become your new best friend

FOSDEM '13

speaker:

Fabrizio Marchesano

Softeco Sismat, Italy

softeco
sismat
information technology



About me

(some very interesting information you can't live without... can't you?)

- Fabrizio Marchesano
- Consultant developer, **Genoa, Italy**
- Working at **Softeco Sismat S.p.A.**
- Long-time **OpenOffice.org** user
- Proud supporter and evangelist of **Apache OpenOffice** in the enterprise business context
- Here today thanks to... **Mozart!**
- Any guess about the link between a composer and the development of tailor-made **AOO** extensions?
- (hint: Mozart's last one is known as “**Jupiter**”)





What we are going to talk about

- A case well known to me: «Yes, I would like to make the move to **Apache OpenOffice**, but...»
- **Extensions**: your passkey to **AOO** users' heart
- The **Task Pane**: your new best friend whenever a practical UI is needed
- Going a little technical about the **Tool Panel** element
- Inspired by true events: **Calc** and **Writer** demos
- Conclusions



The fear of change

- Let's say it in plain words: a software migration process is a rather burdensome task
- It is not a matter of specific operating systems or applications involved, in the same way a house moving is a demanding activity regardless of peculiar apartments and furnishings, but for some strange reason a migration to a new desktop office suite is believed to be the most challenging one
- Case histories are usually helpful to show that it is actually possible and there's only to gain from it, but there's always that little voice whispering to audience: «It would be nice, but your business is different...»



Extensions: the tailor-made perspective

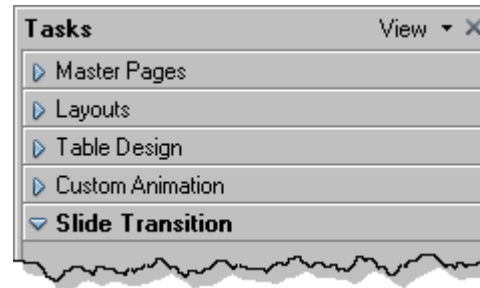
- In the enterprise business context, **extension's** capabilities are often underestimated
- They are believed to be unseen portion of code (e.g. to support file formats) or small supplementary features attached to the host application
- But that is far for truth!
- **Extensions** can be useful, dedicated, out-and-out applications themselves, and they can be created or customized to fit even highly specific needs, easing the daily grind and improving the user experience





Beyond the Impress Task Pane

- You already know the “fantastic five” from **Impress**: the standard tool panels grouped into the task pane, always useful, always visible, always at one-click distance

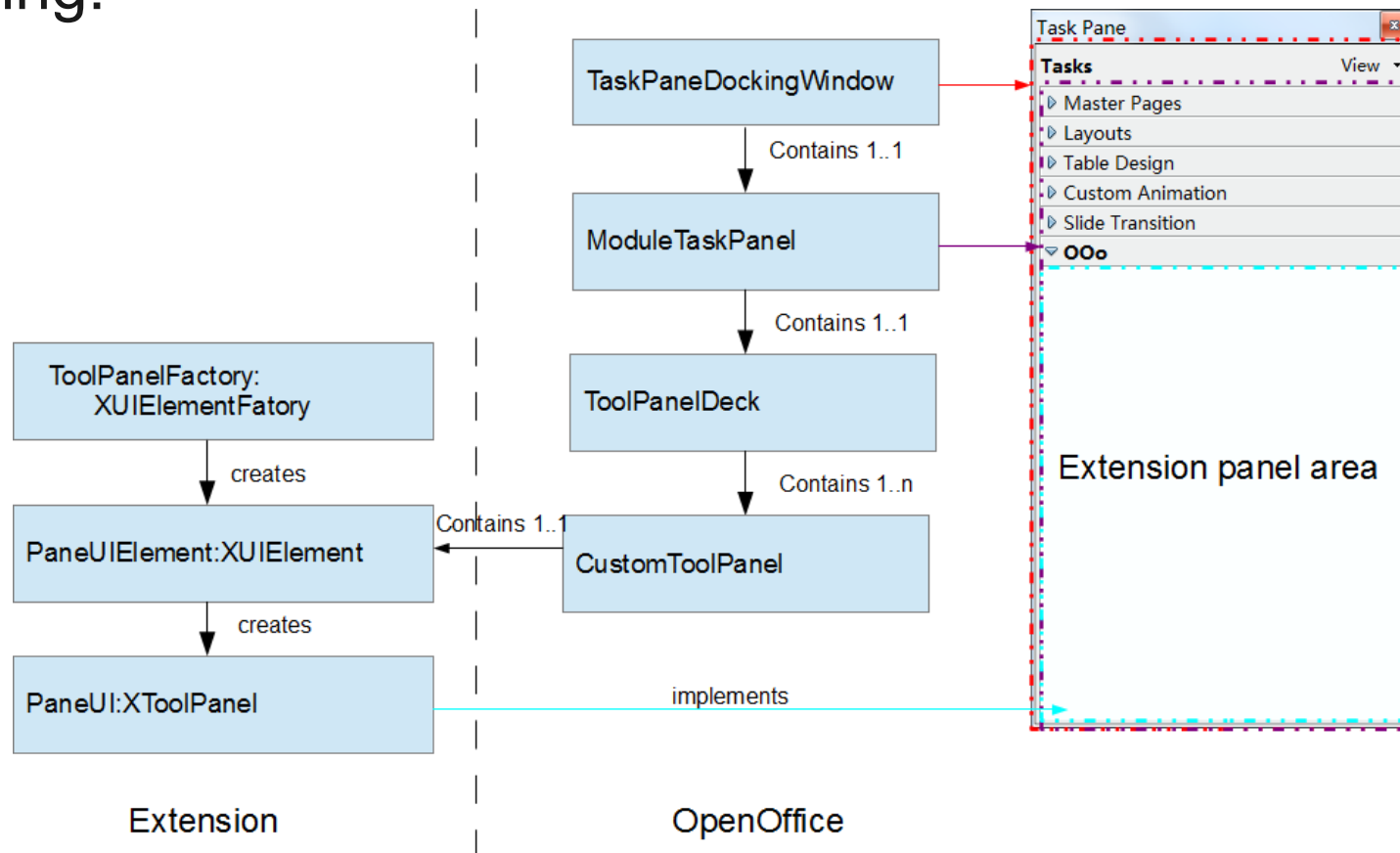


- Now think about each circumstance in which you could speed up your job if only the needed interface were at your fingertips
- And now think about the chance to having your own custom tool panels always available in **Writer** or **Calc** contexts
- Sounds good, doesn't it?



The Tool Panel element

- Since OpenOffice.org 3.3 you can stop thinking and start doing!



- http://wiki.openoffice.org/wiki/Framework/Article/Tool_Panels



Calc demo

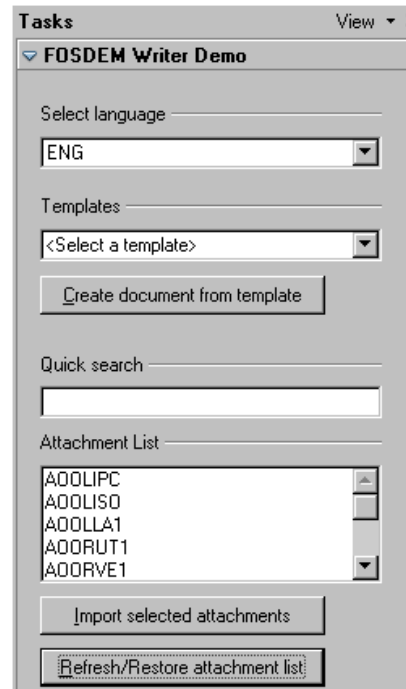
- «I need to import data from different sources in order to manually manipulate them and create charts, considering that I have to deal with dynamic queries (based on the result of a web service call) which cannot be automated because the input parameters have to be user-defined, depending on unpredictable key factors. Moreover, we are talking about a shared workspace, so users should be able to identify themselves to access external sources.»

The screenshot shows a 'Tasks' dialog box with a 'View' dropdown and a close button. The main section is titled 'FOSEDEM Calc Demo'. It contains a text input field with the value '1'. Below it is a dropdown menu set to 'Euro (EUR)'. The word 'to' is centered between two more dropdown menus, the second of which is set to 'US Dollar (USD)'. There is an empty text input field followed by a 'Convert' button. Below this is a section for database access with the label 'Access Database'. It includes 'Username:' and 'Password:' labels, each followed by an empty text input field. At the bottom is an 'Import data' button.



Writer demo

- «I have several text documents written in various languages containing the description of coded device base components which are used to create handbooks for customers depending on the requested configuration. How can I ease the process to select and import such descriptions in the current document?»





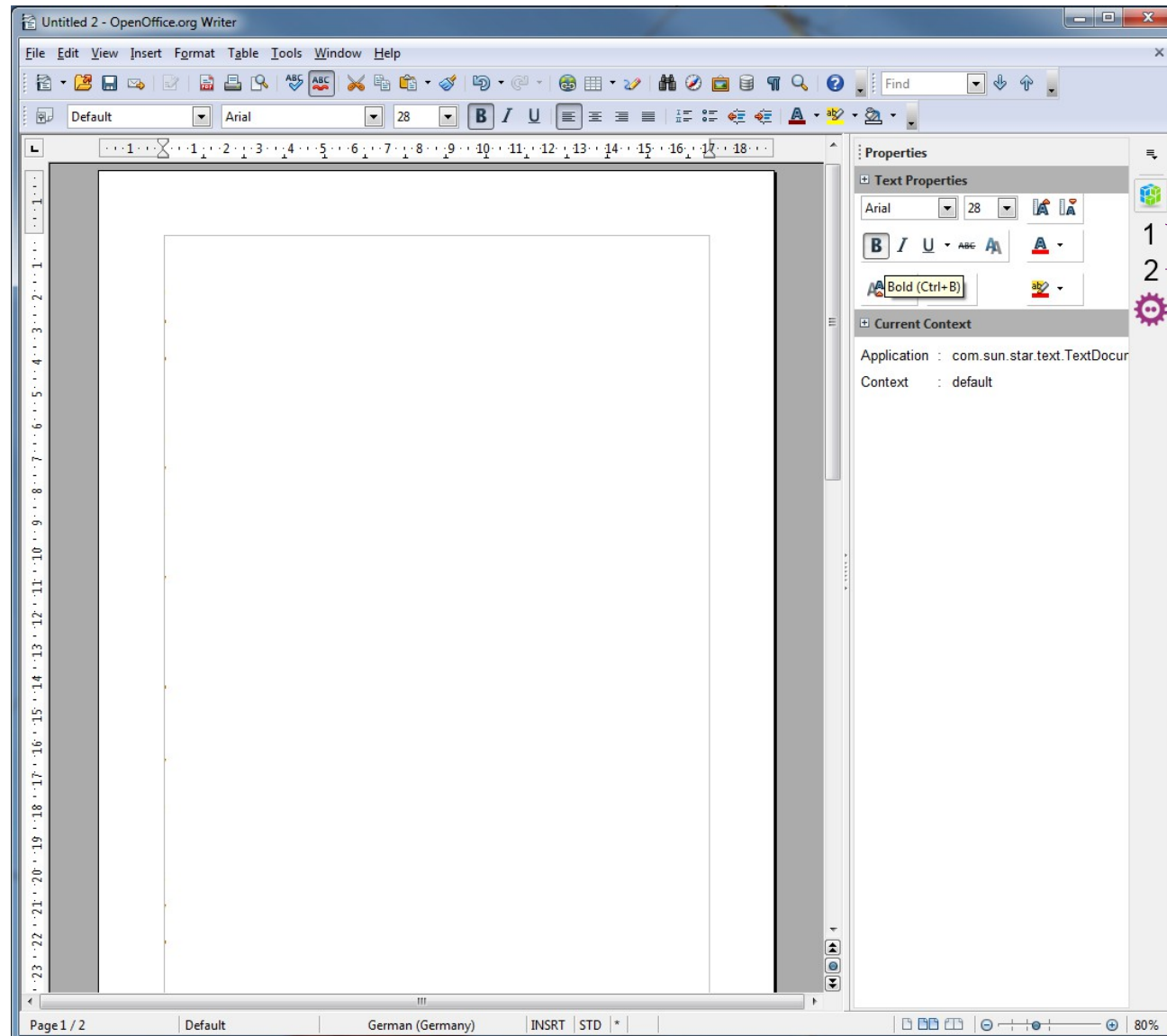
Conclusions

- **Extensibility** can make the difference between **Apache OpenOffice** and the rest of the world, even making the no-charge license a very welcome “collateral benefit”
- The **Tool Panel** element may be considered as the first choice for all those needs involving a custom and practical **UI**
- The only boundary is imagination (and remember that, unless you have specific needs, extensions are platform-independent)
- Let's keep this in mind while waiting for next major release, **Apache OpenOffice 4.0**



A glimpse of the future

warning: screenshot of work-in-progress UI



**Custom
Extensions**



How to contact me

- For **Apache OpenOffice** development matters, please use the related mailing lists:

dev@openoffice.apache.org

api@openoffice.apache.org

- For any other subject:

fabrizio.marchesano@selesoft.it



Used resources

- **Apache OpenOffice Presentation Template:**
<http://templates.services.openoffice.org/en/node/8932>
- **TaskPaneComponent demo:**
http://svn.apache.org/repos/asf/incubator/ooo/tags/AOO340/main/testautomation/extensions/optional/input/extension_sources/TaskPaneComponent/
- **OptionsPage demo:**
<https://github.com/vmiklos/lo-sdk-examples/tree/master/java/OptionsPageDemo>
- **Sidebar Developer Builds:**
<http://wiki.openoffice.org/wiki/Sidebar>



Thanks!!!