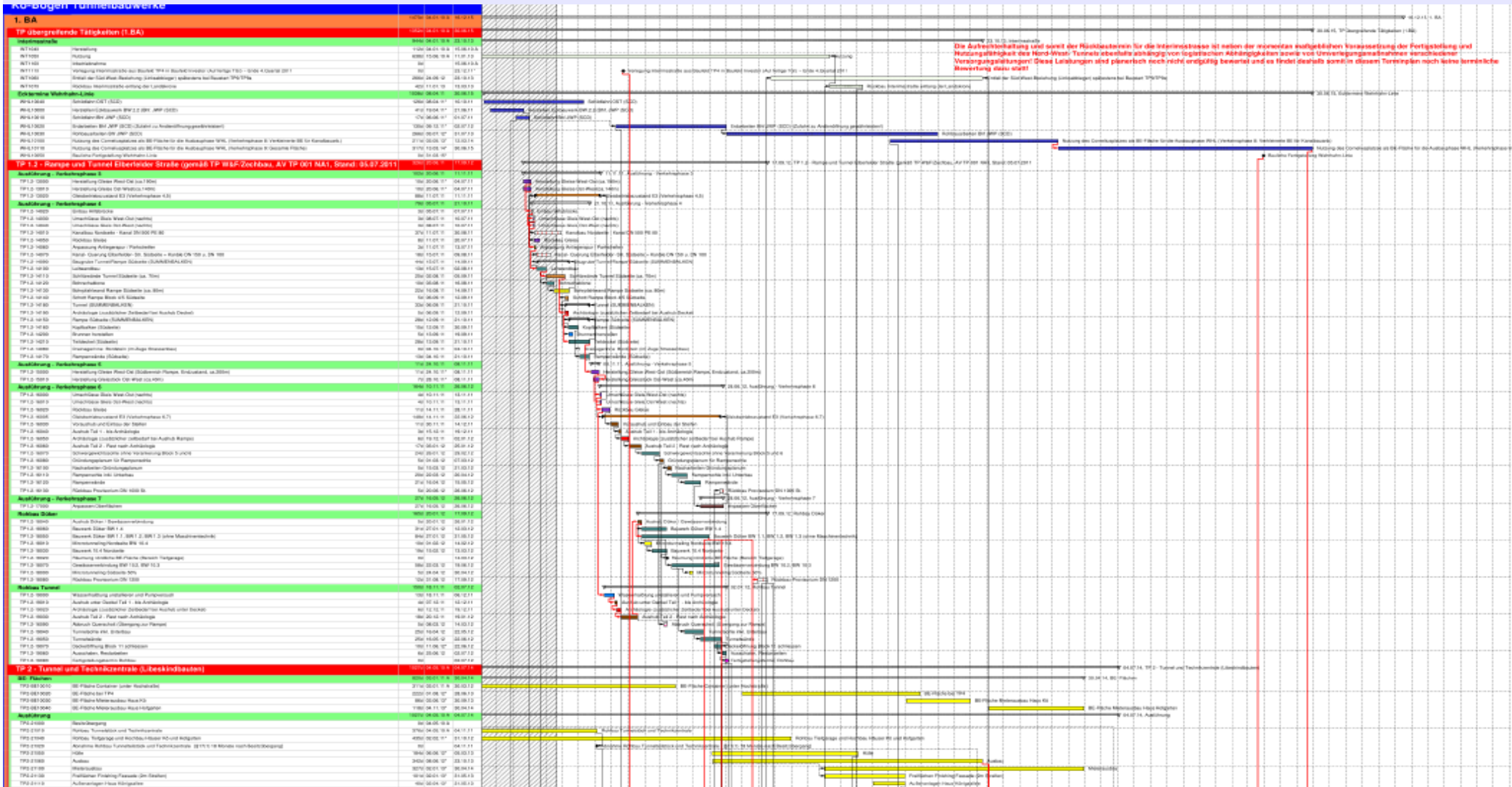




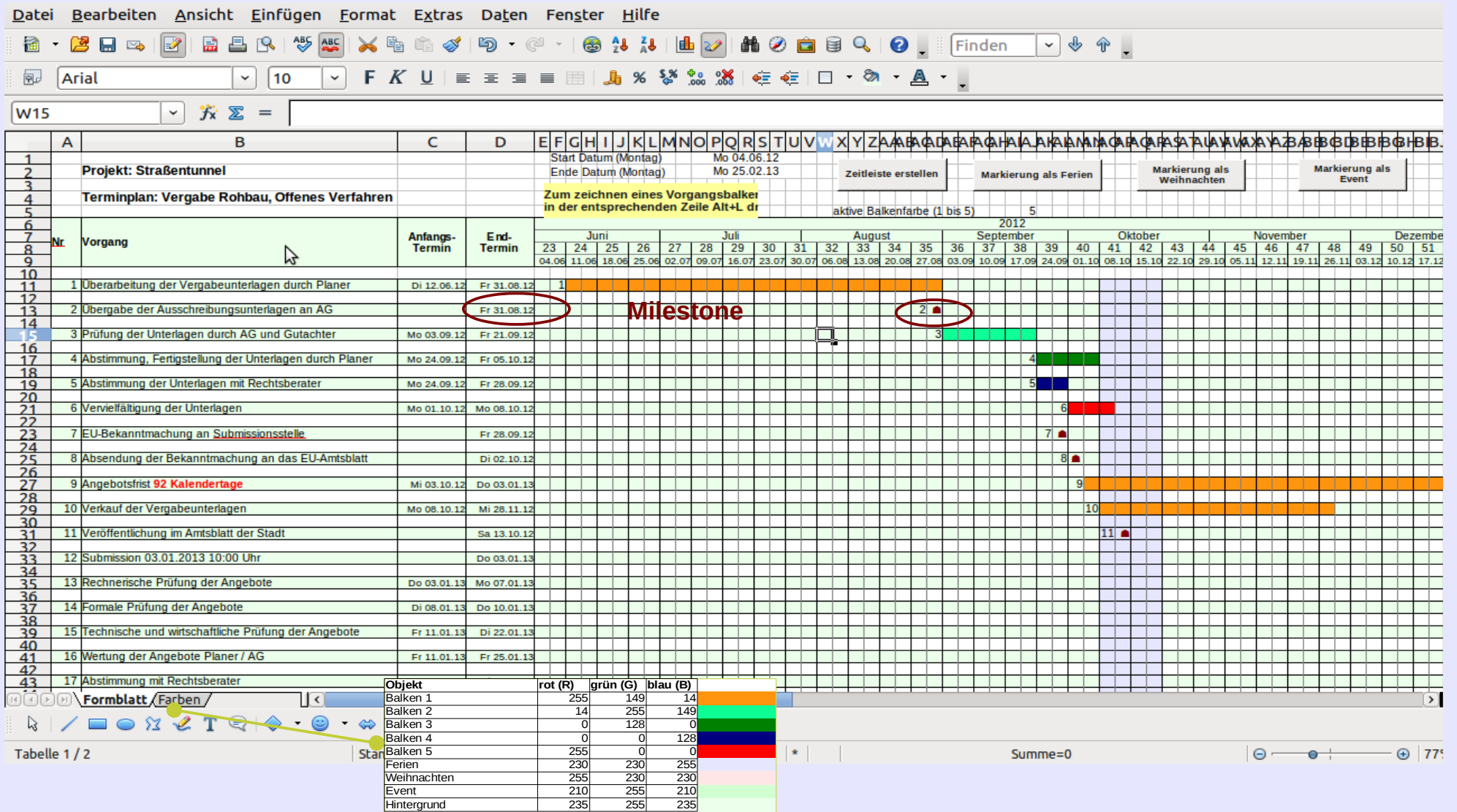
# First example: an easy way to produce timetables as Gantt charts



# First example: an easy way to produce timetables as Gantt charts

The screenshot shows a spreadsheet application interface with a menu bar (Datei, Bearbeiten, Ansicht, Einfügen, Format, Extras, Daten, Fenster, Hilfe) and a toolbar. The spreadsheet grid has columns labeled A through BB and rows numbered 1 to 44. In row 2, the cells B2 and C2 contain the text "Projekt: <Name des Projektes>" and "Terminplan: <Bezeichnung des Terminplans>" respectively, both circled in red. In row 8, the cell A8 is labeled "Nr." and B8 is labeled "Vorgang", also circled in red. The ribbon at the top right contains several buttons: "Zeitleiste erstellen" (circled in red), "Markierung als Ferien", "Markierung als Weihnachten", and "Markierung als Event". The status bar at the bottom displays "Tabelle 1 / 2", "Standard", "STD \*", "Summe=0", and "75%".

# First example: an easy way to produce timetables as Gantt charts



# Second example: a more sophisticated approach, create and calculate a cash outflow plan for a project

Excel interface showing a project cost calculation tool. The spreadsheet includes fields for project name, start/end dates, and a table for cost categories. A red oval highlights the 'Kostenkategorien' table header. A red text box explains the 'Faktor' (Factor) used in the cost curves.

**Faktor:**  
 0 oder 1 linearer Verlauf  
 0 < Faktor < 1 progressiver Verlauf  
 Faktor > 1 degressiver Verlauf  
 5 ergibt einen S-förmigen Kurvenverlauf

Kostenkategorien				Kostenelemente				
Projekt	Teilprojekt	Bereich	Einzelvorgang	Beginn	Ende	Soll-Kosten	Start-Kosten	Faktor
< statt hier								

The graphs show 'Kosten in EUR' on the y-axis (0 to 120,000) and 'Zeit in Monaten' on the x-axis (1 to 21). The linear graph shows a straight line. The degressiv graph shows a curve that starts steep and levels off. The progressiv graph shows a curve that starts shallow and becomes steeper. The S-förmig graph shows a classic S-curve.

# Second example: a more sophisticated approach, create and calculate a cash outflow plan for a project

Excel interface showing a project cost breakdown and cash flow plan. The spreadsheet is titled "J152" and contains data for a project named "Ausbau U-Bahn Tunnel und Haltestellen".

**Project Information:**

- Projekt: Ausbau U-Bahn Tunnel und Haltestellen
- Projektstart: 01.2013
- Projektende: 12.2015

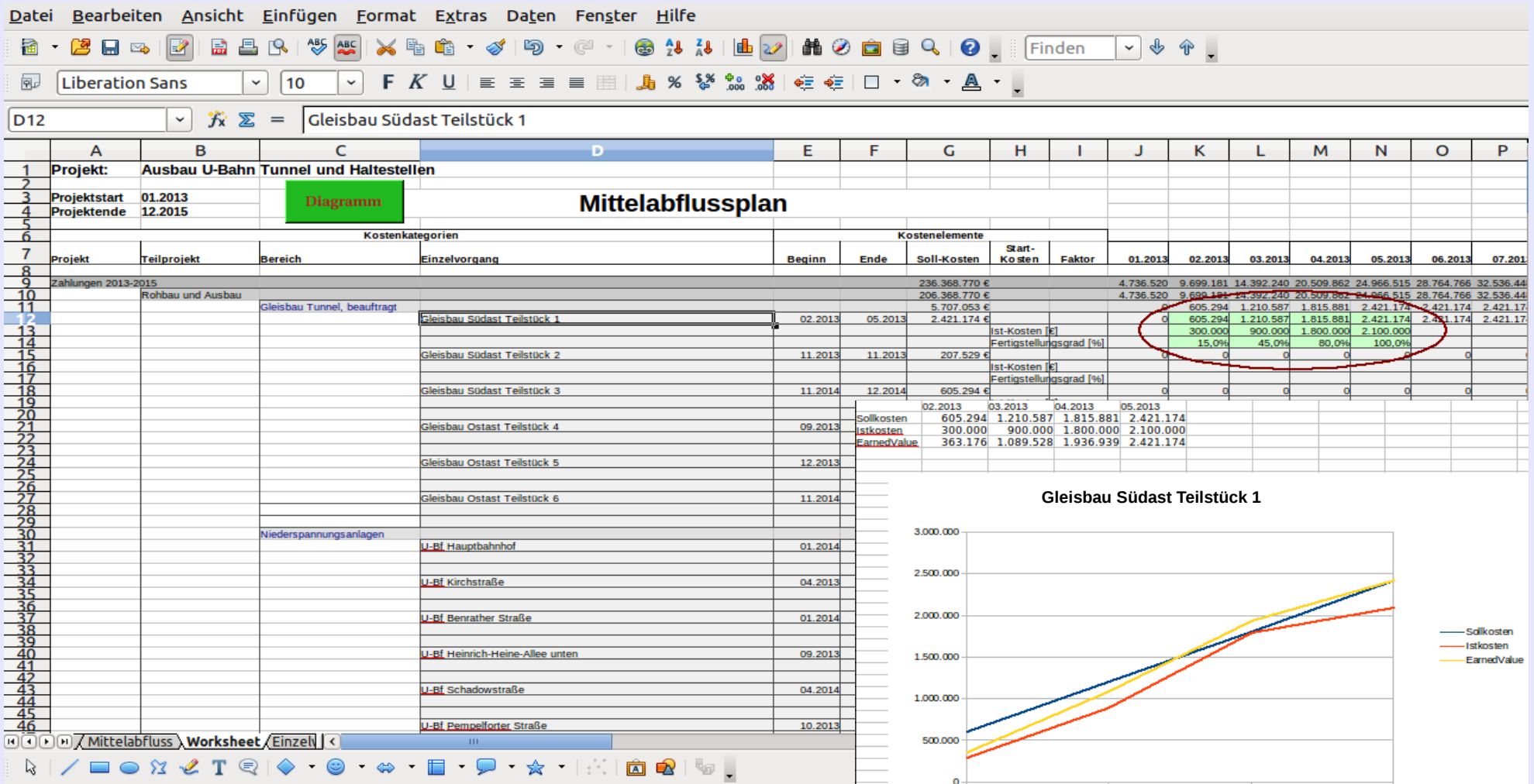
**Cost Categories and Elements:**

Projekt	Teilprojekt	Bereich	Einzelvorgang	Beginn	Ende	Soll-Kosten	Start-Kosten	Faktor	Kostenelemente						
									01.2013	02.2013	03.2013	04.2013	05.2013	06.2013	07.2013
Zusammenfassen 2013-2015						236.368.770 €	4.736.520	9.699.181	14.392.240	20.509.862	24.966.515	28.764.766	32.536.44		
Rohbau und Ausbau						206.368.770 €	4.736.520	9.699.181	14.392.240	20.509.862	24.966.515	28.764.766	32.536.44		
Gleisbau Tunnel beauftragt						5.201.033 €	0	605.294	1.210.587	1.815.881	2.421.174	2.421.174	2.421.174		
Gleisbau Südast Teilstück 1						2.421.174 €	0	605.294	1.210.587	1.815.881	2.421.174	2.421.174	2.421.174		
Gleisbau Südast Teilstück 2						207.529 €	0	0	0	0	0	0	0		
Gleisbau Südast Teilstück 3						605.294 €	0	0	0	0	0	0	0		
Gleisbau Ostast Teilstück 4						1.556.469 €	0	0	0	0	0	0	0		
Gleisbau Ostast Teilstück 5						691.764 €	0	0	0	0	0	0	0		
Gleisbau Ostast Teilstück 6						224.823 €	0	0	0	0	0	0	0		
Niederspannungsanlagen						10.919.831 €	0	0	0	141.700	283.400	425.100	566.80		
U-Bf Hauptbahnhof						1.808.089 €	0	0	0	0	0	0	0		
U-Bf Kirchstraße						1.842.099 €	0	0	0	141.700	283.400	425.100	566.80		
Rohbauleistungen (Restleistungen)						1.000.000 €	27.778	55.556	83.333	111.111	138.889	166.667	194.44		
Alle U-Bahnhöfe						1.000.000 €	27.778	55.556	83.333	111.111	138.889	166.667	194.44		
Lüftungsanlagen						1.902.856 €	0	11.748	23.496	35.245	63.655	92.066	120.47		
U-Bf Hauptbahnhof						270.209 €	0	11.748	23.496	35.245	63.655	92.066	120.47		
U-Bf Kirchstraße						366.575 €	0	0	0	16.662	33.325	49.98	66.64		
U-Bf Benrather Aller						261.752 €	0	0	0	0	0	0	0		
U-Bf Große Freiheit						304.425 €	0	0	0	0	0	0	0		
U-Bf Steeler Straße						336.236 €	0	0	0	0	0	0	0		
U-Bf Pempelfstraße						363.660 €	0	0	0	0	0	0	0		
Klima-Anlagen						100.000 €	0	0	0	0	0	0	0		
Alle U-Bahnhöfe						100.000 €	0	0	0	0	0	0	0		
Objektüberwachung (örtliche Bauüberwachung)						4.469.056 €	62.234	79.084	100.391	127.272	161.086	203.462	256.32		
Alle U-Bahnhöfe						4.469.056 €	62.234	79.084	100.391	127.272	161.086	203.462	256.32		
Baustellenlogistik beauftragt						5.930.803 €	164.745	329.489	494.234	658.978	823.723	988.467	1.153.21		
Alle U-Bahnhöfe und Tunnelstrecken						5.930.803 €	164.745	329.489	494.234	658.978	823.723	988.467	1.153.21		
Feuerwehreinsatzplanung						100.000 €	0	0	0	0	0	0	33.333		
Alle U-Bahnhöfe						100.000 €	0	0	0	0	0	0	33.333		
Fahrleitungsanlagen						2.917.345 €	0	0	0	0	0	0	0		
Gesamte Strecke und alle U-Bahnhöfe						2.917.345 €	0	0	0	0	0	0	0		
Rettungseinrichtungen						100.000 €	0	0	0	0	0	0	0		
Alle U-Bahnhöfe						100.000 €	0	0	0	0	0	0	0		
Schließanlage Betriebsräume						250.000 €	0	0	0	0	0	0	0		
Alle U-Bahnhöfe						250.000 €	0	0	0	0	0	0	0		
Strecken Kabel / NT-Kabel beauftragt						1.352.126 €	0	0	0	0	0	0	13.859		
U-Bf Hauptbahnhof						194.021 €	0	0	0	0	0	0	13.859		
U-Bf Kirchstraße						262.963 €	0	0	0	0	0	0	0		

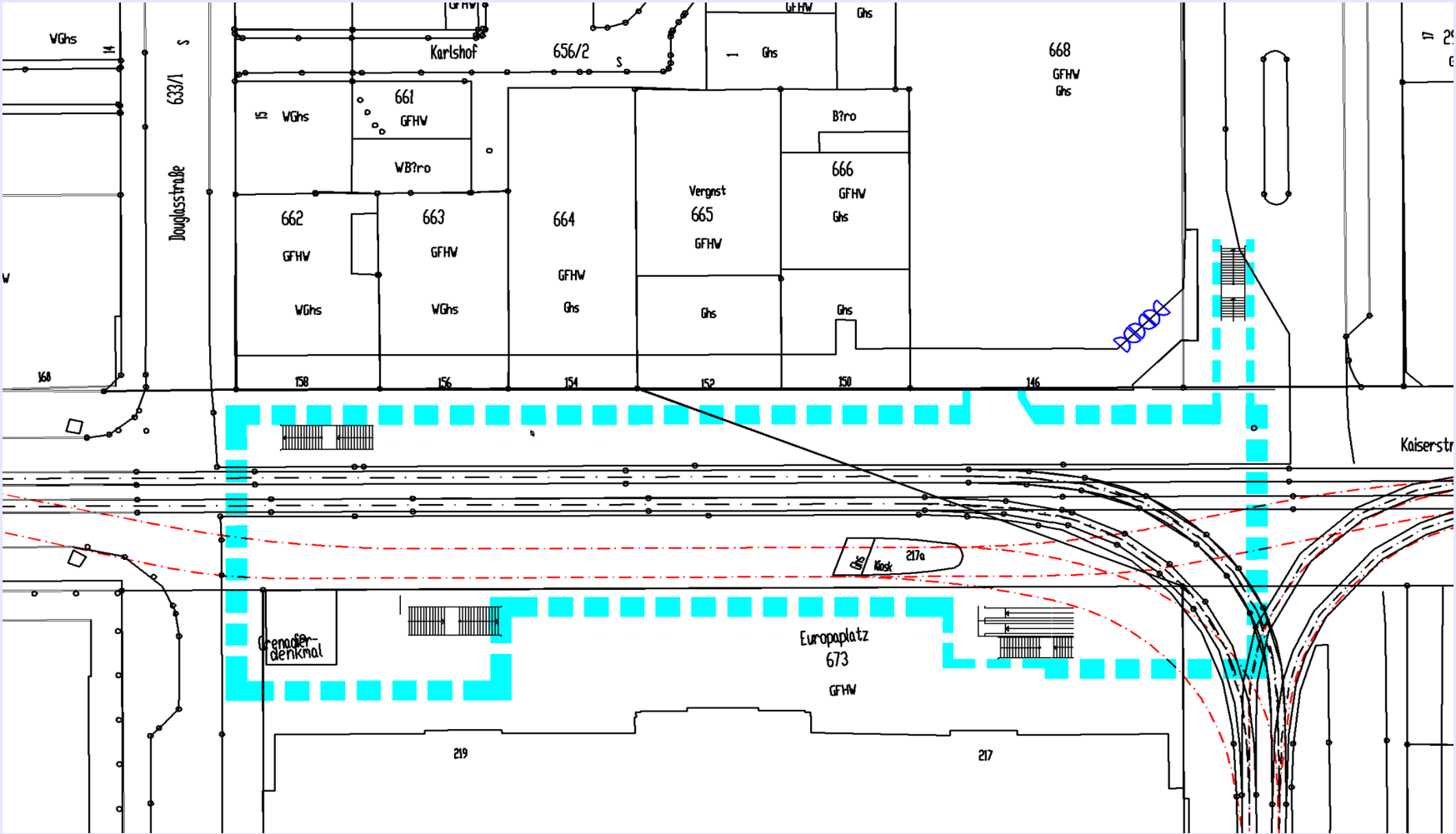
**Notes:**

- Faktor: 0 oder 1 linearer Verlauf
- 0 < Faktor < 1 progressiver Verlauf
- Faktor > 1 degressiver Verlauf
- S ergibt einen S-förmigen Kurvenverlauf

# Second example: a more sophisticated approach, create and calculate a cash outflow plan for a project

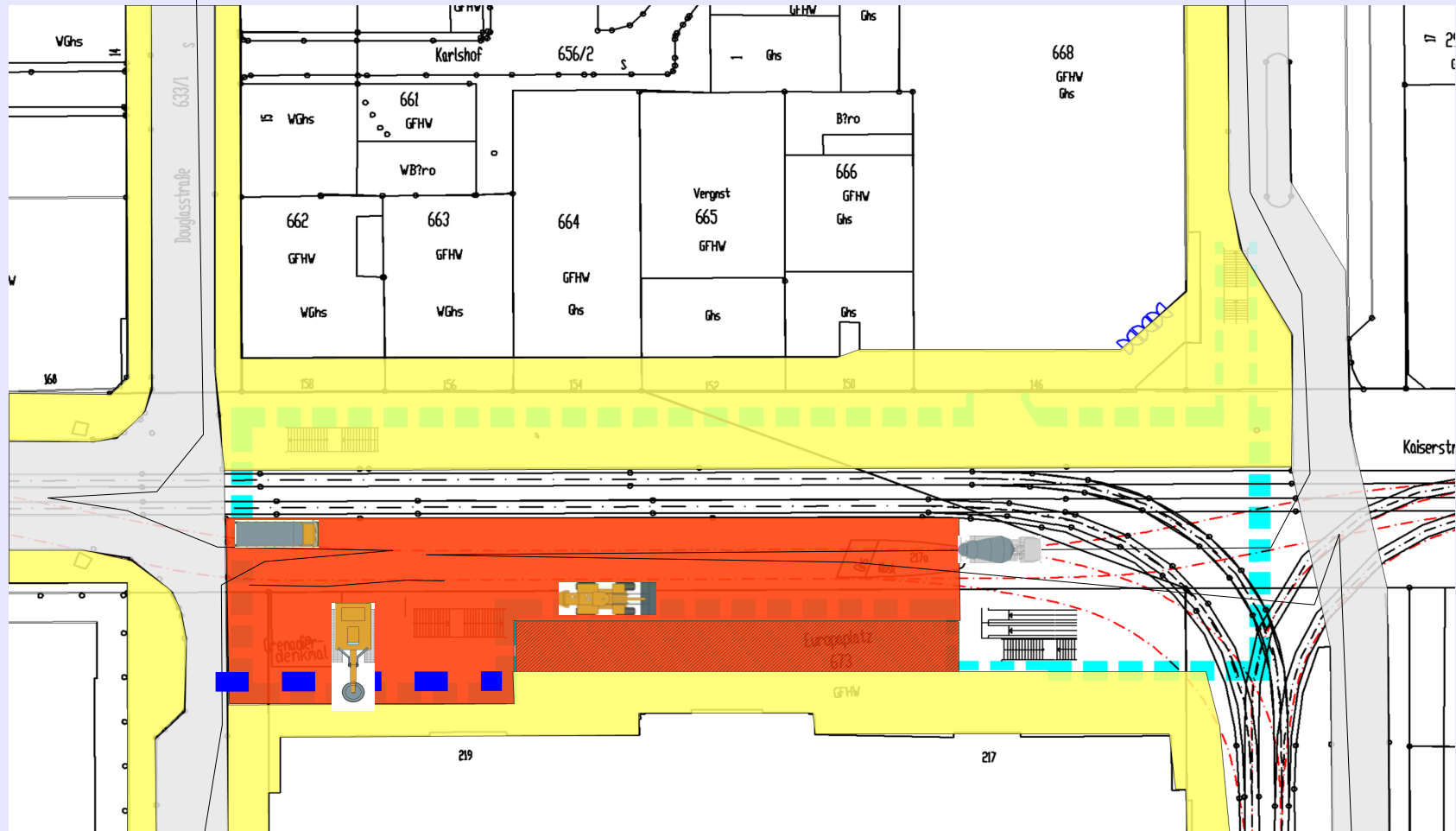


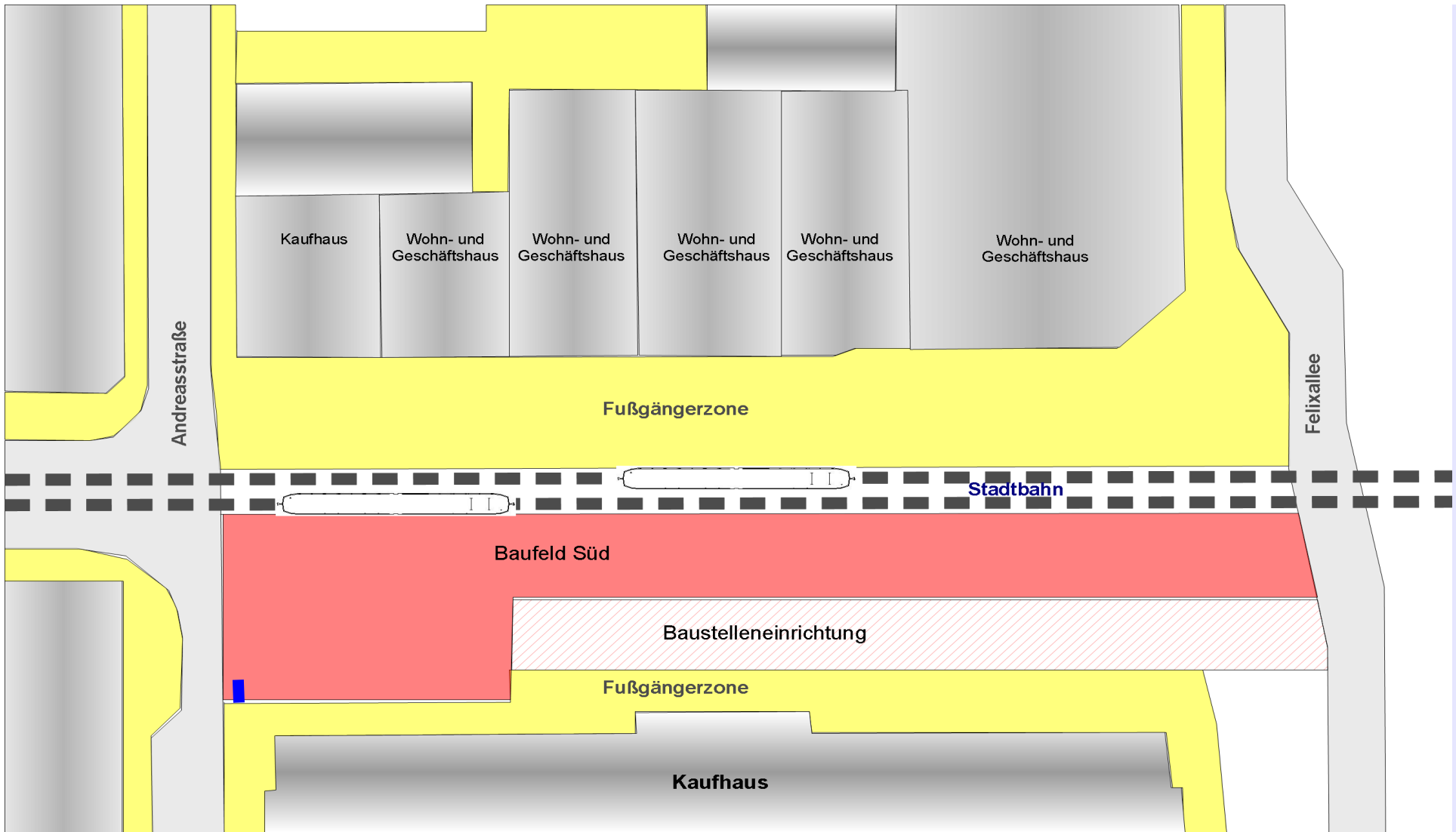
# Third example: visualizing a construction site with AOO Draw





# Third example: visualizing a construction site with AOO Draw





Animation