



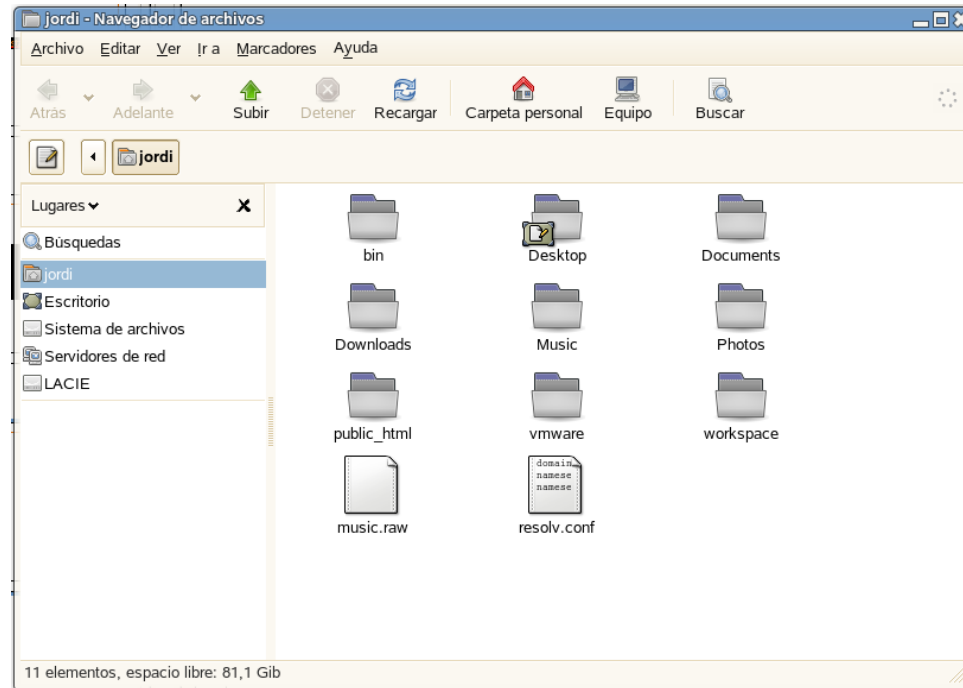
Install linux from windows

The past: Linux was used from a text console



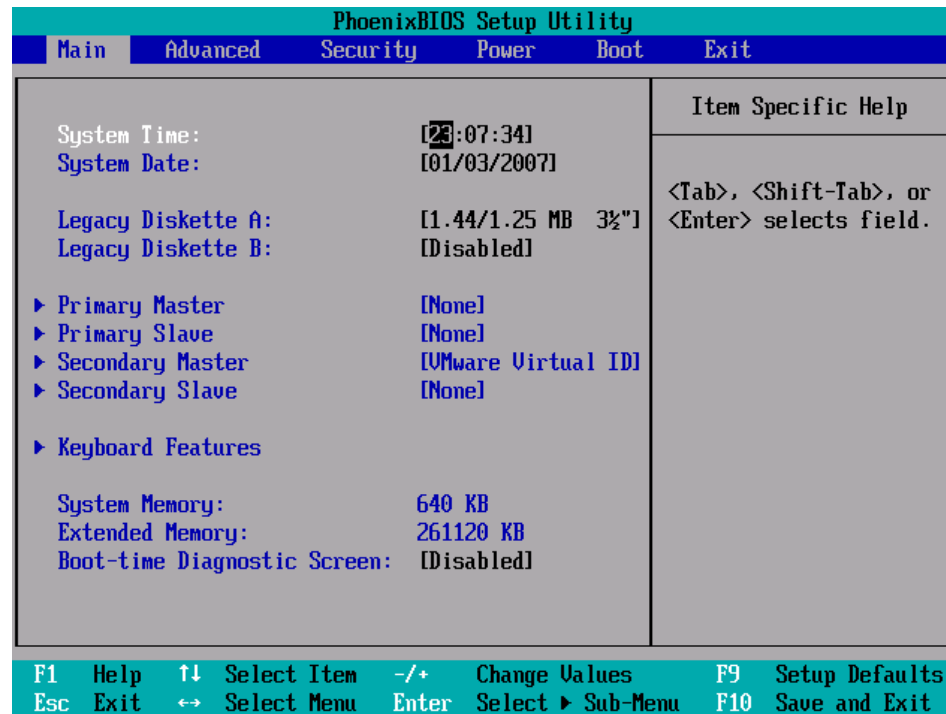
At the beginning, linux was used from a text console. All the interaction had to be done typing commands that had to be remembered. That was a difficult task for non technical users and make them feel uncomfortable and scared.

The present: Linux can be used from a graphical interface



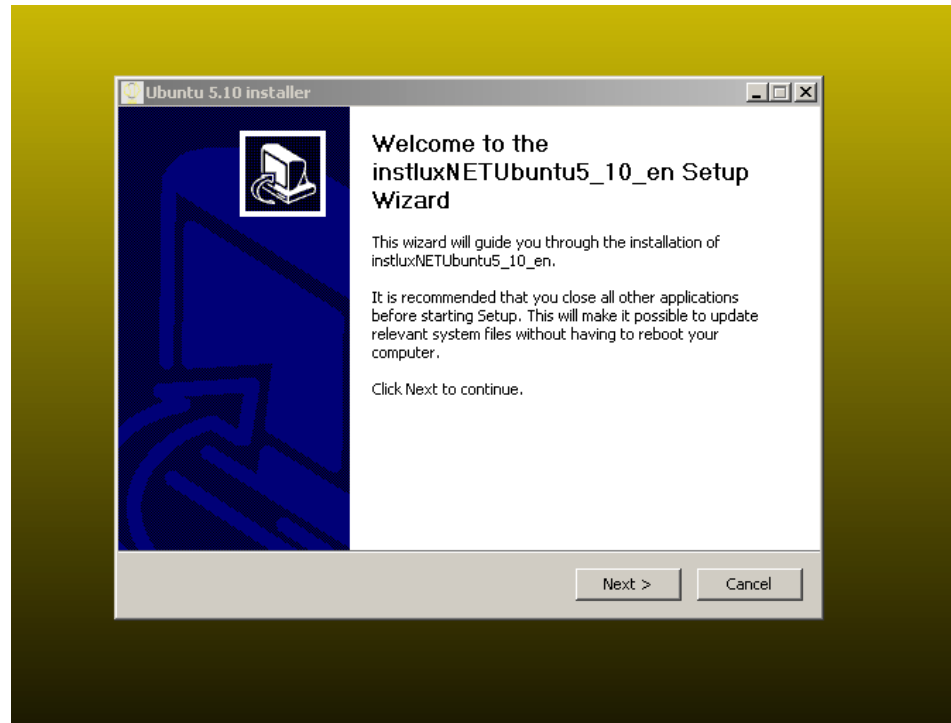
Actually, almost anything can be done from the graphical interface. From writing a document, to configuring an NFS server. That makes Linux more usable. So, non technical users are not scared anymore about using Linux.

The past: BIOS configuration was needed in order to install linux



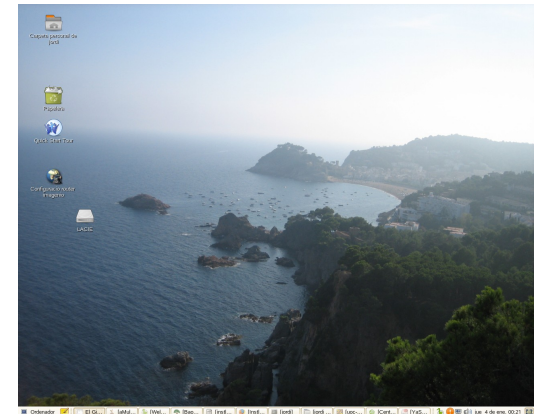
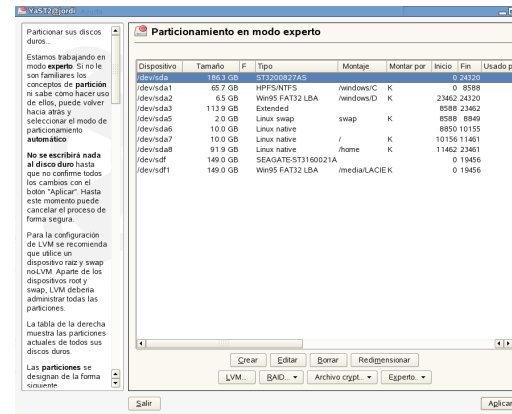
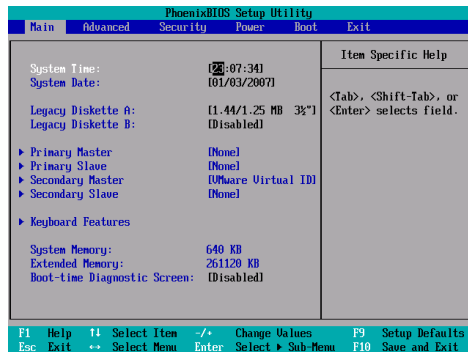
In order to install a Linux system, the BIOS needed to be configured, so that the system could boot using the DVD. That was a scaring step for non technical users. Specially for those who already had a Windows system installed.

The present: Click Next and install Linux



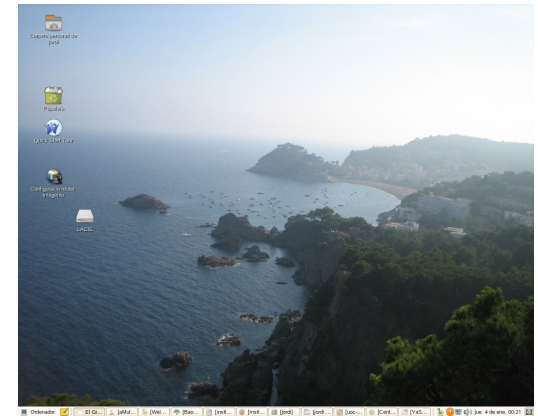
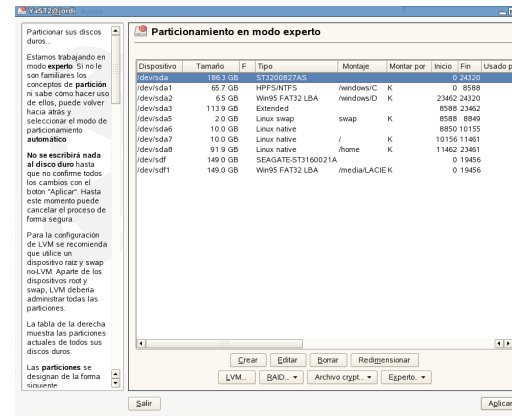
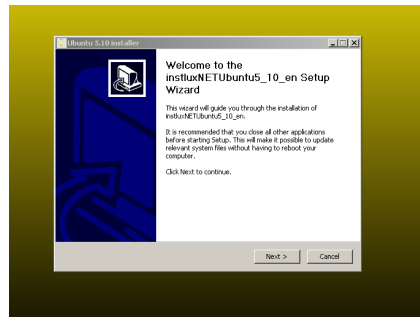
Now, there is a graphical installer that runs on Windows that starts the installation process, without configuring the BIOS. So, a non technical user that already has Windows, can start installing Linux by clicking 'Next' on a nice and not scaring interface. Just like any other Windows application installer. That is instlux.

The installation process without instlux



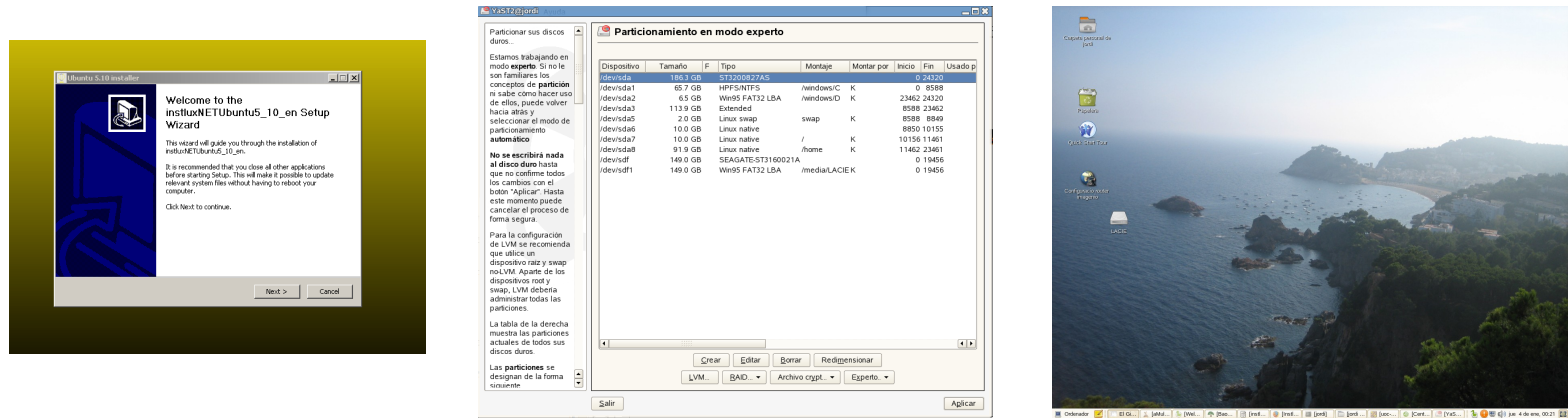
Without instlux, the installation process consisted on getting the DVD (or Cds), configuring the BIOS and installing Linux.

The installation process with instlux



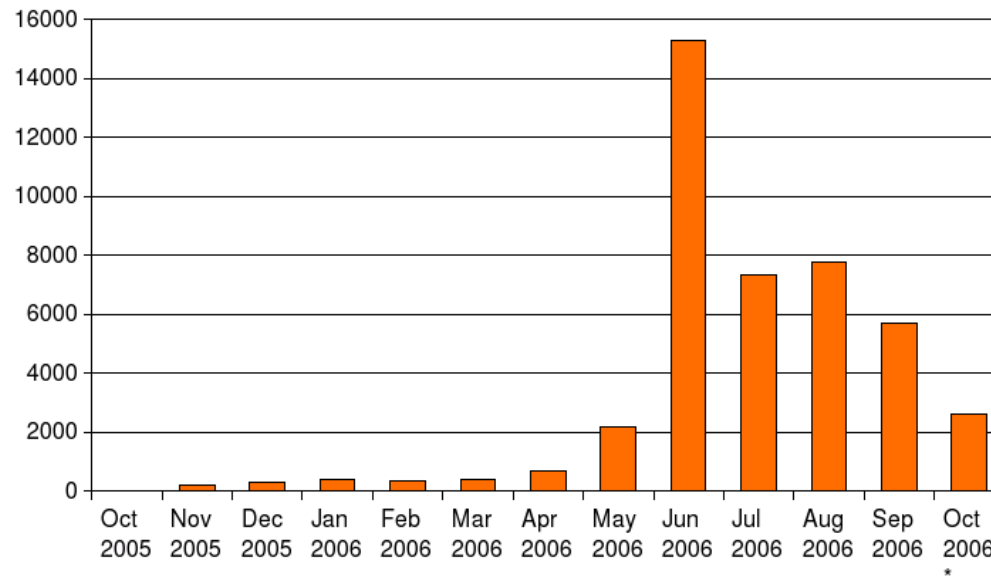
With instlux, the process is simplified. Once you have the DVD (or Cds), you start Windows and run an exe file. No BIOS configuration at all. Then, the installation starts as it used to.

The installation process with instlux (net install)



Instlux can be used without any DVD (or Cds) at all, but downloading the sources from the internet. Just run the exe file from you windows, and the Linux network installer will start.

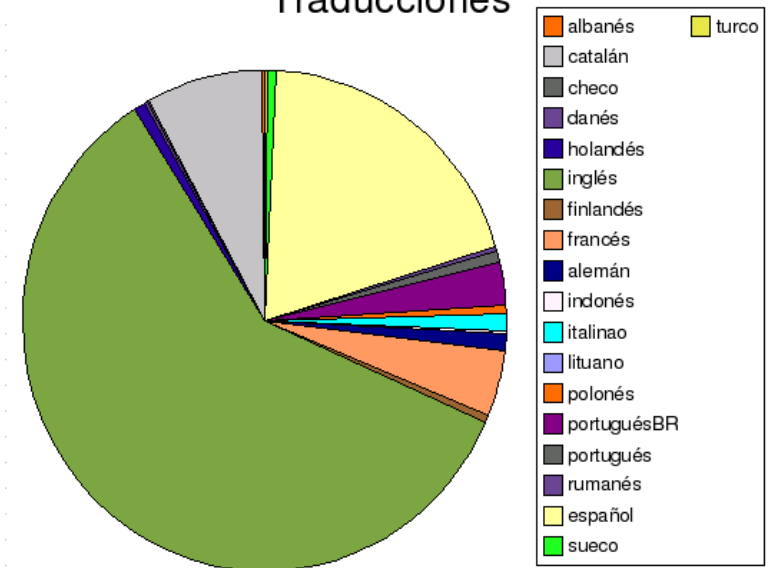
Descargas



40.000 downloads in one year

Translated to 20 languages

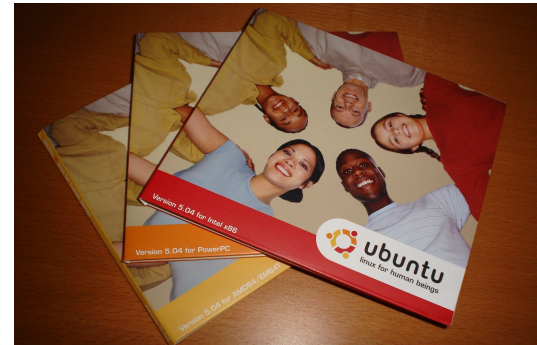
Traducciones



Supported distributions



OpenSuSE



Ubuntu

OpenSuSE and Ubuntu are the two distributions supported by instlux.

<http://instlux.sourceforge.net>